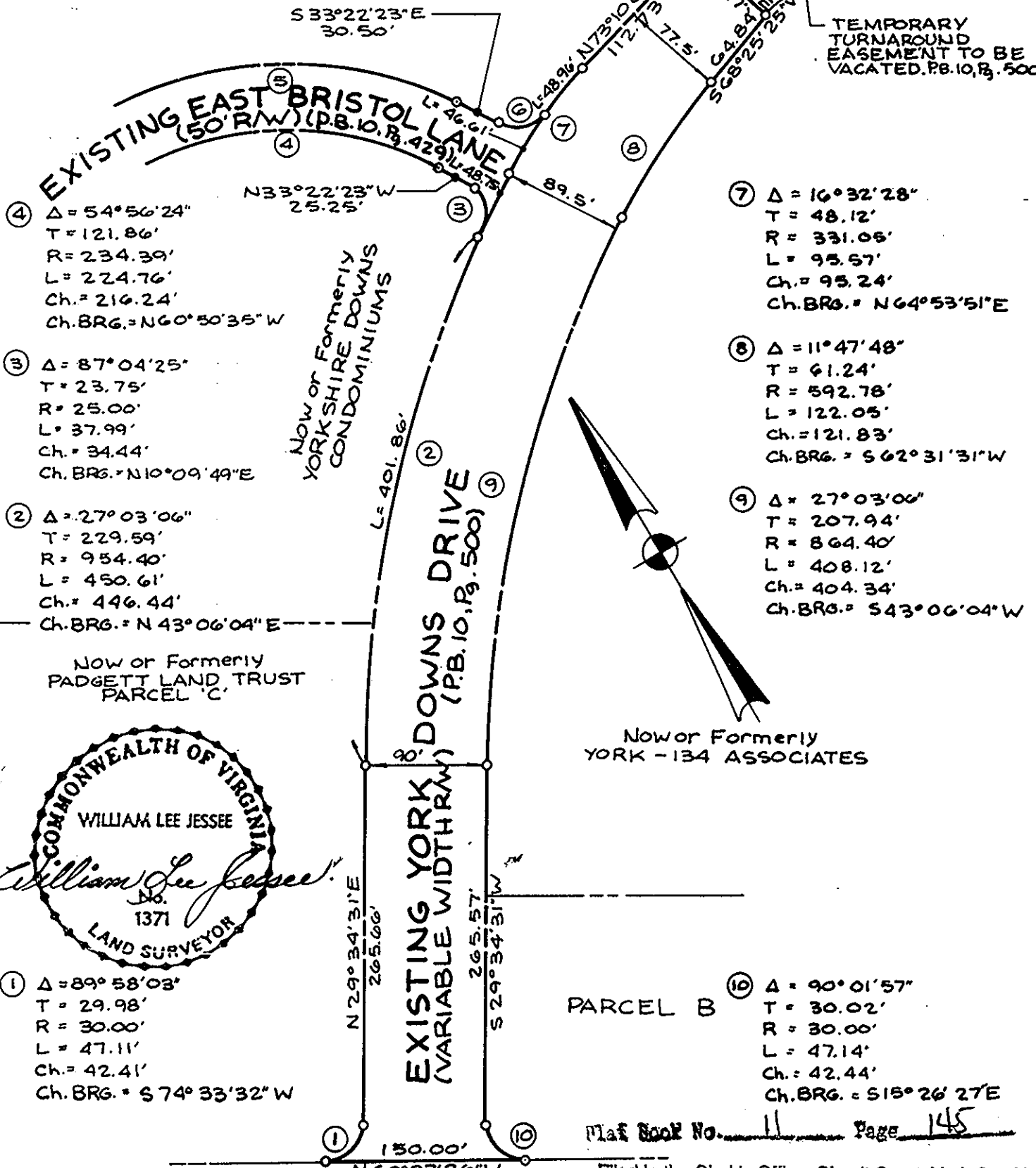


⑤  $\Delta = 54^{\circ}56'24''$   
 $T = 147.86'$   
 $R = 284.39'$   
 $L = 272.70'$   
 $Ch. = 262.37'$   
 $Ch. BRG. = S60^{\circ}50'35'' E$

⑥  $\Delta = 81^{\circ}55'38''$   
 $T = 21.70'$   
 $R = 25.00'$   
 $L = 35.75'$   
 $Ch. = 32.78'$   
 $Ch. BRG. = S74^{\circ}20'12'' E$

TEMPORARY  
 TURNAROUND  
 EASEMENT TO BE  
 VACATED. P.B. 10, P. 500



④  $\Delta = 54^{\circ}56'24''$   
 $T = 121.86'$   
 $R = 234.39'$   
 $L = 224.76'$   
 $Ch. = 216.24'$   
 $Ch. BRG. = N60^{\circ}50'35'' W$

③  $\Delta = 87^{\circ}04'25''$   
 $T = 23.75'$   
 $R = 25.00'$   
 $L = 37.99'$   
 $Ch. = 34.44'$   
 $Ch. BRG. = N10^{\circ}09'49'' E$

②  $\Delta = 27^{\circ}03'06''$   
 $T = 229.59'$   
 $R = 954.40'$   
 $L = 450.61'$   
 $Ch. = 446.44'$   
 $Ch. BRG. = N43^{\circ}06'04'' E$

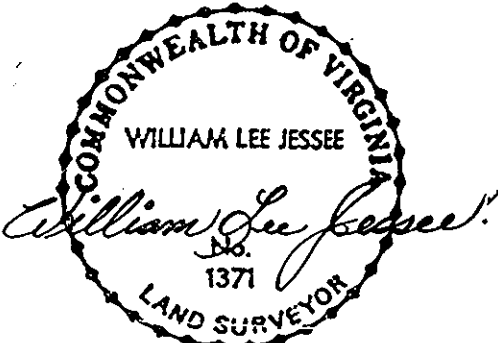
⑦  $\Delta = 16^{\circ}32'28''$   
 $T = 48.12'$   
 $R = 331.05'$   
 $L = 95.57'$   
 $Ch. = 95.24'$   
 $Ch. BRG. = N64^{\circ}53'51'' E$

⑧  $\Delta = 11^{\circ}47'48''$   
 $T = 61.24'$   
 $R = 592.78'$   
 $L = 122.05'$   
 $Ch. = 121.83'$   
 $Ch. BRG. = S62^{\circ}31'31'' W$

⑨  $\Delta = 27^{\circ}03'06''$   
 $T = 207.94'$   
 $R = 864.40'$   
 $L = 408.12'$   
 $Ch. = 404.34'$   
 $Ch. BRG. = S43^{\circ}06'04'' W$

①  $\Delta = 89^{\circ}58'03''$   
 $T = 29.98'$   
 $R = 30.00'$   
 $L = 47.11'$   
 $Ch. = 42.41'$   
 $Ch. BRG. = S74^{\circ}33'32'' W$

⑩  $\Delta = 90^{\circ}01'57''$   
 $T = 30.02'$   
 $R = 30.00'$   
 $L = 47.14'$   
 $Ch. = 42.44'$   
 $Ch. BRG. = S15^{\circ}26'27'' E$



STATE ROUTE 134

NOTE: MINIMUM RIGHT-OF-WAY WIDTH FOR YORK DOWNS DRIVE IS 60\'.

Filed in the Clerk's Office, Circuit Court, York Co., Va. the 13th day of December 1989 3:35 P.M.

Teste: Nancy B. Kane, Clerk  
 Karen D. Kalkreuth

**Talbot & Associates, Ltd.**

EXHIBIT SHOWING  
 YORK DOWNS DRIVE  
 AND  
 EAST BRISTOL LANE  
 LOCATED IN  
 YORK COUNTY, VIRGINIA