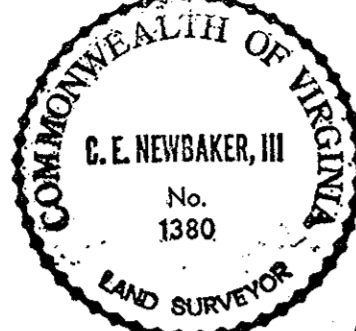


THE UNDERSIGNED CERTIFIES THAT THIS PLAN IS ACCURATE AND COMPLIES WITH THE PROVISIONS OF THE CODE OF VIRGINIA SECTION 55-79.58 (b) AND ALL UNITS DEPICTED HEREON HAVE BEEN SUBSTANTIALLY COMPLETED.

SIGNED: *C. E. Newbaker III* DATE: 4-16-90  
 C. E. NEWBAKER III, L.S.

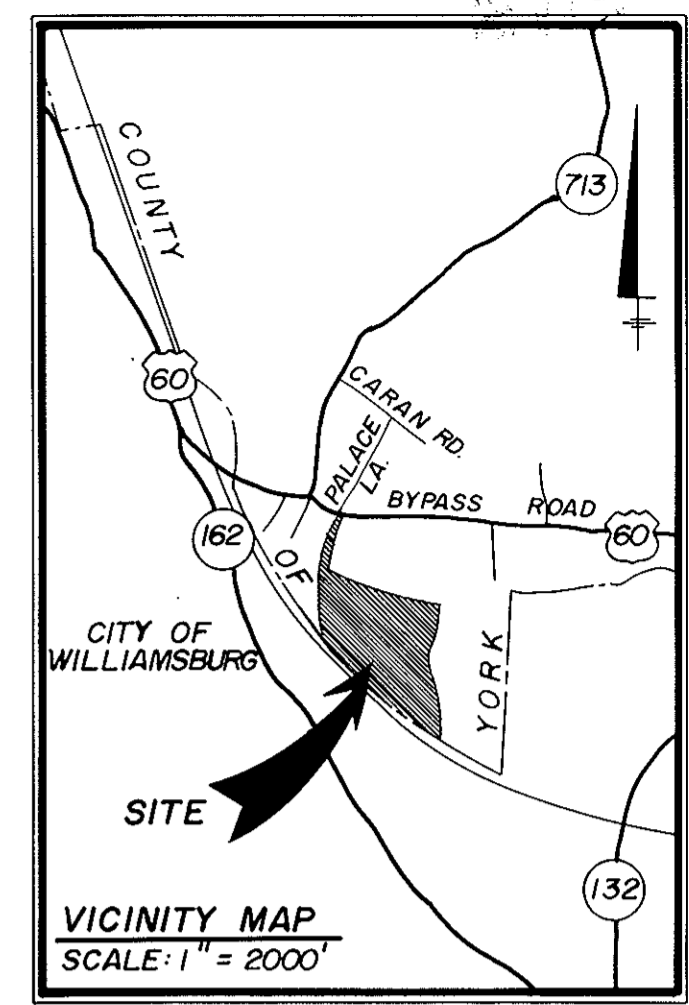


NOTES:  
 I. ALL BUILDING DIMENSIONS SHOWN HEREON ARE EXTERIOR DIMENSIONS AND ARE IN FEET  
 PARCEL B = 17.630 ACRES

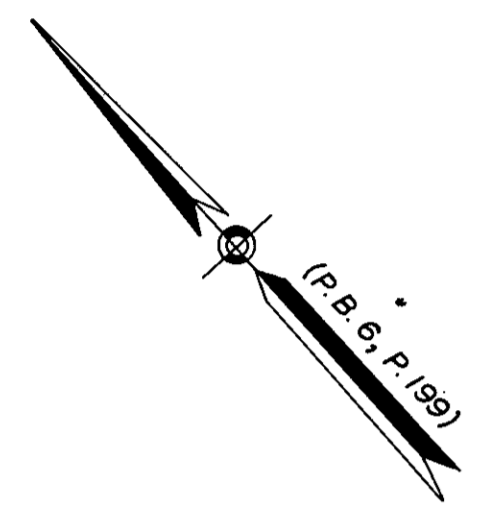
STATE OF VIRGINIA  
 COUNTY OF YORK

IN THE CLERK'S OFFICE OF THE CIRCUIT COURT FOR THE COUNTY OF YORK THE 25th DAY OF May, 1990 THIS MAP WAS PRESENTED AND ADMITTED TO RECORD AS THE LAW DIRECTS IN PLAT BOOK 11, PAGE 205

TESTE: NANCY B. KANE, CLERK  
 BY: *Kenneth D. Keenan, Jr.*



CURVE DATA TABLE				
NO.	RADIUS	DELTA	TANGENT	ARC
1	5565.65'	04° 31' 35"	219.96'	439.69'
2	1067.62'	12° 33' 39"	117.50'	234.05'
3	583.76'	34° 45' 06"	182.67'	354.07'
4	683.76'	18° 06' 16"	108.94'	216.06'
5	683.76'	16° 38' 48"	100.03'	198.67'
6	1167.62'	12° 33' 39"	128.50'	255.97'
7	5665.65'	04° 38' 30"	229.62'	459.00'
8	5665.65'	04° 53' 06"	241.67'	483.04'
9	583.76'	22° 51' 55"	118.05'	232.97'
10	583.76'	11° 53' 11"	60.77'	121.11'
11	1067.62'	05° 32' 25"	51.66'	103.23'
12	1067.62'	07° 01' 14"	65.49'	130.82'
13	5565.65'	00° 55' 36"	45.00'	90.00'



U.S. ROUTE 60 BYPASS ROAD  
 (VARIABLE WIDTH)

RECORDED IN THE COUNTY CLERK'S OFFICE OF YORK COUNTY, VIRGINIA, ON MAY 25, 1990.  
 BY: *S. Mark Carter*

PARCEL C (P.B. 10, P. 334)  
 REMAINING PORTION OF PARCEL B "CONVERTIBLE AND WITHDRAWABLE LAND"

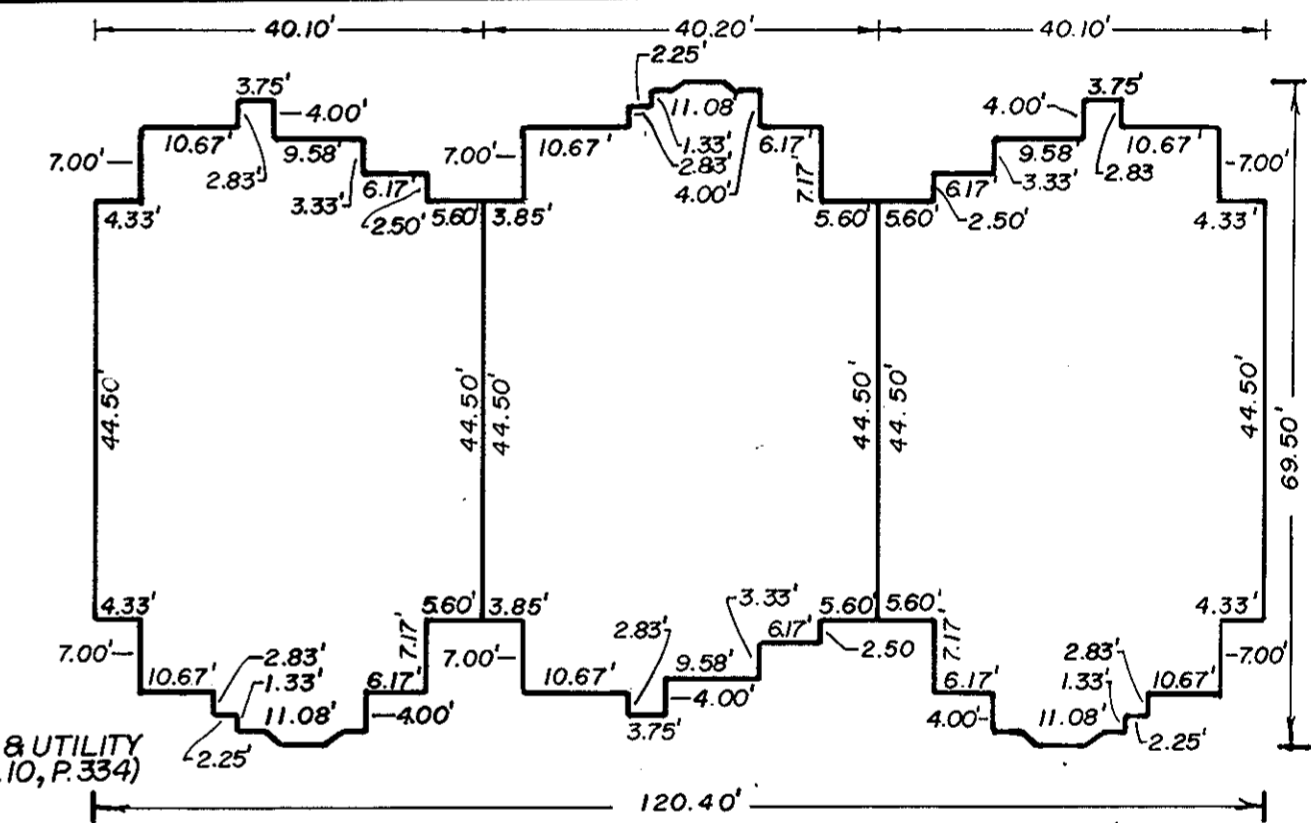
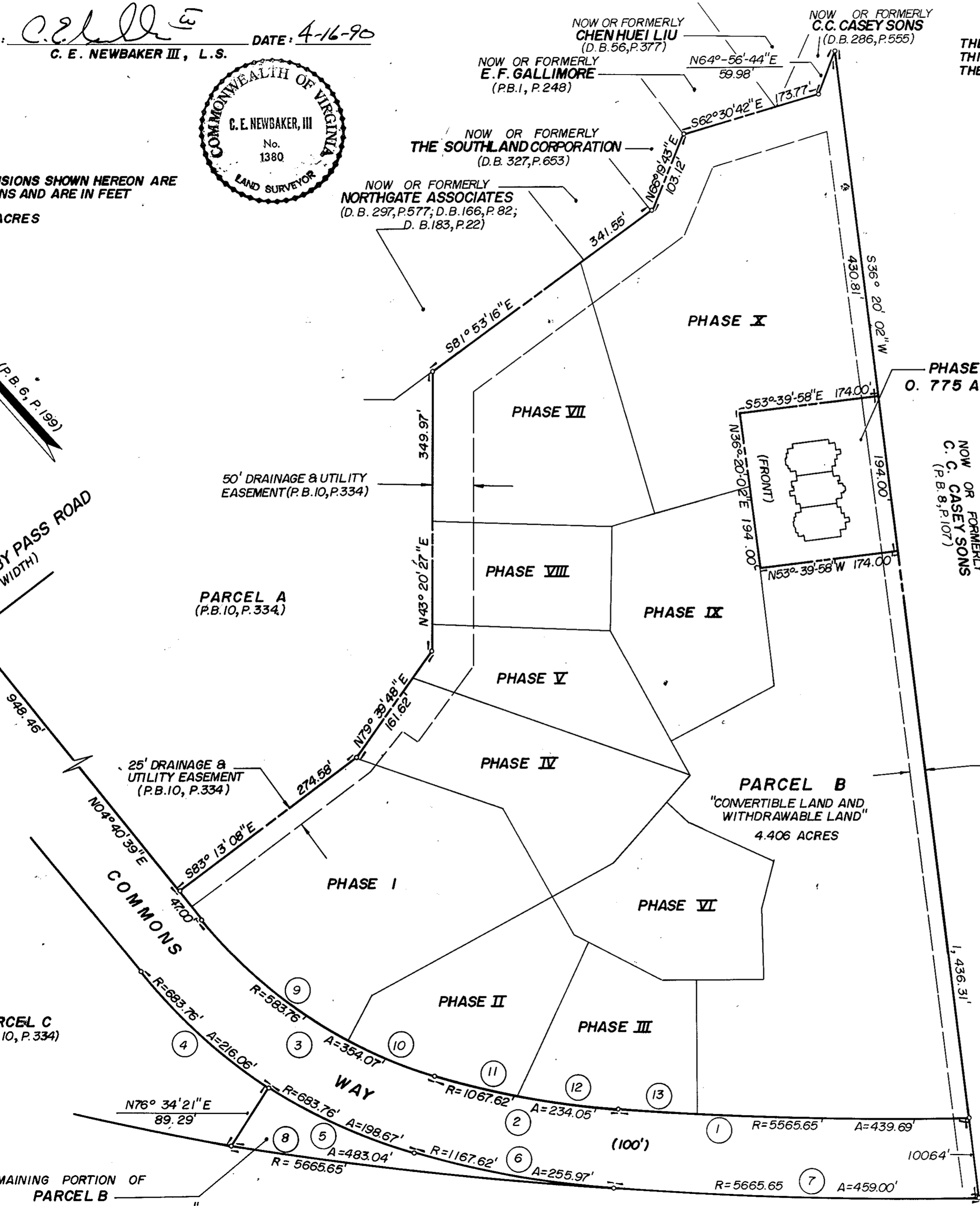


EXHIBIT L  
 PHASE XII  
 SHEET I OF 4  
 PLAT OF  
 WILLIAMSBURG COMMONS CONDOMINIUMS  
 FOR  
 WILLIAMSBURG COMMONS, INC.  
 A VIRGINIA CORPORATION  
 BRUTON DISTRICT COUNTY OF YORK, VIRGINIA  
 SCALE: 1" = 100' APRIL 4, 1990



THE SIRINE GROUP, LTD.  
 SURVEYORS • ENGINEERS • PLANNERS  
 P.O. BOX 450, ROUTE 17  
 WHITE MARSH, VIRGINIA  
 23183

CHESAPEAKE AND OHIO RAILROAD