

COBBLE CREEK

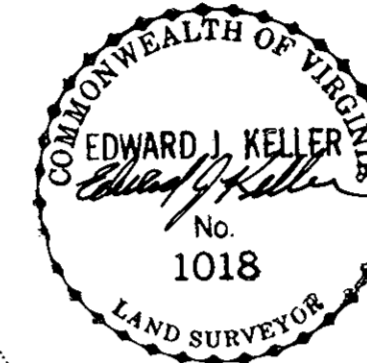
SECTION TWO

COUNTY OF YORK, VIRGINIA

SCALE: 1" = 100' DATE: APRIL 6, 1990

SHEET 1 OF 2

KELLER, LEWIS AND ASSOCIATES, P. C.
LAND SURVEYORS AND PLANNERS
740 THIMBLE SHOALS BOULEVARD, NEWPORT NEWS, VA.



LOT AREA = 25.2924 ACRES

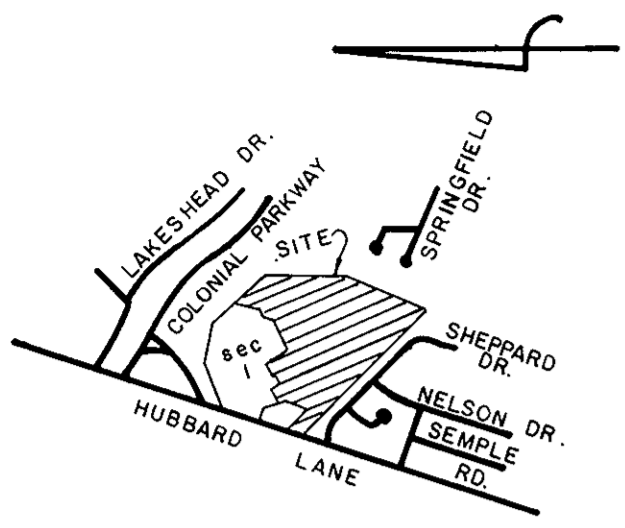
R/W AREA = 2.4292 ACRES

TOTAL AREA = 27.7216 ACRES

PROPOSED VARIABLE WIDTH DRAINAGE & UTILITY EASEMENT TO BE CONVEYED TO YORK COUNTY

EXISTING YORK COUNTY 20' DRAINAGE & UTILITY EASEMENT P.B. 10 PG. 533

VICINITY MAP
SCALE: 1" = 2000'



APPROVED:

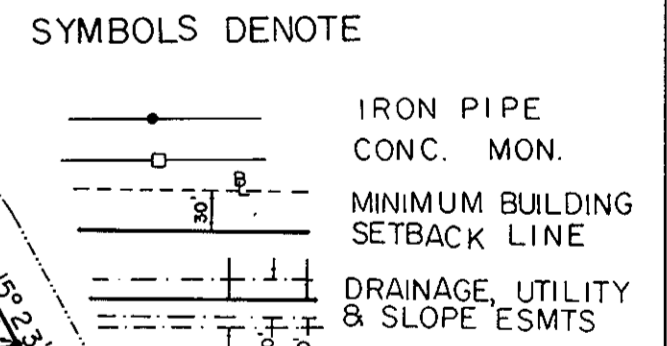
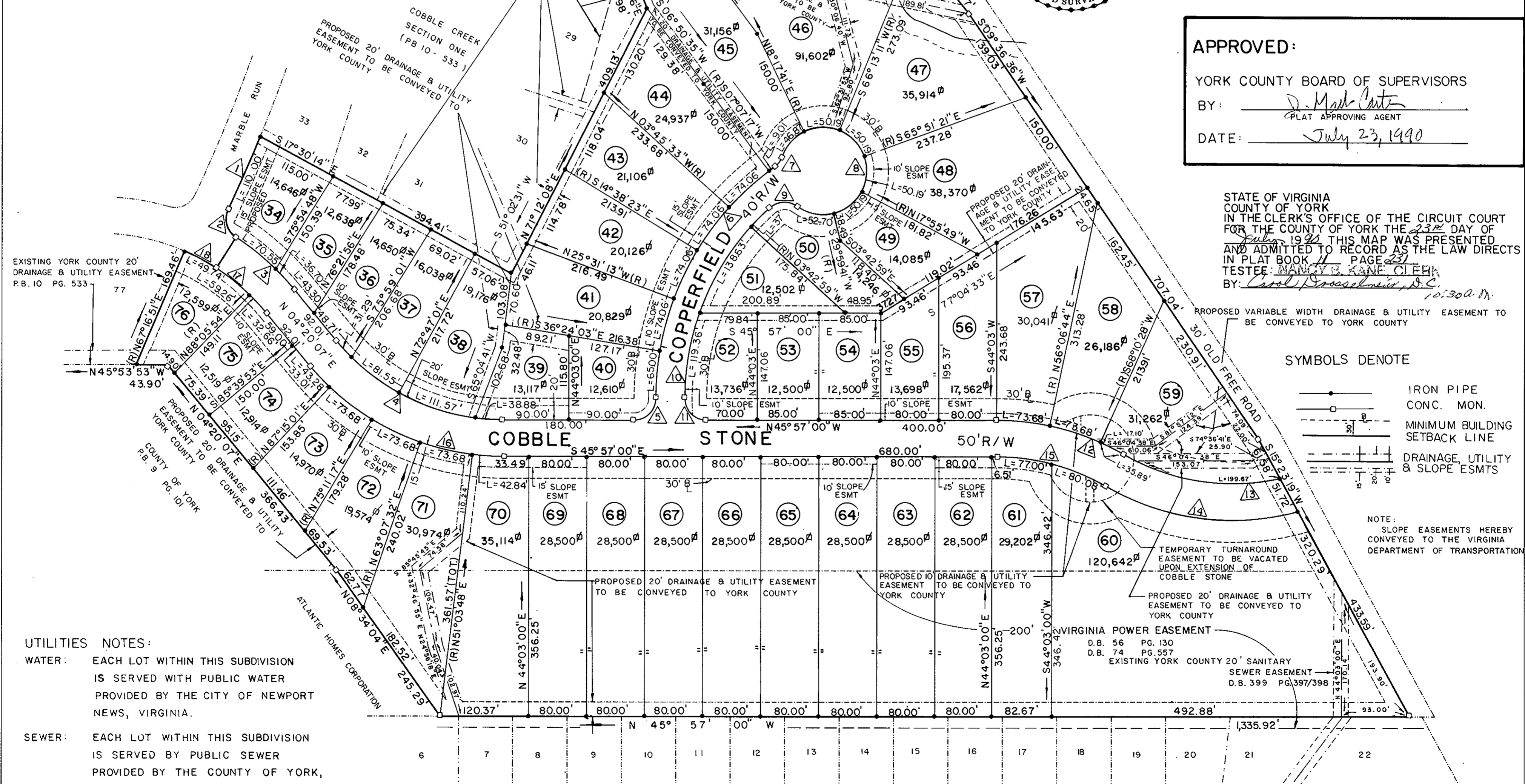
YORK COUNTY BOARD OF SUPERVISORS

BY: *J. Mark Carter*
PLAT APPROVING AGENT

DATE: *July 23, 1990*

STATE OF VIRGINIA
COUNTY OF YORK
IN THE CLERK'S OFFICE OF THE CIRCUIT COURT
FOR THE COUNTY OF YORK THE *23rd* DAY OF
July 19 *90* THIS MAP WAS PRESENTED
AND ADMITTED TO RECORD AS THE LAW DIRECTS
IN PLAT BOOK *11* PAGE *231*
TESTEE: *NANCY KANE CLERK*
BY: *Cecil Grosselund, P.E.*

EXISTING YORK COUNTY 20' DRAINAGE & UTILITY EASEMENT P.B. 10 PG. 533



NOTE: SLOPE EASEMENTS HEREBY CONVEYED TO THE VIRGINIA DEPARTMENT OF TRANSPORTATION

UTILITIES NOTES:
WATER: EACH LOT WITHIN THIS SUBDIVISION IS SERVED WITH PUBLIC WATER PROVIDED BY THE CITY OF NEWPORT NEWS, VIRGINIA.
SEWER: EACH LOT WITHIN THIS SUBDIVISION IS SERVED BY PUBLIC SEWER PROVIDED BY THE COUNTY OF YORK, VIRGINIA.