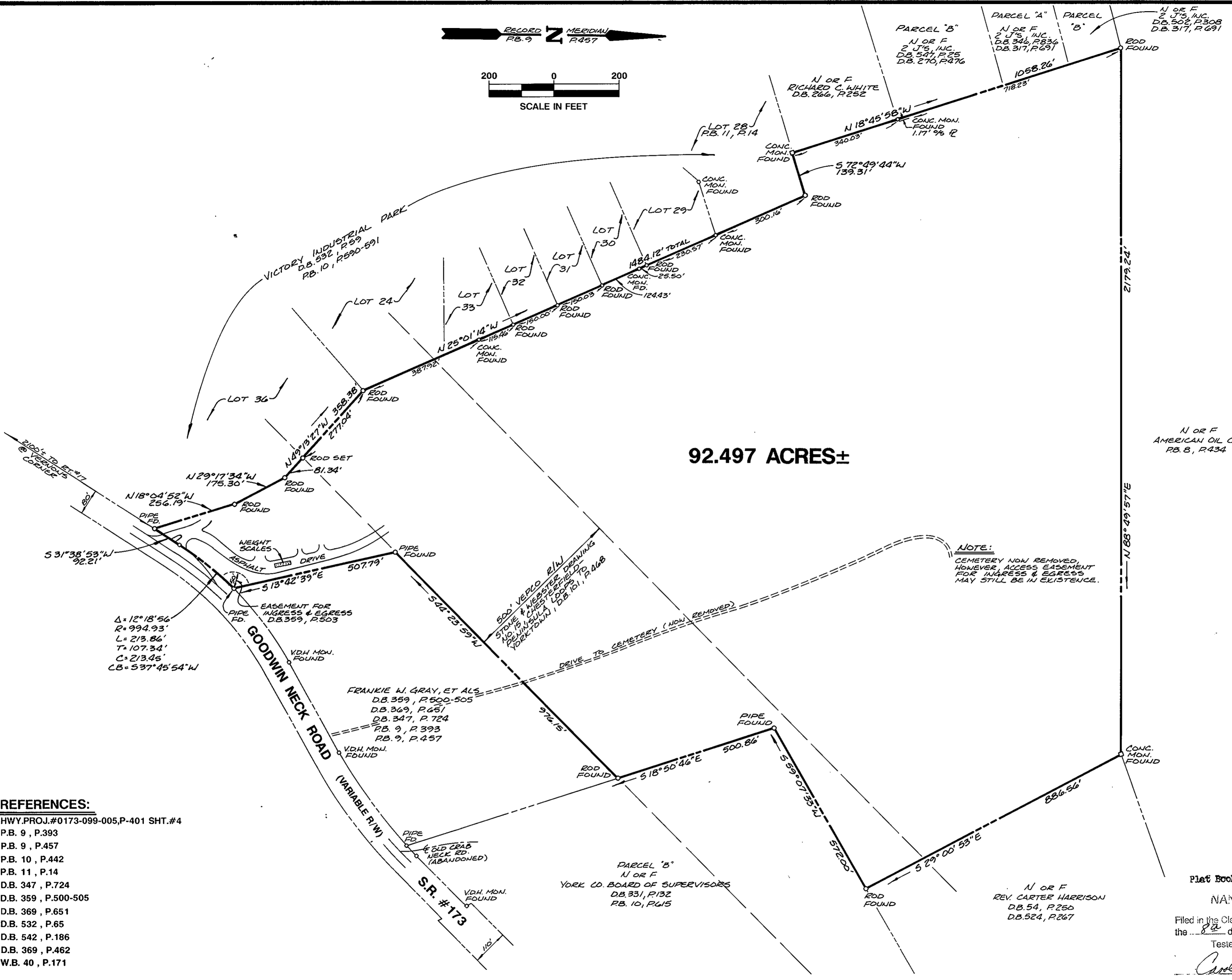
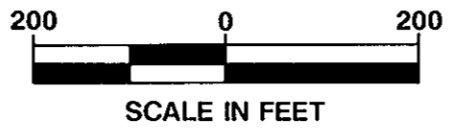


RECORD MERIDIAN  
R.B. 9 R.157



**NOTE:**  
CEMETERY NOW REMOVED, HOWEVER, ACCESS EASEMENT FOR INGRESS & EGRESS MAY STILL BE IN EXISTENCE.

- REFERENCES:**
- HWY.PROJ.#0173-099-005,P-401 SHT.#4
  - P.B. 9, P.393
  - P.B. 9, P.457
  - P.B. 10, P.442
  - P.B. 11, P.14
  - D.B. 347, P.724
  - D.B. 359, P.500-505
  - D.B. 369, P.651
  - D.B. 532, P.65
  - D.B. 542, P.186
  - D.B. 369, P.462
  - W.B. 40, P.171

Plat Book No. 11 Page 257

**NANCY B. KANE, CLERK**

Filed in the Clerk's Office, Circuit Court, York Co., Va.  
the 8<sup>th</sup> day of November, 1990

Teste:  
Nancy B. Kane, Clerk  
*Carol Drosselmer*



**AES, a professional corporation**  
5248 Olde Towne Road, Suite 1  
Williamsburg, Virginia 23185  
(804) 253-0040  
Engineering, Planning, Surveying

**PLAT OF SURVEY**  
OF  
**92.497 ACRES±**  
OWNED BY THE COUNTY OF YORK

NELSON DISTRICT YORK COUNTY VIRGINIA



No.	DATE	REVISION / COMMENT / NOTE	BY
1	10/29/90	REV'D. BOUNDARY @ RT.#171	

Designed AES	Drawn RWE
Scale 1" = 200'	Date 10/10/90
Project No. <b>6204-12</b>	
Drawing No. <b>PLAT</b>	