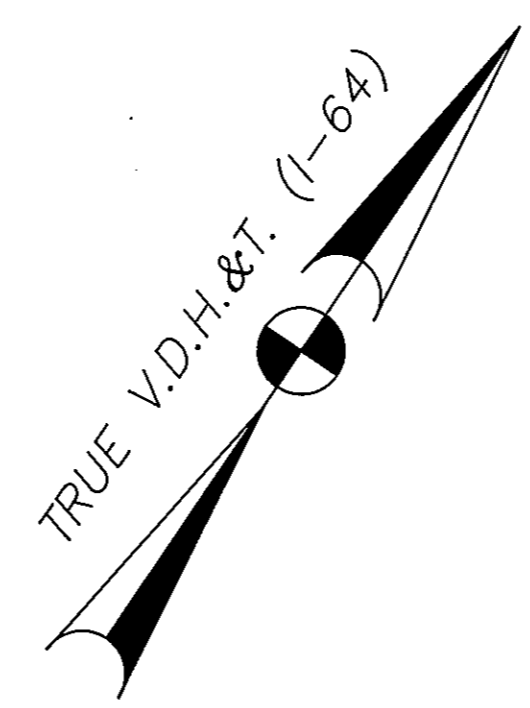


**SUBDIVISION 304**  
 OF THE PROPERTY OF  
 VILLAGES OF KILN CREEK  
 LIMITED PARTNERSHIP  
 VILLAGES OF  
 KILN CREEK GOLF COURSE  
 SHOWING  
**PARCELS D AND E**  
 YORK COUNTY, VIRGINIA

**Talbot & Associates, Ltd.**  
 Virginia Beach, Va. • Newport News, Va. • Suffolk, Va.  
 Phone: (804) 873-1139

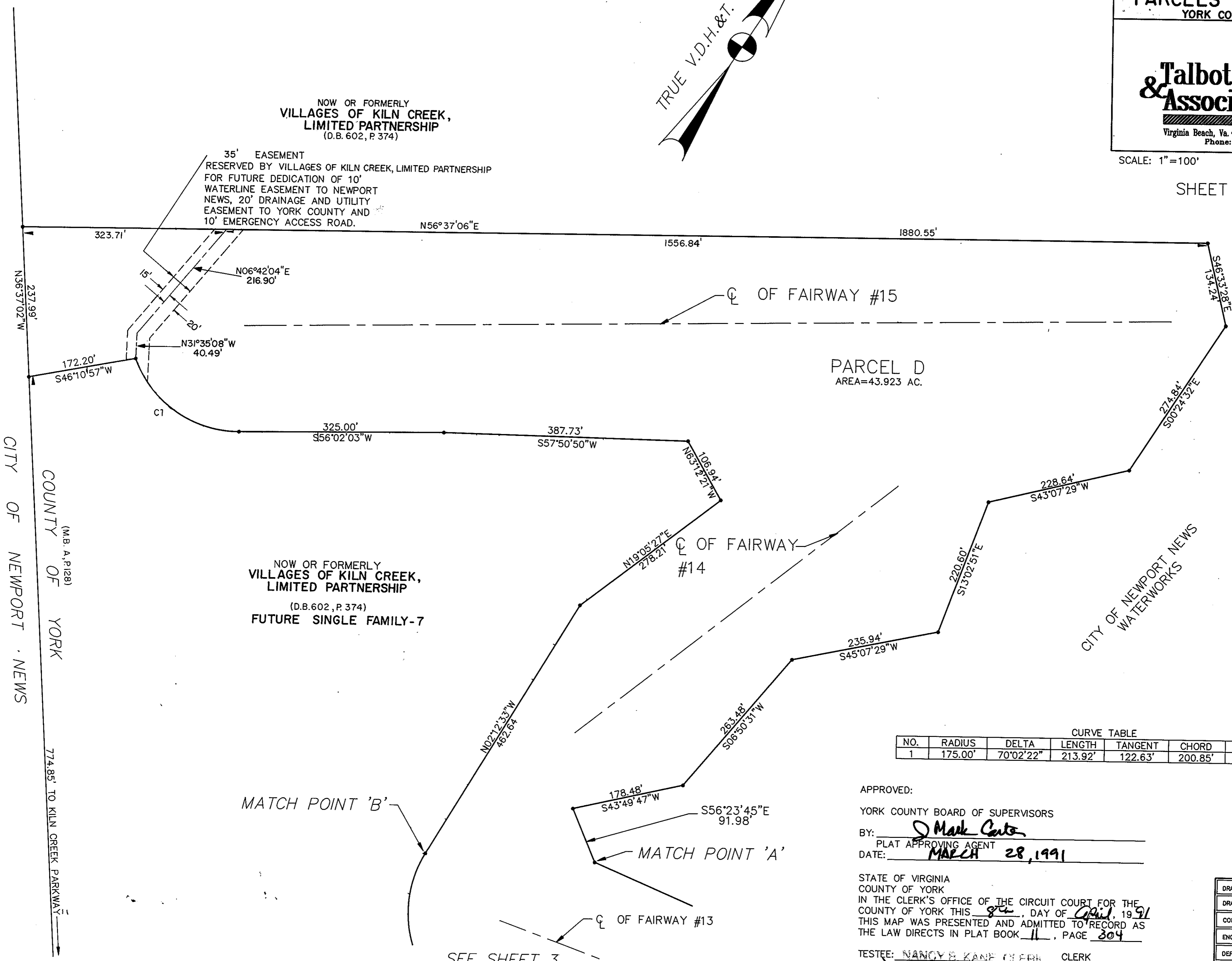
SCALE: 1"=100' DATE: 10-12-90  
 REV: 3-11-91

SHEET 2 OF 6



NOW OR FORMERLY  
**VILLAGES OF KILN CREEK,  
 LIMITED PARTNERSHIP**  
 (D.B. 602, P. 374)

35' EASEMENT  
 RESERVED BY VILLAGES OF KILN CREEK, LIMITED PARTNERSHIP  
 FOR FUTURE DEDICATION OF 10'  
 WATERLINE EASEMENT TO NEWPORT  
 NEWS, 20' DRAINAGE AND UTILITY  
 EASEMENT TO YORK COUNTY AND  
 10' EMERGENCY ACCESS ROAD.



CITY OF NEWPORT NEWS  
 COUNTY OF YORK  
 (M.B. A.P.128)  
 774.85' TO KILN CREEK PARKWAY

NOW OR FORMERLY  
**VILLAGES OF KILN CREEK,  
 LIMITED PARTNERSHIP**  
 (D.B. 602, P. 374)  
**FUTURE SINGLE FAMILY-7**

**PARCEL D**  
 AREA=43.923 AC.

CURVE TABLE

NO.	RADIUS	DELTA	LENGTH	TANGENT	CHORD	CH. BEARING
1	175.00'	70°02'22"	213.92'	122.63'	200.85'	N88°56'46"W

APPROVED:  
 YORK COUNTY BOARD OF SUPERVISORS  
 BY: J. Mark Carter  
 PLAT APPROVING AGENT  
 DATE: MARCH 28, 1991

STATE OF VIRGINIA  
 COUNTY OF YORK  
 IN THE CLERK'S OFFICE OF THE CIRCUIT COURT FOR THE  
 COUNTY OF YORK THIS 8th DAY OF April, 1991  
 THIS MAP WAS PRESENTED AND ADMITTED TO RECORD AS  
 THE LAW DIRECTS IN PLAT BOOK 11, PAGE 304

TESTEE: NANCY B. KANE CLERK  
 BY: Nancy S. Benyon

MATCH POINT 'B'

MATCH POINT 'A'

SEE SHEET 3

DRAWN BY:	<u>K.B.B.</u>	DATE:	<u>10-12-90</u>
DRAFT CHK:	<u>C.A.H.</u>	DATE:	<u>10-12-90</u>
COMP. CHK:	<u>M.T.P.</u>	DATE:	<u>10-17-90</u>
ENG. CHK:		DATE:	
DEPT. HEAD:	<u>W.P.C.</u>	DATE:	
PROJECT NO.:	<u>882211</u>		
SCALE:	<u>1" = 100'</u>		
FILE NO.:	<u>882211</u>		