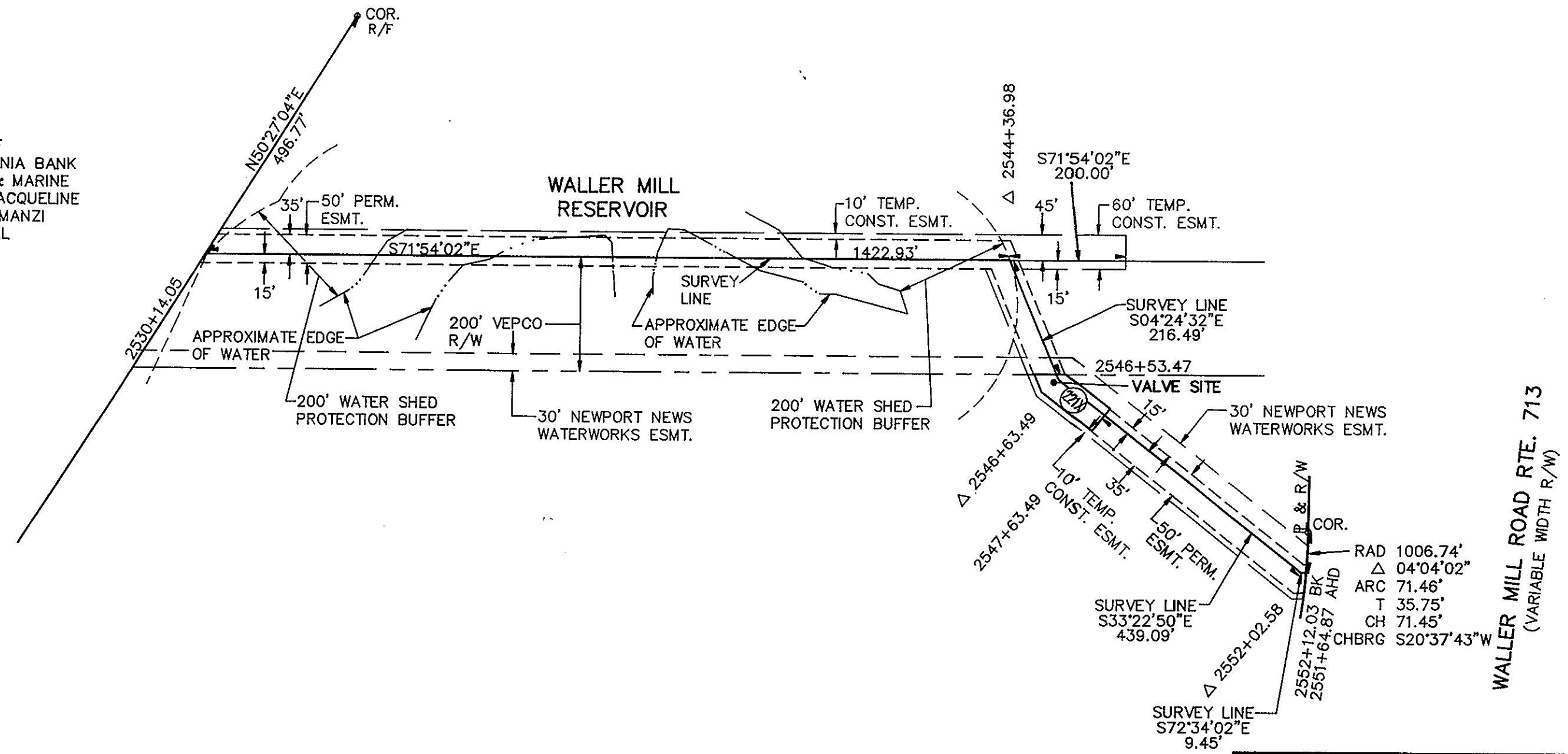


CITY OF WILLIAMSBURG

N/F
UNITED VIRGINIA BANK
/CITIZENS & MARINE
AND MARY JACQUELINE
ROYALS MANZI
ET AL



WALLER MILL ROAD RTE. 713
(VARIABLE WIDTH R/W)

AREA INSIDE VEPCO R/W:
PERM: 0.73 AC.
TEMP: 0.11 AC.

AREA OUTSIDE VEPCO R/W:
PERM: 1.66 AC.
TEMP: 0.66 AC.

Plat Book No. 11 Page 327

Filed in the Clerk's Office, Circuit Court, York Co., Va.
the 21st day of June 19 91

Teste:

Nancy B. Kane, Clerk
Carl Prosser D.C.
3:19 P.M.

MERIDIAN SOURCE: VIRGINIA COORDINATE SYSTEM OF 1927 (SOUTH ZONE)



PLAT TO ACCOMPANY RIGHT-OF-WAY
AGREEMENT WITH

CITY OF WILLIAMSBURG

DISTRICT/TOWNSHIP	COUNTY	STATE
BRUTON	YORK	VA

SURVEYED BY SCHNEIDER ENGINEERS

	6/05/91	5/31/91	5/14/91	3/19/91			
4	REVISED ESMT. RSA	3	ADDED BUFFER AREA RSA	2	REVISED VALVE SITE RSA	1	REVISED ESMT. & P. RSA

SCALE	DATE	NO.
1"=200'	8/25/90	221