

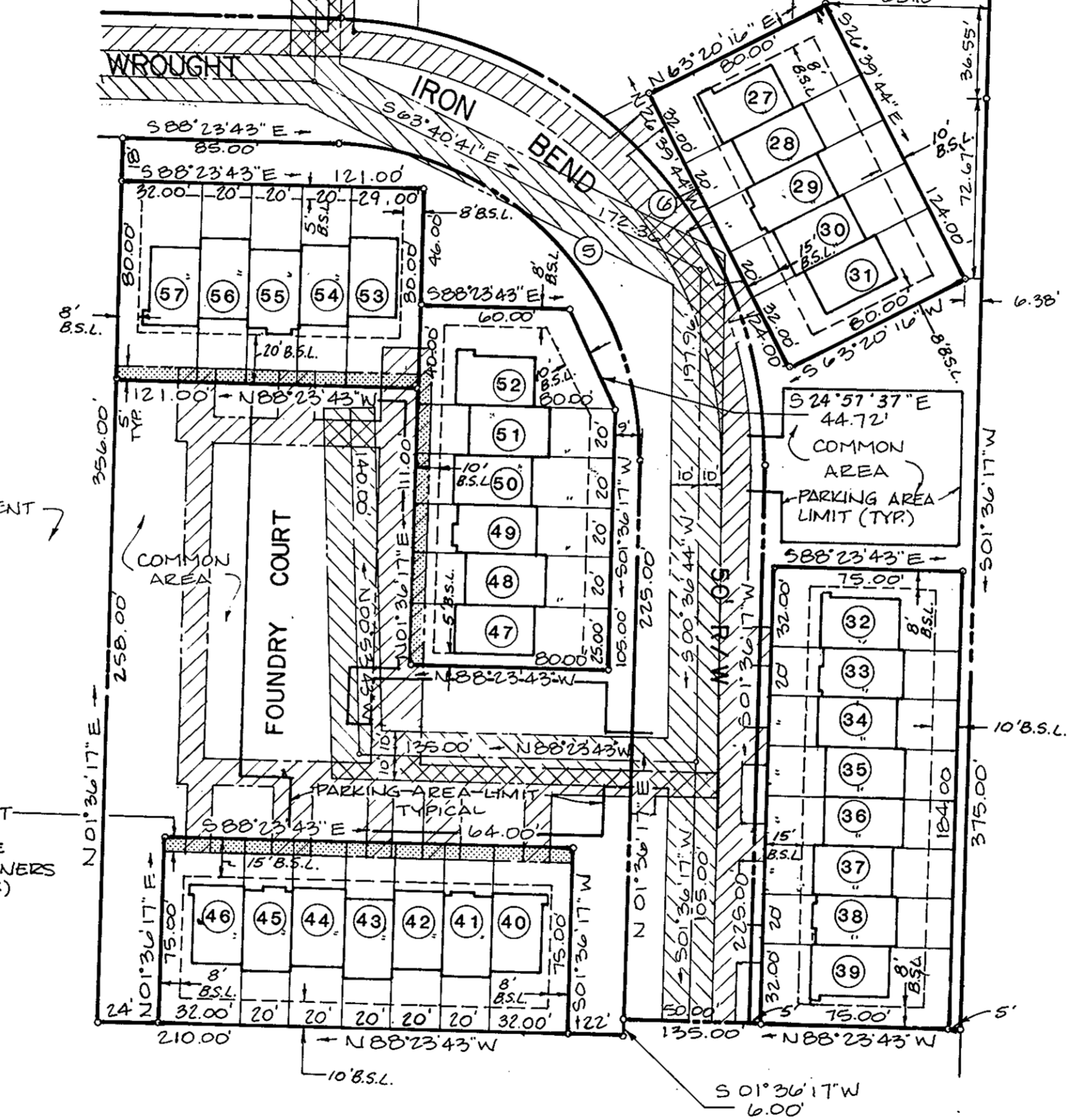
RESUBDIVISION OF  
 LOTS 1-7, 22-26  
 & COMMON AREA  
 SMITHY GLEN  
 SECTION ONE  
 COUNTY OF YORK, VIRGINIA

THE DeYOUNG - JOHNSON GROUP, INC.  
 P.O. BOX 197  
 WILLIAMSBURG, VA. 23187  
 SCALE: 1" = 50'  
 JUNE 25, 1991  
 SHEET 2 OF 2

CURVE DATA						
NO.	DELTA	RADIUS	ARC	TAN	CHORD	CHD. BEARING
1	115°32'23"	75.00'	151.24'	118.96'	126.89'	S01°36'17"W
2	115°32'23"	75.00'	151.24'	118.96'	126.89'	N01°36'17"E
3	90°00'00"	25.00'	39.27'	25.00'	35.36'	S43°23'43"E
4	90°00'00"	25.00'	39.27'	25.00'	35.36'	N46°36'17"E
5	90°00'00"	125.00'	196.35'	125.00'	176.78'	N43°23'43"W
6	90°00'00"	175.00'	274.89'	175.00'	247.49'	S43°23'43"E
A	10°12'12"	175.00'	31.17'	15.62'	31.12'	S83°17'37"E
B	15°10'29"	175.00'	46.35'	23.31'	46.21'	S70°36'16"E
C	07°30'06"	175.00'	22.91'	11.47'	22.90'	S59°15'59"E
D	04°33'31"	175.00'	13.92'	6.97'	13.92'	S53°14'10"E
E	52°33'42"	175.00'	160.54'	86.42'	154.97'	S24°40'34"E

LOT	AREA (S.F.)	LOT	AREA (S.F.)
1	4680	30	1600
2	2080	31	2560
3	2080	32	2400
4	2080	33	1500
5	2080	34	1500
6	2080	35	1500
7	4680	36	1500
8	2560	37	1500
9	1600	38	1500
10	1600	39	2400
11	1600	40	2400
12	1600	41	1500
13	1600	42	1500
14	2560	43	1500
15	2560	44	1500
16	1600	45	1500
17	1600	46	2400
18	1600	47	2000
19	1600	48	1600
20	1600	49	1600
21	2411.5	50	1600
22	3537	51	1600
23	2061	52	2800
24	2194	53	2320
25	1983	54	1600
26	3993	55	1600
27	2560	56	1600
28	1600	57	2560
29	1600		

EXISTING YORK COUNTY  
 20' DRAINAGE &  
 UTILITIES EASEMENT



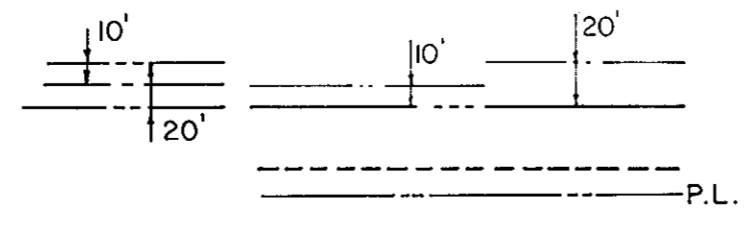
FUTURE DEVELOPMENT

EXISTING  
 5' PRIVATE EASEMENT  
 TO SMITHY  
 GLEN TOWNHOUSE  
 PROJECT HOMEOWNERS  
 ASSOCIATION (TYP.)

EASEMENT LEGEND

- EXISTING YORK COUNTY DRAINAGE AND UTILITIES EASEMENT.
- EXISTING CITY OF NEWPORT NEWS WATER MAIN EASEMENT.
- EXISTING PRIVATE EASEMENT TO SMITHY GLEN TOWNHOUSE PROJECT HOMEOWNERS ASSOCIATION.
- INDICATES PRIVATE EASEMENT HEREBY DEDICATED TO SMITHY GLEN TOWNHOUSE PROJECT HOMEOWNERS ASSOCIATION.

NOTE:  
 COMMON AREAS DEPICTED ARE DEDICATED TO THE SMITHY GLEN TOWNHOUSE PROJECT HOMEOWNERS ASSOCIATION.



LEGEND

EASEMENTS SHOWN THUS ARE HEREBY CONVEYED TO THE COUNTY OF YORK FOR DRAINAGE & UTILITIES

BUILDING SETBACK LINE

MONUMENTS SHOWN THUS IRON PIPES SHOWN THUS

APPROVED  
 YORK COUNTY BOARD OF SUPERVISORS

BY: J. Mark Carter  
 PLAT APPROVING AGENT  
 DATE: July 1, 1991

STATE OF VIRGINIA  
 COUNTY OF YORK

IN THE CLERK'S OFFICE OF THE CIRCUIT COURT FOR THE COUNTY OF YORK THE 1st DAY OF July, 1991 THIS MAP WAS PRESENTED & ADMITTED TO RECORD AS THE LAW DIRECTS IN PLAT BOOK 11, PAGE 330.

TESTE: NANCY B. KANE, CLERK  
 CLERK

BY: Carol Drosselmeier, Deputy Clerk  
 4/18/91