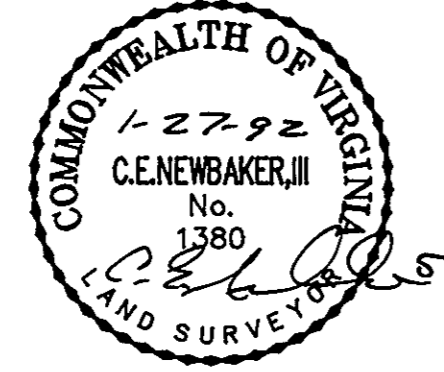


THE UNDERSIGNED CERTIFIES THAT THIS PLAN IS ACCURATE AND COMPLIES WITH THE PROVISIONS OF THE CODE OF VIRGINIA SECTION 55-79.58 (b) AND ALL UNITS DEPICTED HEREON HAVE BEEN SUBSTANTIALLY COMPLETED.

SIGNED: *C.E. Newbaker III* DATE: 1-27-92  
 C.E. NEWBAKER III, L.S. 1380



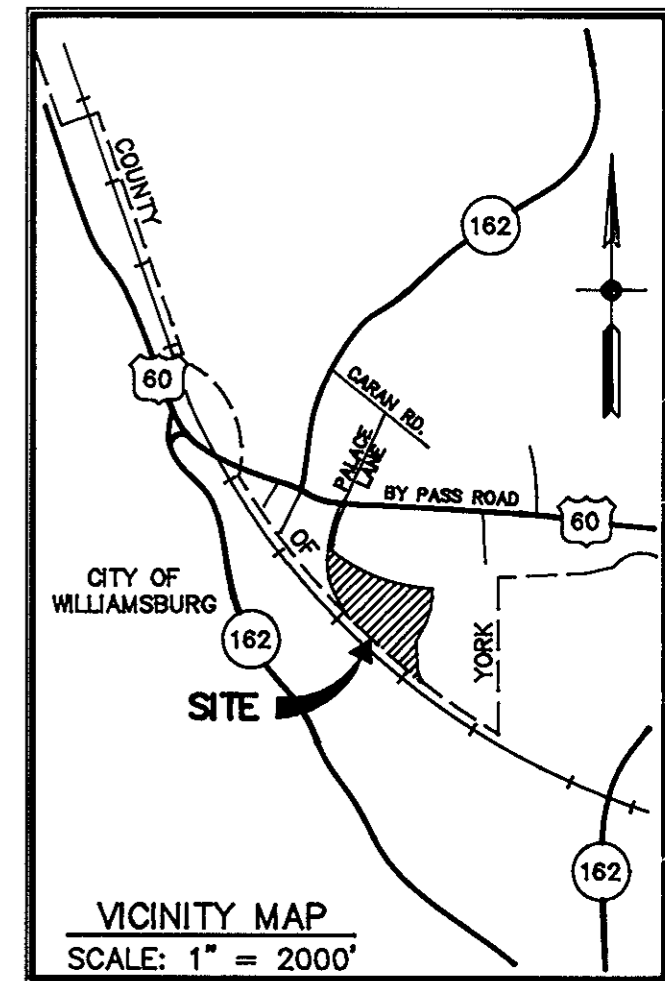
NOTES:  
 1. ALL BUILDING DIMENSIONS SHOWN HEREON ARE EXTERIOR DIMENSIONS AND ARE IN FEET.

PARCEL B = 17.630 ACRES

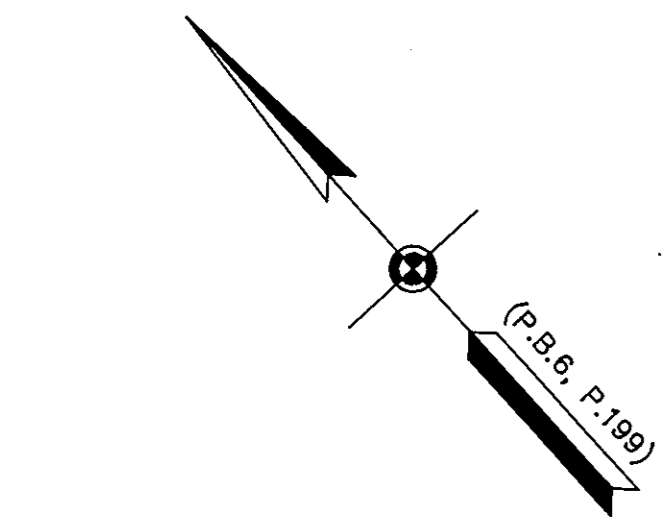
STATE OF VIRGINIA  
 COUNTY OF YORK

IN THE CLERK'S OFFICE OF THE CIRCUIT COURT FOR THE COUNTY OF YORK THE 31<sup>st</sup> DAY OF January 1992, THIS PLAT WAS PRESENTED AND ADMITTED TO RECORD AS THE LAW DIRECTS IN PLAT BOOK 11, PAGE 398-A

TESTE: NANCY B. KANE, CLERK  
 BY: *[Signature]*

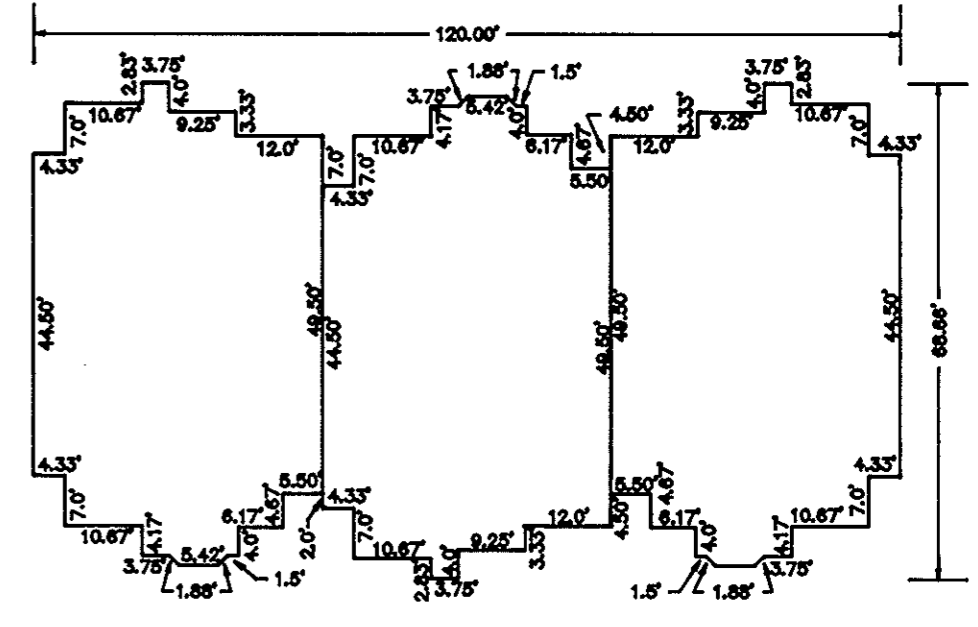
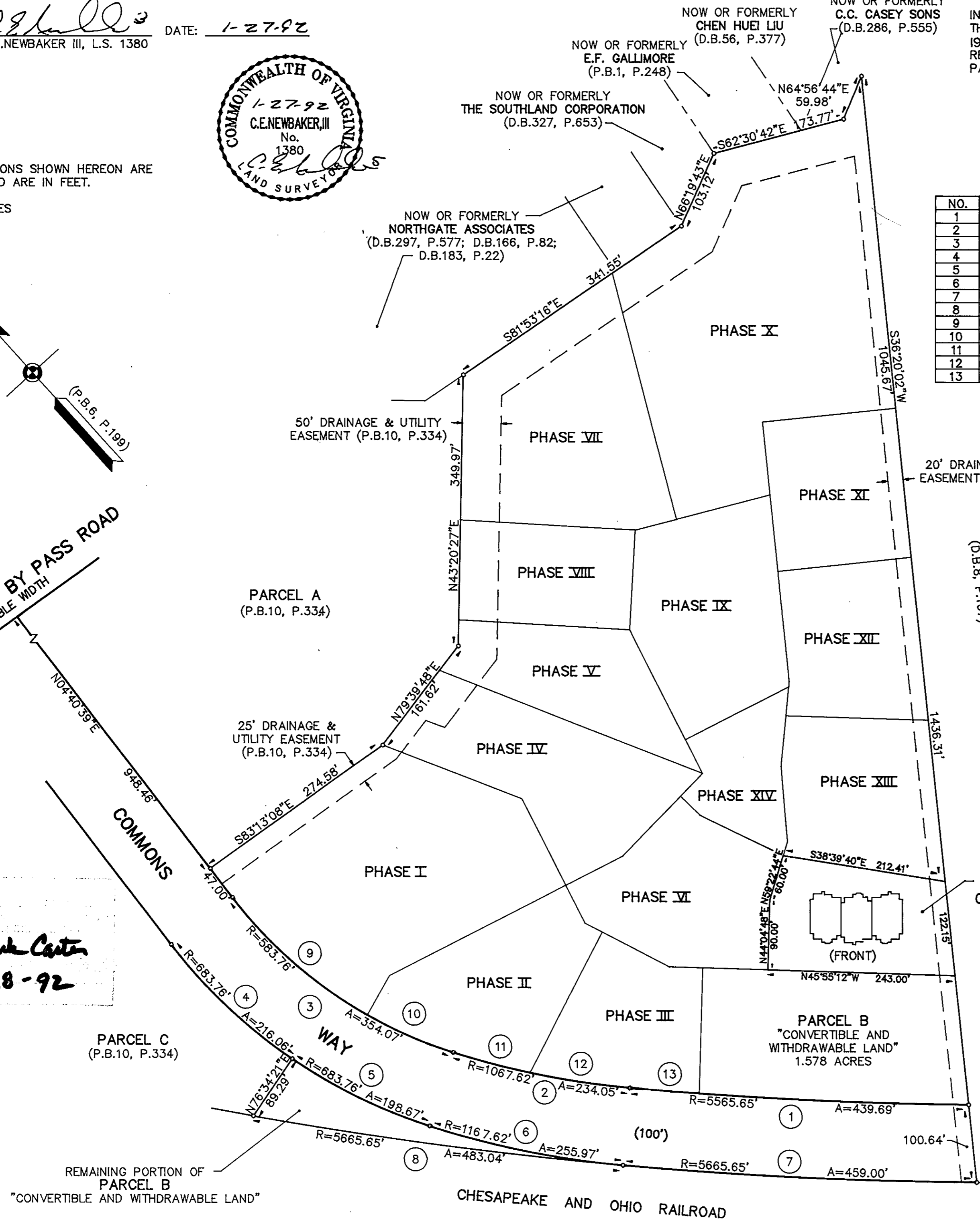


NO.	RADIUS	DELTA	ARC	TANGENT
1	5565.65'	04°31'35"	439.69'	219.96'
2	1067.62'	12°33'39"	234.05'	117.50'
3	583.76'	34°45'06"	354.07'	182.67'
4	683.76'	18°06'16"	216.06'	108.94'
5	683.76'	16°38'48"	198.67'	100.03'
6	1167.62'	12°33'39"	255.97'	128.50'
7	5665.65'	04°38'30"	459.00'	229.62'
8	5665.65'	04°53'06"	483.04'	241.67'
9	583.76'	22°51'55"	232.97'	118.05'
10	583.76'	11°53'11"	121.11'	60.77'
11	1067.62'	05°32'25"	103.23'	51.66'
12	1067.62'	07°01'14"	130.82'	65.49'
13	5565.65'	00°55'36"	90.00'	45.00'



U.S. ROUTE 60 BY PASS ROAD  
 VARIABLE WIDTH  
 COMMONS  
 WAY

*D. Mark Carter*  
 1-28-92



(FRONT) FIRST FLOOR BUILDING 7

EXHIBIT P  
 PHASE XV  
 SHEET 1 OF 4  
 PLAT OF  
**WILLIAMSBURG COMMONS CONDOMINIUMS**

FOR  
 WILLIAMSBURG COMMONS, INC.  
 A VIRGINIA CORPORATION  
 BRUTON DISTRICT - COUNTY OF YORK, VIRGINIA  
 SCALE: 1" = 100' JANUARY 27, 1992

0 50 100 200 300 400 FEET  
 GRAPHIC SCALE  
**THE SIRINE GROUP, LTD.**  
 SURVEYORS • ENGINEERS • PLANNERS  
 P.O. BOX 450, ROUTE 17  
 WHITE MARSH, VIRGINIA 23183