

STATE OF VIRGINIA COUNTY OF YORK  
IN THE CLERK'S OFFICE OF THE CIRCUIT COURT FOR THE  
COUNTY OF YORK, THE DAY OF \_\_\_\_\_, 1989, THIS  
PLAT WAS PRESENTED AND ADMITTED TO RECORD AS THE LAW DIRECTS  
IN PLAT BOOK \_\_\_\_\_ PAGE \_\_\_\_\_

SEE SHEET 1 FOR NOTES

Filed in the Clerk's Office, Circuit Court, York Co., Va.  
the 20th day of June, 1992

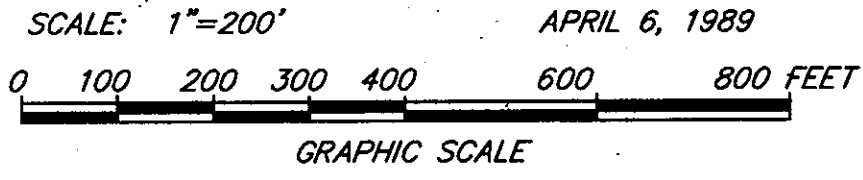
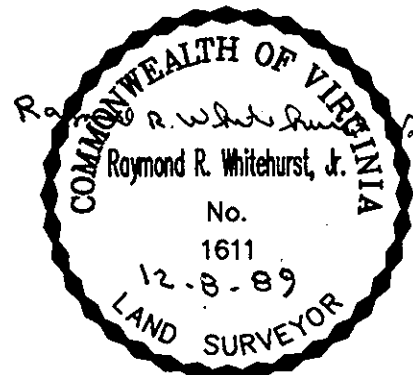
VIRGINIA:  
IN THE CLERK'S OFFICE OF THE CITY OF NEWPORT NEWS,  
THE DAY OF \_\_\_\_\_, 1989, THIS PLAT WAS PRESENTED  
AND ADMITTED TO RECORD AS THE LAW DIRECTS IN PLAT BOOK \_\_\_\_\_  
AT PAGE \_\_\_\_\_

TESTE: \_\_\_\_\_ CLERK  
BY: \_\_\_\_\_ D.C.

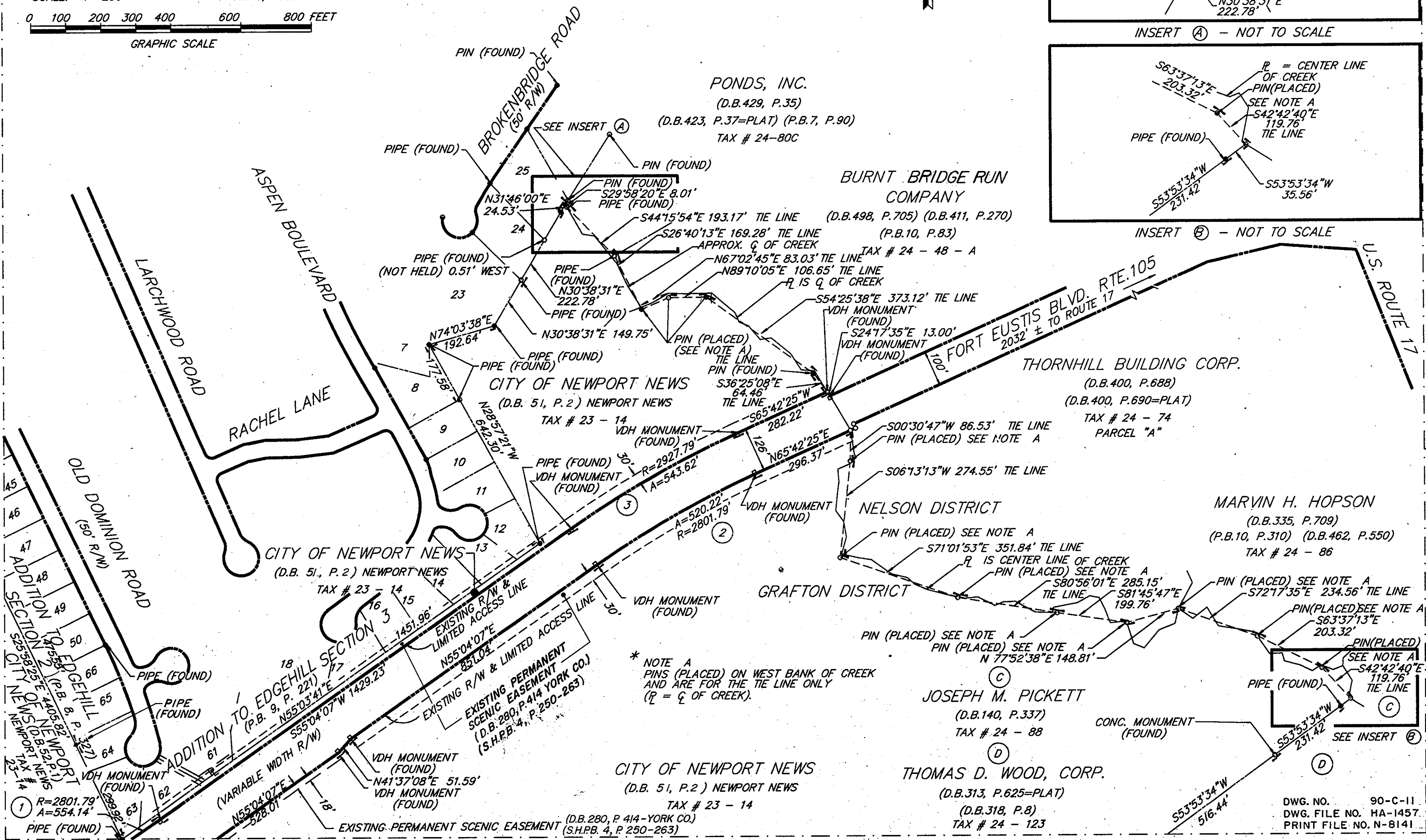
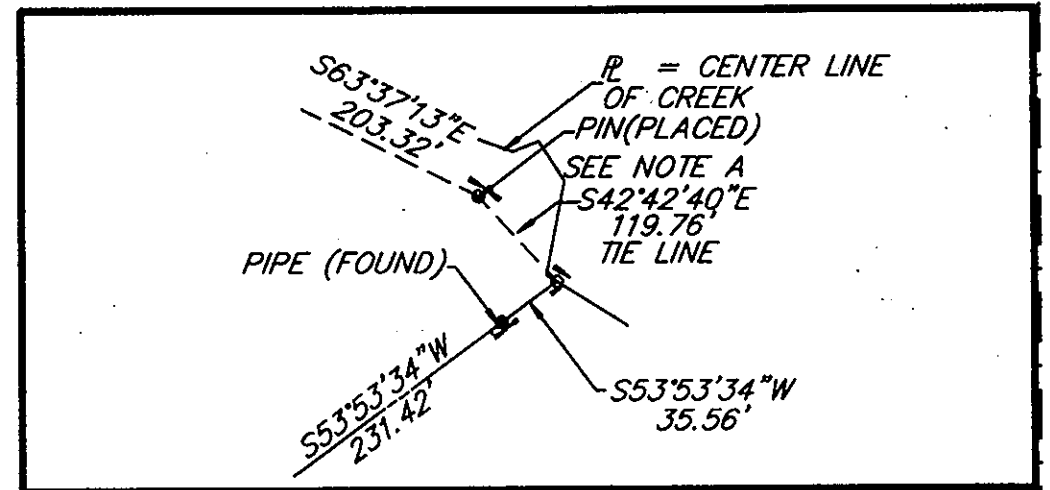
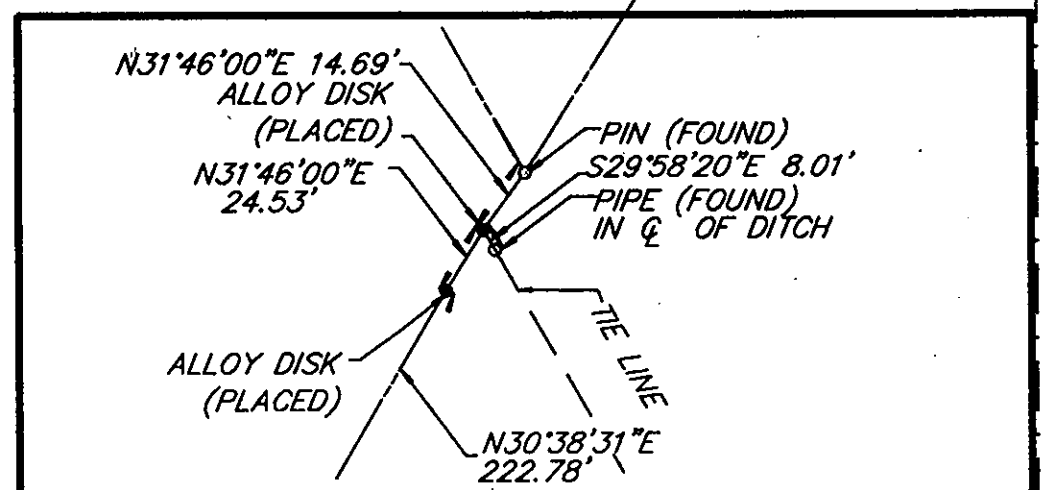
Teste: Nancy B. Kane, Clerk  
Carol Grosselmiert D.C.

Plat Book No. 11 Page 453

TESTE: \_\_\_\_\_ CLERK



CURVE TABLE						
NO.	DELTA	RADIUS	ARC	TANGENT	CHORD	CH. BEARING
1	117°55'	2801.79'	554.14'	277.98'	553.23'	S 60°44'04" W
2	10°38'18"	2801.79'	520.22'	260.86'	519.47'	N 60°23'16" E
3	10°38'18"	2927.79'	543.62'	272.59'	542.83'	S 60°23'16" W



\* NOTE A  
PINS (PLACED) ON WEST BANK OF CREEK  
AND ARE FOR THE TIE LINE ONLY  
(R = Q OF CREEK).

DWG. NO. 90-C-11  
DWG. FILE NO. HA-1457  
PRINT FILE NO. N-8141

MATCH LINE - SEE SHEET 32 OF 63

(SHEET 26 OF 63)

MATCH LINE - SEE SHEET 25 OF 63

MATCH LINE - SEE SHEET 33 OF 63