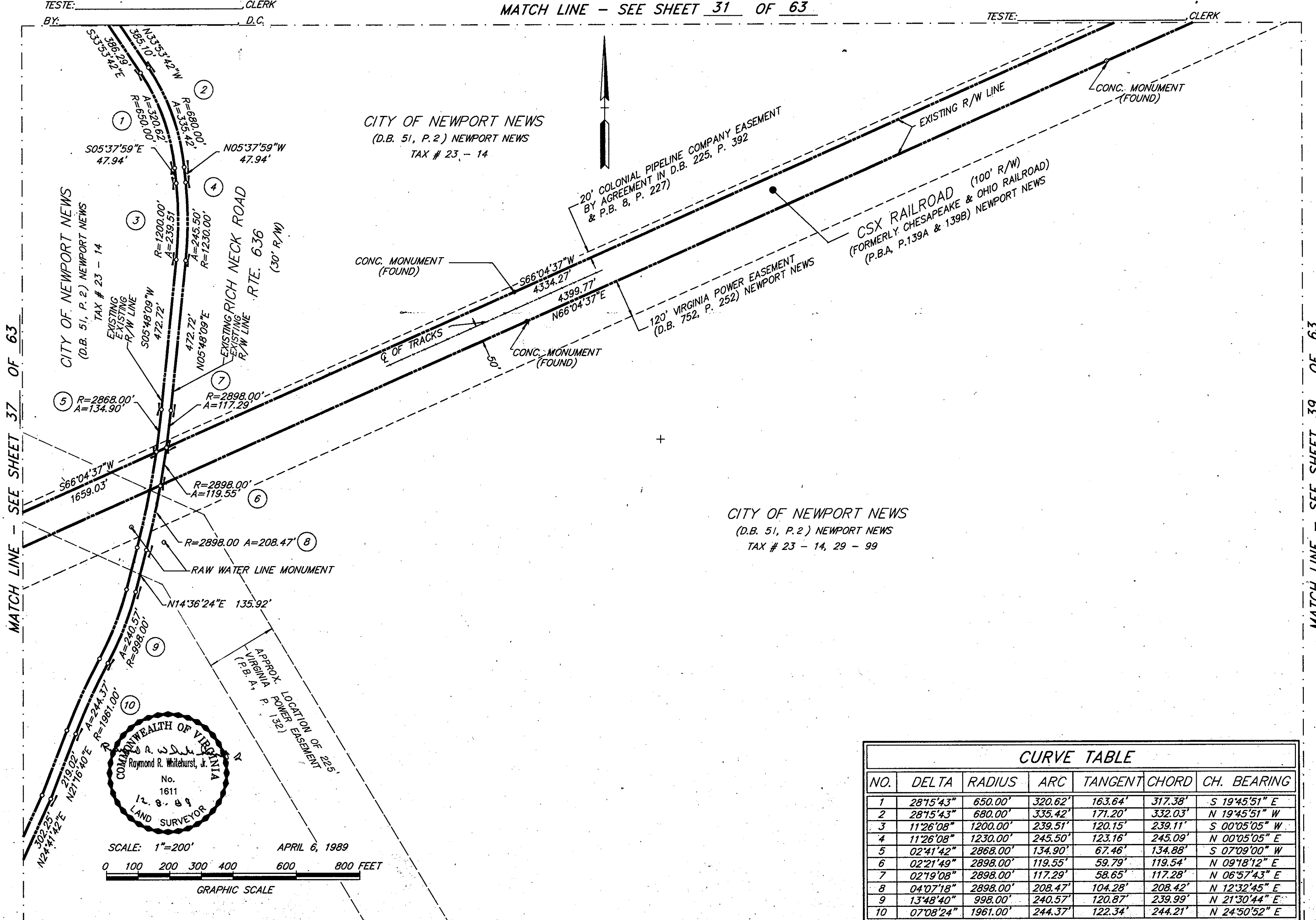


STATE OF VIRGINIA COUNTY OF YORK  
IN THE CLERK'S OFFICE OF THE CIRCUIT COURT FOR THE  
COUNTY OF YORK, THE DAY OF 1989, THIS  
PLAT WAS PRESENTED AND ADMITTED TO RECORD AS THE LAW DIRECTS  
IN PLAT BOOK PAGE

Filed in the Clerk's Office, Circuit Court, York Co., Va. SEE SHEET 1 FOR NOTES  
the 2nd day of June 1989  
Teste:  
Nancy B. Kane, Clerk  
Carol S. Sesselman D.C.  
Plat Book No. 11 Page 465

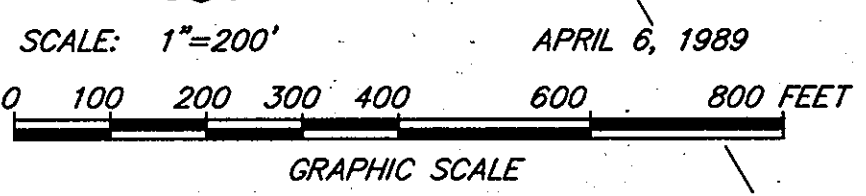
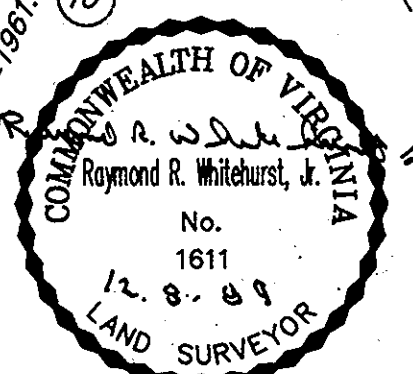
VIRGINIA:  
IN THE CLERK'S OFFICE OF THE CITY OF NEWPORT NEWS,  
THE DAY OF 1989, THIS PLAT WAS PRESENTED  
AND ADMITTED TO RECORD AS THE LAW DIRECTS IN PLAT BOOK  
AT PAGE

MATCH LINE - SEE SHEET 31 OF 63



MATCH LINE - SEE SHEET 37 OF 63

MATCH LINE - SEE SHEET 39 OF 63



CITY OF NEWPORT NEWS  
(D.B. 51, P.2) NEWPORT NEWS  
TAX # 23 - 14, 29 - 99

CURVE TABLE						
NO.	DELTA	RADIUS	ARC	TANGENT	CHORD	CH. BEARING
1	28°15'43"	650.00'	320.62'	163.64'	317.38'	S 19°45'51" E
2	28°15'43"	680.00'	335.42'	171.20'	332.03'	N 19°45'51" W
3	11°26'08"	1200.00'	239.51'	120.15'	239.11'	S 00°05'05" W
4	11°26'08"	1230.00'	245.50'	123.16'	245.09'	N 00°05'05" E
5	02°41'42"	2868.00'	134.90'	67.46'	134.88'	S 07°09'00" W
6	02°21'49"	2898.00'	119.55'	59.79'	119.54'	N 09°18'12" E
7	02°19'08"	2898.00'	117.29'	58.65'	117.28'	N 06°57'43" E
8	04°07'18"	2898.00'	208.47'	104.28'	208.42'	N 12°32'45" E
9	13°48'40"	998.00'	240.57'	120.87'	239.99'	N 21°30'44" E
10	07°08'24"	1961.00'	244.37'	122.34'	244.21'	N 24°50'52" E

MATCH LINE - SEE SHEET 44 OF 63