

PLAT OF CONDOMINIUM
**EAGLE SOUND
 AT KILN CREEK**
 A CONDOMINIUM
 PHASE ONE
 THE VILLAGES OF KILN CREEK
 COUNTY OF YORK, VIRGINIA

DATE: DEC. 2, 1991 SHEET 2 OF 2 SCALE: 1" = 50'

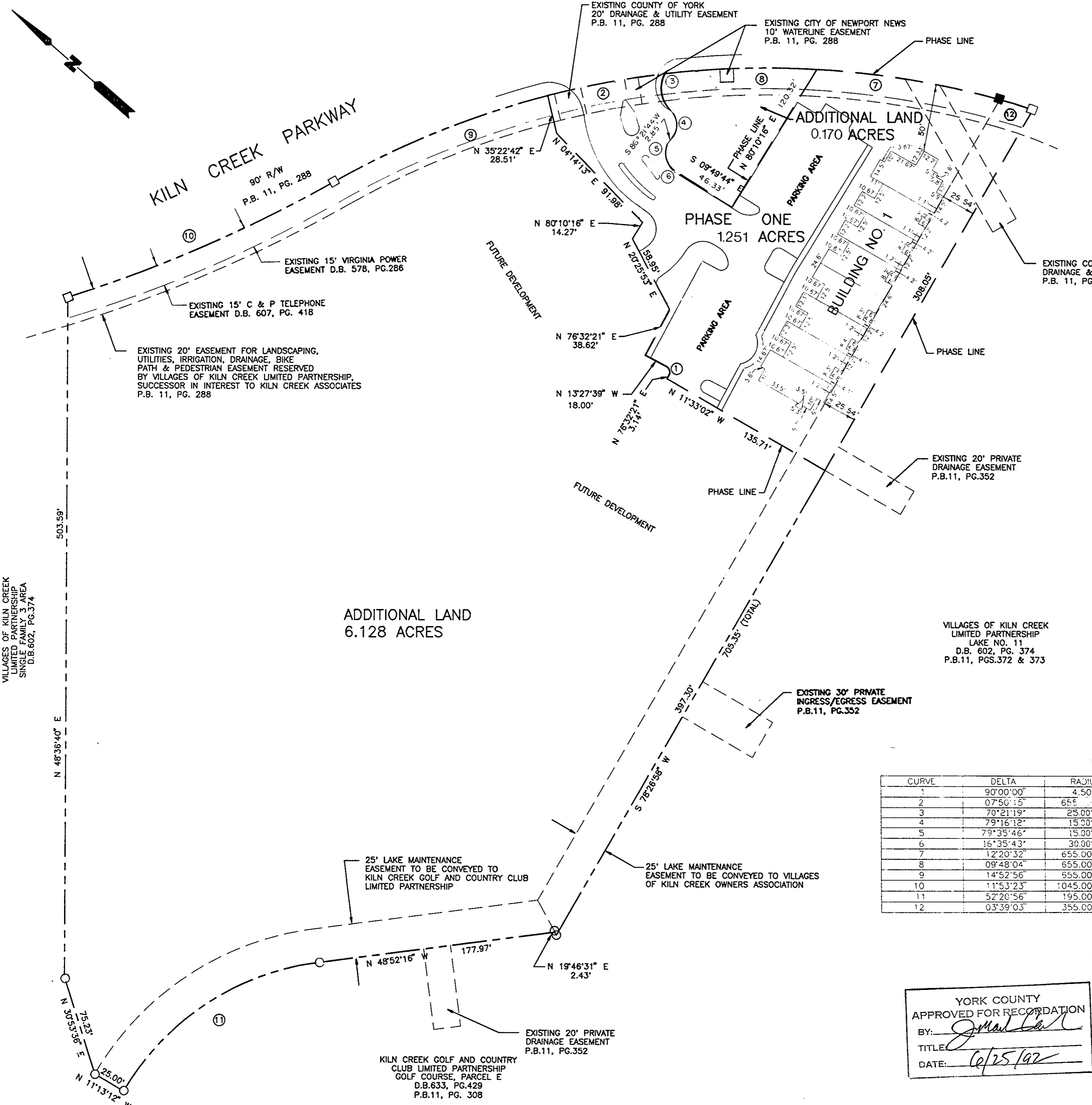
SRA SLEDD, RUNEY & ASSOCIATES, P.C.
 ENGINEERS PLANNERS SURVEYORS
 11832 ROCK LANDING DRIVE, SUITE 203
 NEWPORT NEWS, VIRGINIA 23606
 (804) 873-3386

EXHIBIT A-2

AREA TABULATION

PHASE 1	1.251 AC.
ADDITIONAL LAND	6.298 AC.
TOTAL AREA OF SITE	7.549 AC.

PARKING TABULATION
 39 SPACES



CURVE DATA TABLE

CURVE	DELTA	RADIUS	LENGTH	TANGENT	CHORD	BEARING
1	90°00'00"	4.50'	7.07'	4.50'	6.36'	N 31°32'21" E
2	07°50'15"	655.00'	13.67'	14.87'	89.53'	S 52°00'55" E
3	70°21'19"	25.00'	30.70'	17.62'	28.81'	S 42°16'12" W
4	79°16'12"	15.00'	20.75'	12.42'	19.14'	N 46°43'39" E
5	79°35'46"	15.00'	20.84'	12.50'	19.20'	S 46°33'51" W
6	16°35'43"	30.00'	8.69'	4.38'	8.66'	S 01°35'01" E
7	12°20'32"	655.00'	141.10'	70.82'	140.82'	N 32°07'27" W
8	09°48'04"	655.00'	112.05'	56.16'	111.91'	S 43°11'45" E
9	14°52'56"	655.00'	170.13'	85.55'	169.65'	N 63°22'30" W
10	11°53'23"	1045.00'	216.85'	108.82'	216.46'	S 64°52'16" E
11	52°20'56"	195.00'	178.16'	95.84'	172.03'	N 75°02'44" W
12	03°39'03"	355.00'	22.62'	11.31'	22.62'	S 24°07'40" E

STATE OF VIRGINIA
 COUNTY OF YORK

YORK COUNTY
 APPROVED FOR RECORDATION
 BY: *[Signature]*
 TITLE: _____
 DATE: *6/25/92*

IN THE CLERK'S OFFICE OF THE CIRCUIT COURT FOR
 THE COUNTY OF YORK, THE 25th DAY OF *June*, 1992.
 THIS MAP WAS PRESENTED AND ADMITTED TO RECORD AS
 THE LAW DIRECTS IN PLAT BOOK 11, PAGE 495.
 TESTE: **NANCY B. KANE, CLERK** 12:50 pm
 CLERK
 BY: *Karen D. Keegan, P.C.*

VILLAGES OF KILN CREEK
 LIMITED PARTNERSHIP
 SINGLE FAMILY 3-AREA
 D.B. 602, PG. 374

ADDITIONAL LAND
 6.128 ACRES

VILLAGES OF KILN CREEK
 LIMITED PARTNERSHIP
 LAKE NO. 11
 D.B. 602, PG. 374
 P.B. 11, PGS. 372 & 373

25' LAKE MAINTENANCE
 EASEMENT TO BE CONVEYED TO
 KILN CREEK GOLF AND COUNTRY CLUB
 LIMITED PARTNERSHIP

25' LAKE MAINTENANCE
 EASEMENT TO BE CONVEYED TO VILLAGES
 OF KILN CREEK OWNERS ASSOCIATION

KILN CREEK GOLF AND COUNTRY
 CLUB LIMITED PARTNERSHIP
 GOLF COURSE, PARCEL E
 D.B. 633, PG. 429
 P.B. 11, PG. 308

EXISTING 20' PRIVATE
 DRAINAGE EASEMENT
 P.B. 11, PG. 352

EXISTING 30' PRIVATE
 INGRESS/EGRESS EASEMENT
 P.B. 11, PG. 352

EXISTING 20' PRIVATE
 DRAINAGE EASEMENT
 P.B. 11, PG. 352

EXISTING COUNTY OF YORK 20'
 DRAINAGE & UTILITY EASEMENT
 P.B. 11, PG. 288

EXISTING CITY OF NEWPORT NEWS
 10' WATERLINE EASEMENT
 P.B. 11, PG. 288

EXISTING COUNTY OF YORK
 20' DRAINAGE & UTILITY EASEMENT
 P.B. 11, PG. 288

KILN CREEK PARKWAY
 90' R/W
 P.B. 11, PG. 288

EXISTING 15' VIRGINIA POWER
 EASEMENT D.B. 578, PG. 286

EXISTING 15' C & P TELEPHONE
 EASEMENT D.B. 607, PG. 418

EXISTING 20' EASEMENT FOR LANDSCAPING,
 UTILITIES, IRRIGATION, DRAINAGE, BIKE
 PATH & PEDESTRIAN EASEMENT RESERVED
 BY VILLAGES OF KILN CREEK LIMITED PARTNERSHIP,
 SUCCESSOR IN INTEREST TO KILN CREEK ASSOCIATES
 P.B. 11, PG. 288

503.59'

N 48°36'40" E

N 30°33'36" E

N 11°13'12" W

N 48°52'16" W

177.97'

N 19°46'31" E
 2.43'

397.30'

S 78°28'58" W

PHASE LINE

PHASE LINE

PHASE LINE

FUTURE DEVELOPMENT

FUTURE DEVELOPMENT

PHASE LINE

PHASE ONE
 1.251 ACRES

ADDITIONAL LAND
 0.170 ACRES

PHASE LINE
 N 80°10'16" E
 14.27'

N 80°10'16" E
 14.27'

N 20°25'53" E
 58.95'

N 76°32'21" E
 38.62'

N 13°27'39" W
 18.00'

N 76°32'21" E
 31.14'

N 11°33'02" W

135.71'

PHASE LINE

705.35' (TOTAL)

397.30'

397.30'

397.30'

397.30'

397.30'

397.30'

397.30'

397.30'

397.30'

397.30'