

THE UNDERSIGNED CERTIFIES THAT THIS PLAN IS ACCURATE AND COMPLIES WITH THE PROVISIONS OF THE CODE OF VIRGINIA SECTION 55-79.58 (b) AND ALL UNITS DEPICTED HEREON HAVE BEEN SUBSTANTIALLY COMPLETED.

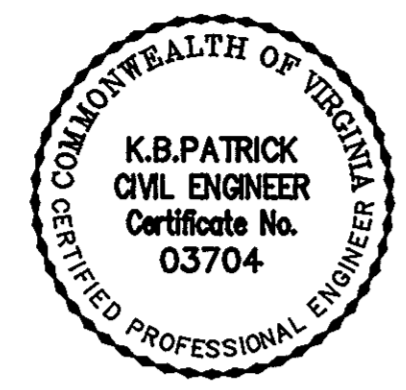
NOTES:

- 1. ALL BUILDING DIMENSIONS SHOWN HEREON ARE EXTERIOR DIMENSIONS AND ARE IN FEET.

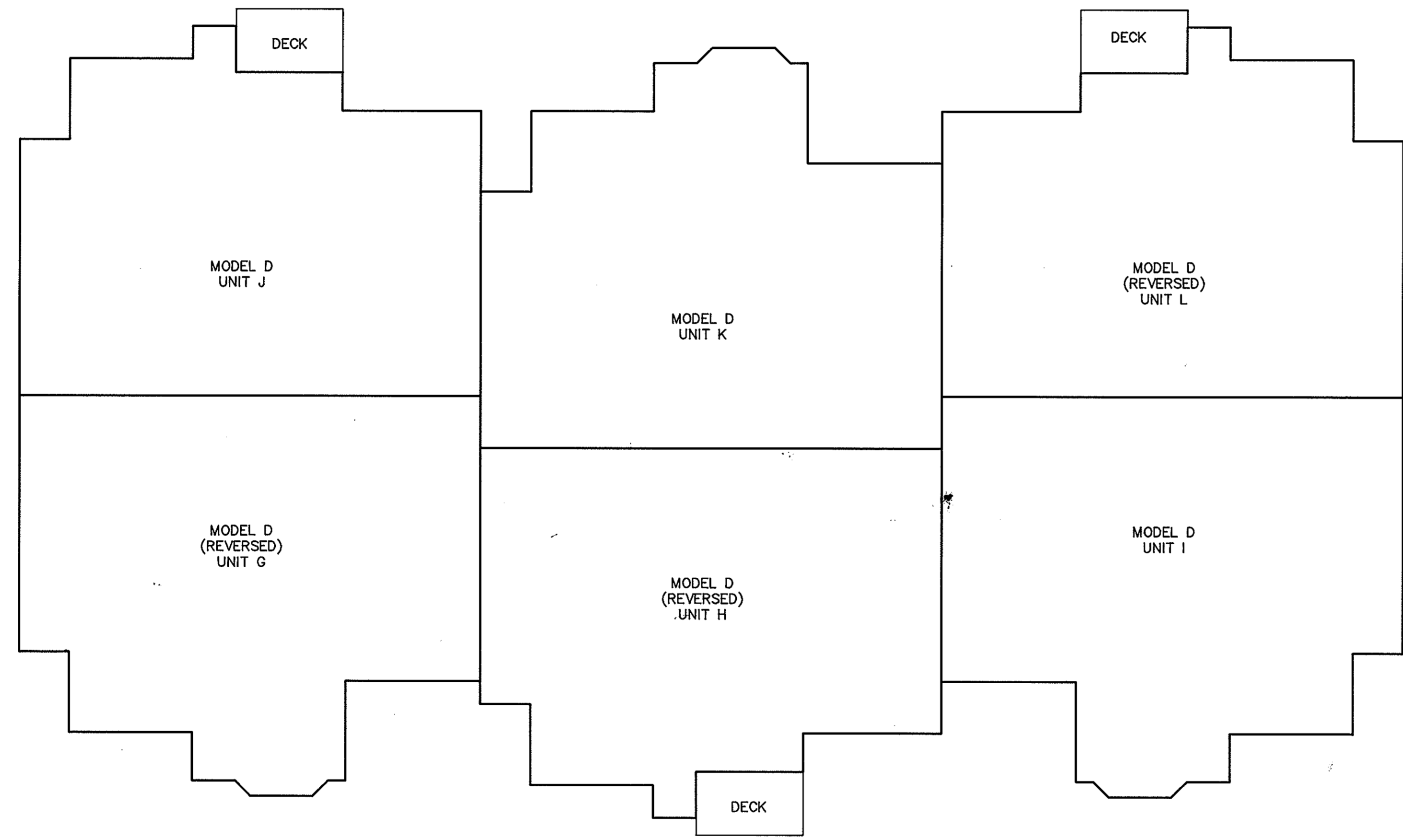
STATE OF VIRGINIA
COUNTY OF YORK

IN THE CLERK'S OFFICE OF THE CIRCUIT COURT FOR THE COUNTY OF YORK THE 17th DAY OF July, 1992, THIS PLAT WAS PRESENTED AND ADMITTED TO RECORD AS THE LAW DIRECTS IN PLAT BOOK 11, PAGE 512.

SIGNED: Kenton B. Patrick DATE: 6/24/92
KENTON B. PATRICK, P.E.



TESTE: NANCY B. KANE, CLERK
CLERK
BY: Richard R. D'Amico, Jr.



(FRONT)
SECOND FLOOR
BUILDING 5

EXHIBIT R
PHASE XVII
SHEET 4 OF 4
PLAT OF
WILLIAMSBURG COMMONS CONDOMINIUMS
FOR
WILLIAMSBURG COMMONS, INC.,
A VIRGINIA CORPORATION
BRUTON DISTRICT - COUNTY OF YORK, VIRGINIA
SCALE: 1/8" = 1'-0" APRIL 20, 1992



GRAPHIC SCALE
THE SIRINE GROUP, LTD.
SURVEYORS • ENGINEERS • PLANNERS
P.O. BOX 450, ROUTE 17
WHITE MARSH, VIRGINIA 23183