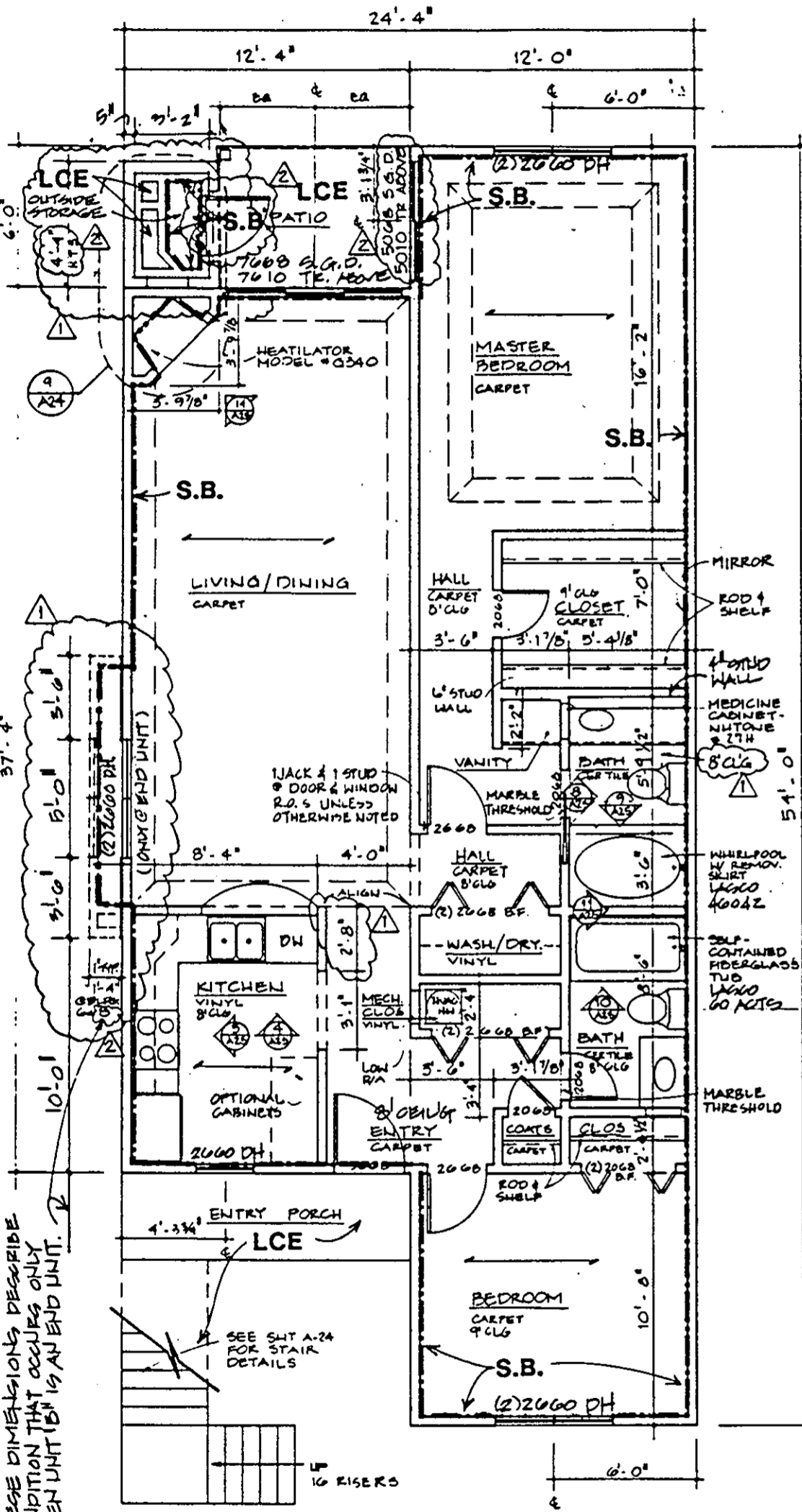
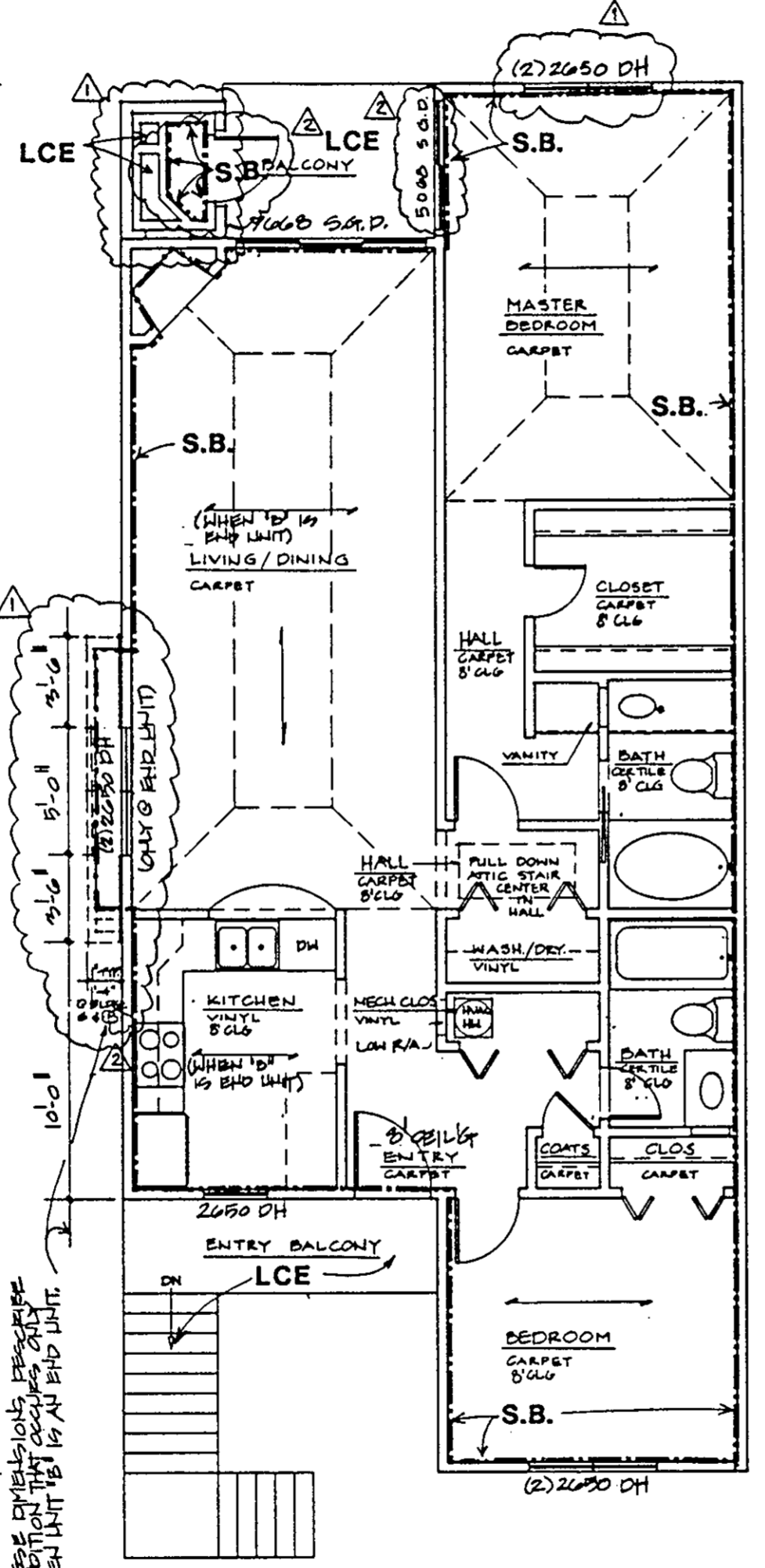


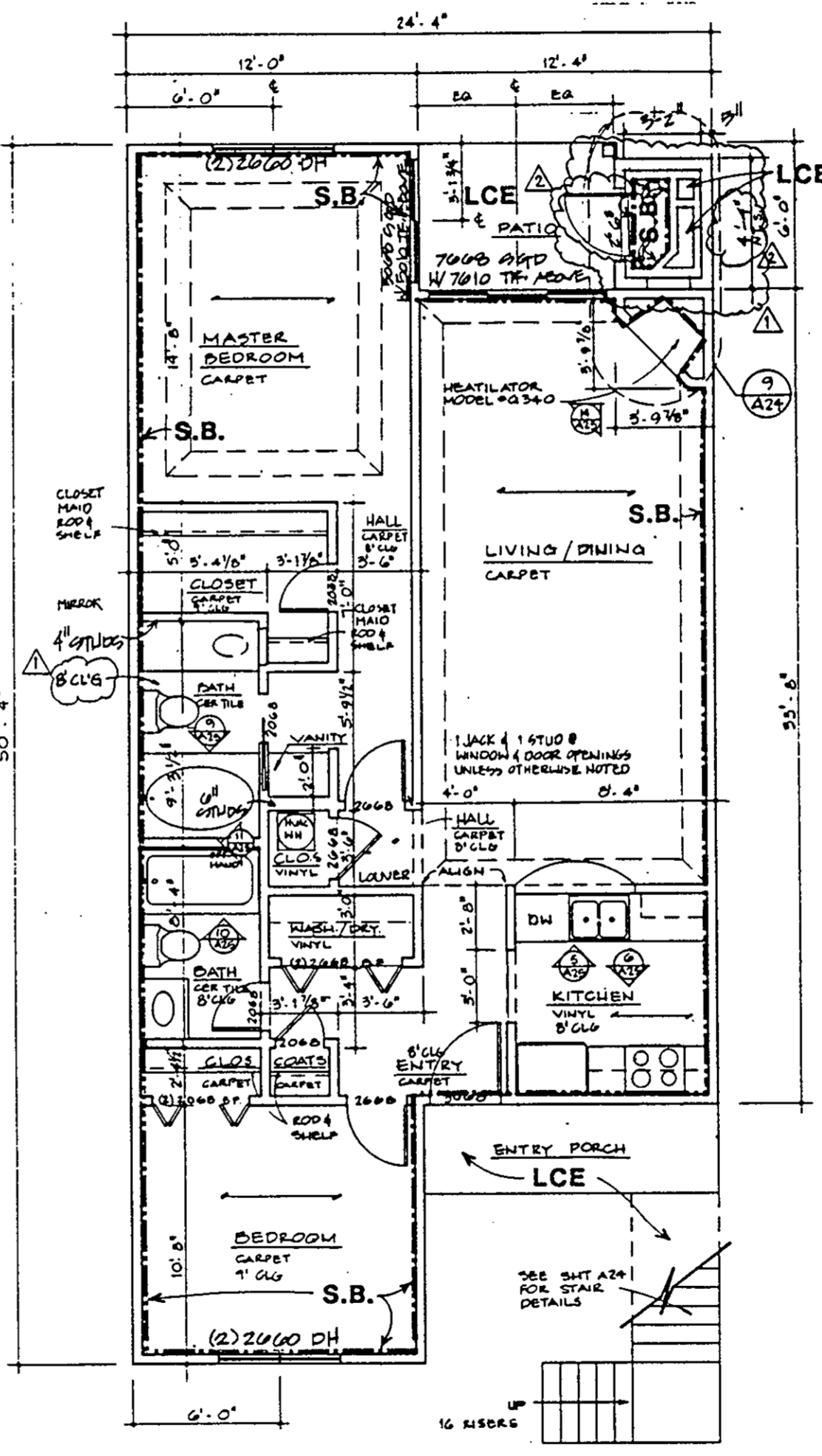
Plat Book No. 11 Page 531  
 Filed in the Clerk's Office, Circuit Court, York Co., Va.  
 the 11th day of September 1992  
 Teste: Nancy B. Kane, Clerk.  
*Karen D. Kilgus* D.C.



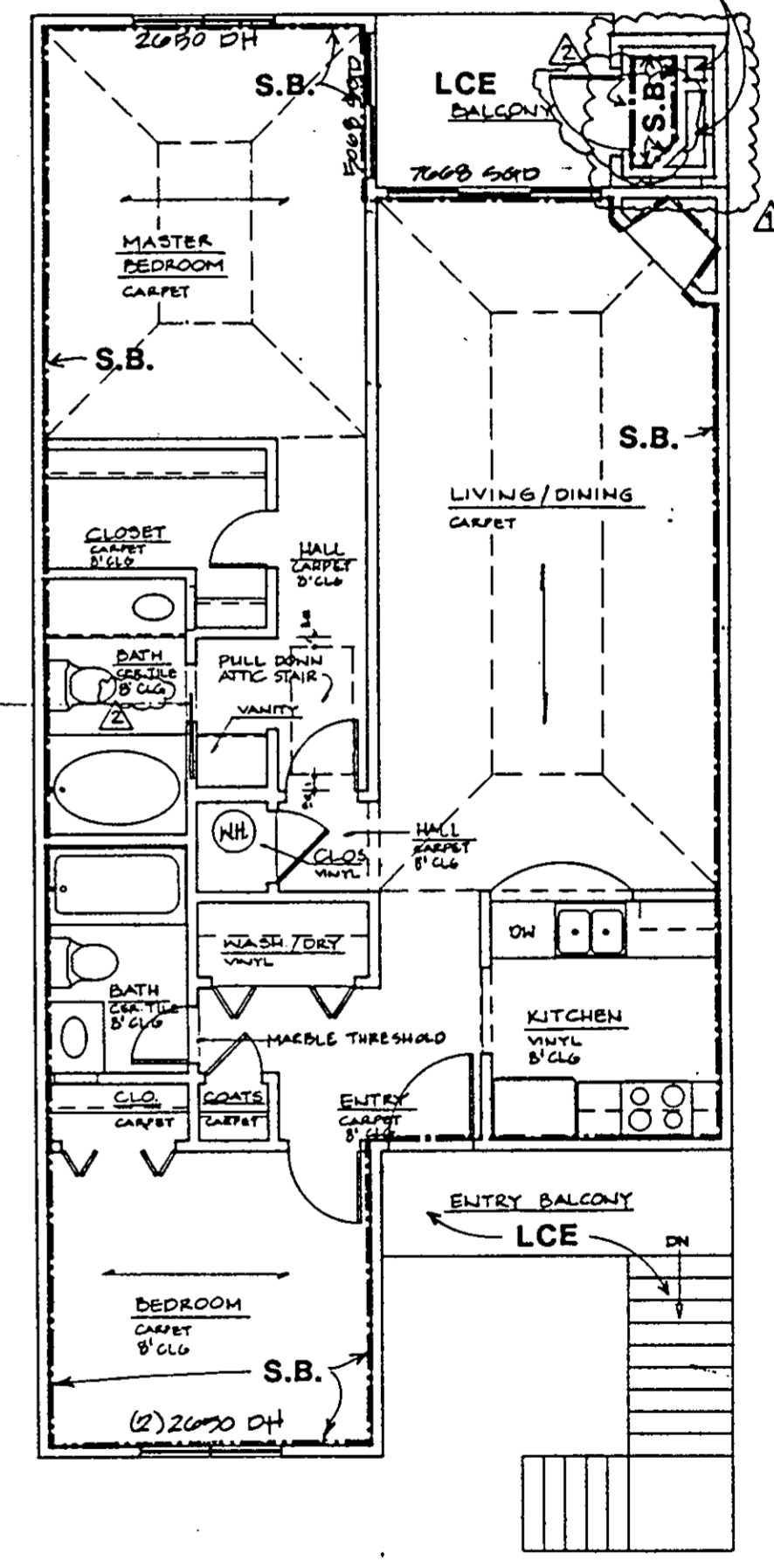
FIRST FLR. PLAN - UNIT "B"



SECOND FLR. PLAN - UNIT "B"



FIRST FLR. PLAN - UNIT "C"



SECOND FLR. PLAN - UNIT "C"

ARCHITECT'S CERTIFICATE

I hereby certify that this is a correct and accurate plan, that this plan is in compliance with Virginia Code Ann. Subsections 55-79.58 (b) and (e), and that the units depicted hereon have been substantially completed.  
*Robert A. Magoon Jr.*  
 Date 9/10/92

LEGEND:  
 S.B. - SIDE (PERIMETER) BOUNDARY  
 LCE - LIMITED COMMON ELEMENT  
 CE - COMMON ELEMENT

THESE DIMENSIONS DESCRIBE CONDITION THAT OCCURS ONLY WHEN UNIT IS AN END UNIT.

THESE DIMENSIONS DESCRIBE CONDITION THAT OCCURS ONLY WHEN UNIT IS AN END UNIT.

Plat of Condominium  
 EAGLE SOUND AT KILN CREEK  
 YORK COUNTY, VIRGINIA

WILLIAMS, TAZEWELL AND ASSOCIATES  
 Architecture Engineering Planning Interiors  
 710 West 21st Street,  
 Norfolk, Virginia 23517

EXHIBIT  
 A-3  
 PHASE  
 SIX

File  
 9146.01A  
 Date

Sheet  
 3 of 5

|    |          |           |    |
|----|----------|-----------|----|
| NO | DATE     | REVISIONS | BY |
|    | 10/26/91 | ADDENDA   |    |