

GRAFTON WOODS

SECTION FIVE

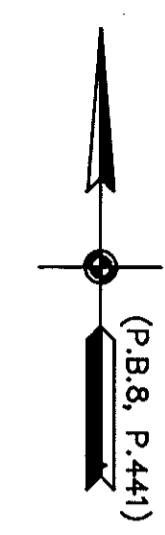
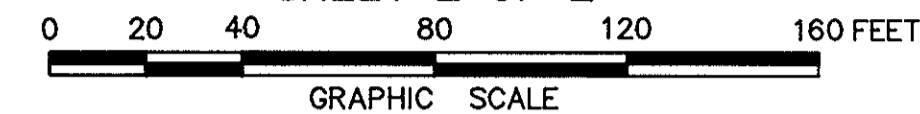
GRAFTON DISTRICT - COUNTY OF YORK, VIRGINIA

THE SIRINE GROUP, LTD.

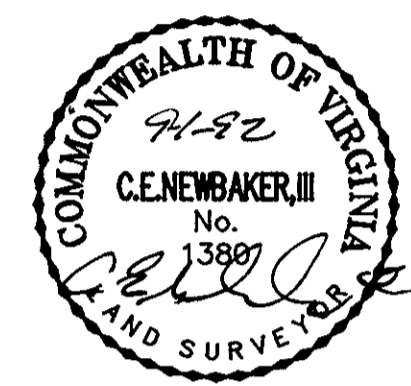
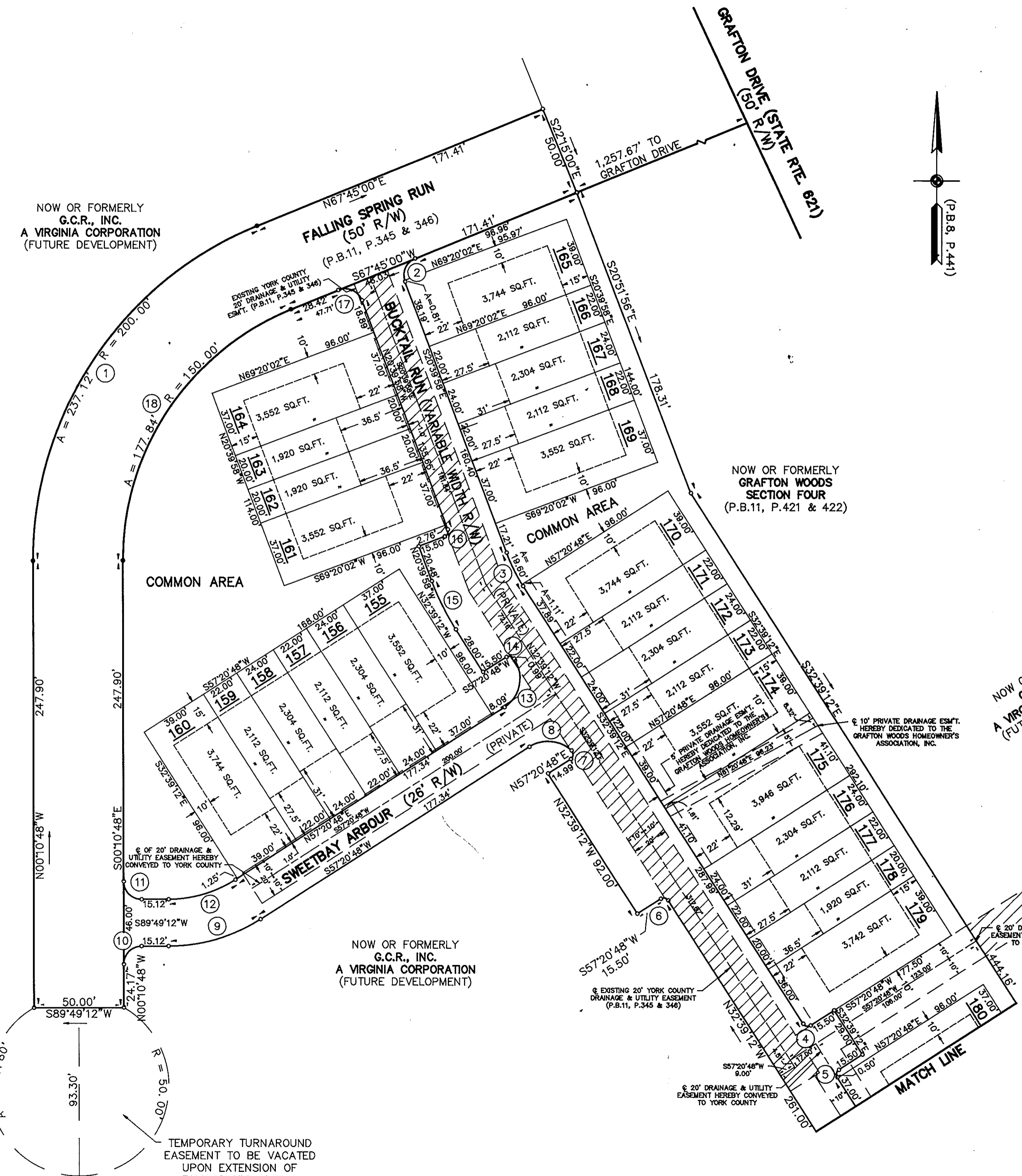
SURVEYORS • ENGINEERS • PLANNERS
P.O. BOX 450, ROUTE 17
WHITE MARSH, VIRGINIA 23183

SCALE: 1" = 40' JUNE 30, 1992

SHEET 2 OF 2



NOW OR FORMERLY
G.C.R., INC.
A VIRGINIA CORPORATION
(FUTURE DEVELOPMENT)



NOW OR FORMERLY
GRAFTON WOODS
SECTION FOUR
(P.B. 11, P. 421 & 422)

NOW OR FORMERLY
G.C.R., INC.
A VIRGINIA CORPORATION
(FUTURE DEVELOPMENT)

NOW OR FORMERLY
GRAFTON WOODS
SECTION FOUR
(P.B. 11, P. 421 & 422)

NOW OR FORMERLY
COUNTY SCHOOL BOARD OF YORK
(D.B. 588, P. 97; P.B. 11, P. 227)

NOW OR FORMERLY
G.C.R., INC.
A VIRGINIA CORPORATION
(FUTURE DEVELOPMENT)

TEMPORARY TURNAROUND
EASEMENT TO BE VACATED
UPON EXTENSION OF
FALLING SPRING RUN

APPROVED:
YORK COUNTY BOARD OF SUPERVISORS
BY: *[Signature]*
PLAT APPROVING AGENT
DATE: SEPT. 23, 1992

STATE OF VIRGINIA
COUNTY OF YORK
IN THE CLERK'S OFFICE OF THE CIRCUIT COURT FOR
THE COUNTY OF YORK THE 24 DAY OF Sept.
1992, THIS PLAT WAS PRESENTED AND ADMITTED TO
RECORD AS THE LAW DIRECTS IN PLAT BOOK 11,
PAGE 535.

TESTE: NANCY B. KANE, CLERK
CLERK
BY: *[Signature]*

PROPERTY IS A PORTION OF ASSESSOR'S PARCEL
NUMBERS 29-6, 6A AND 7.