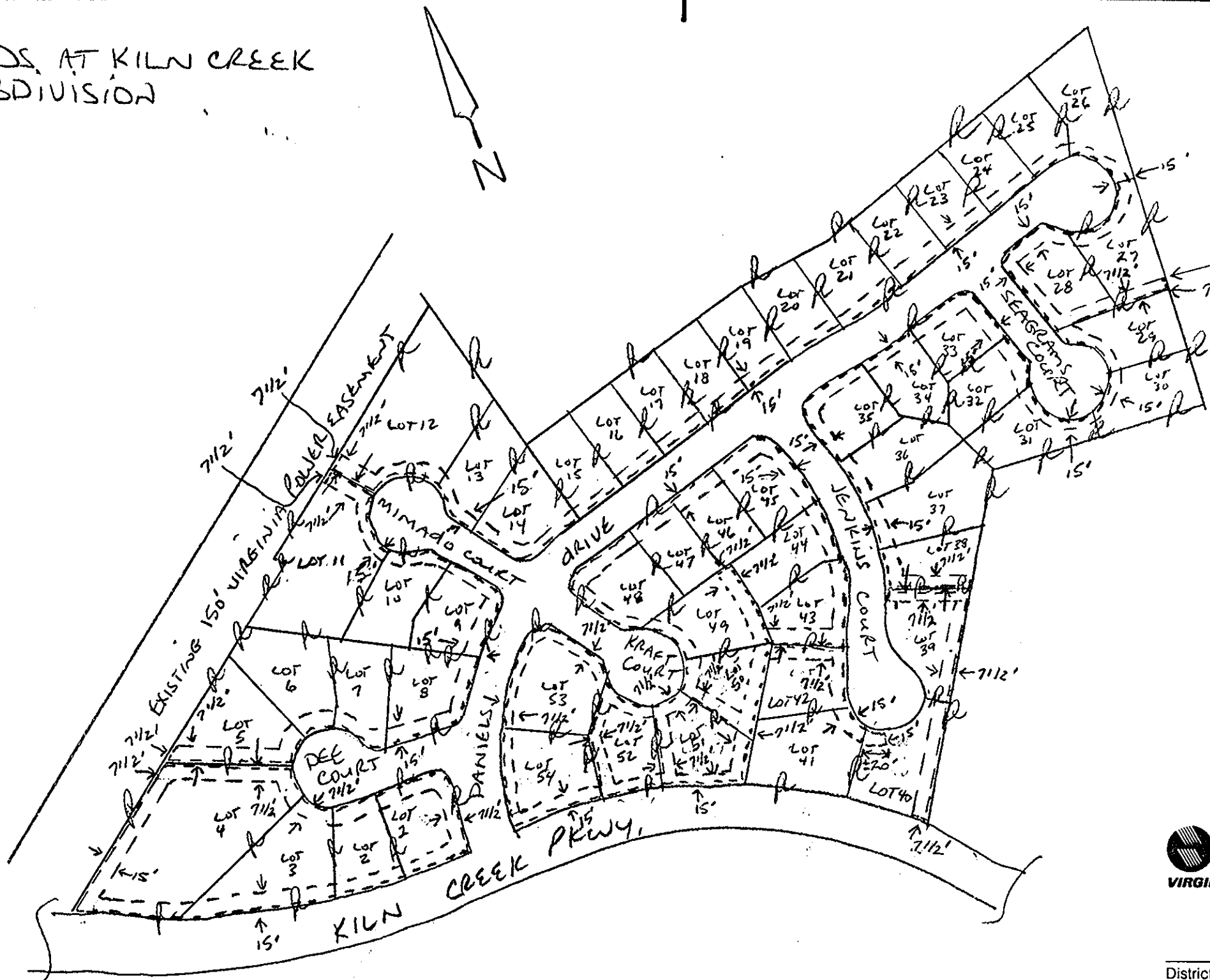


HIGHLANDS AT KILN CREEK SUBDIVISION



PROPERTY OWNERS
 KILN CREEK JOINT VENTURES,
 A GENERAL PARTNERSHIP, BY:
 VILLAGES OF KILN CREEK, A LIMITED
 PARTNERSHIP BY: MARILYN S. DELUCA,
 VICE PRESIDENT.

Legend
 --- Location Of Boundary Line Of Designated Right-of-Way
 Width AS SHOWN IN FEET
 - - - - - INDICATES PROPERTY LINE
 IS RIGHT-OF-WAY BOUNDARY.

Filed in the Clerk's Office, Circuit Court, York Co., Va.
 the 17th day of December 1992
 Teste:
 Nancy B. Kane, Clerk
 [Signature] D.C.
 plat Book II page 552
 DB 699 p 575



Plat To Accompany
 Right-Of-Way Agreement

Virginia Electric and Power Company [Signature]

UNDERGROUND

District	<u>PENINSULA</u>		
District-Township-Borough	County-City	State	
	<u>YORK COUNTY VA,</u>		
Office	Plat Number		
<u>PENINSULA</u>	<u>22 92 0212</u>		
Estimate Number	Grid Number		
<u>2220900914</u>	<u>N0029</u>		
Date	By		
<u>12-11-92</u>	<u>Dodd M. Blanton</u>		