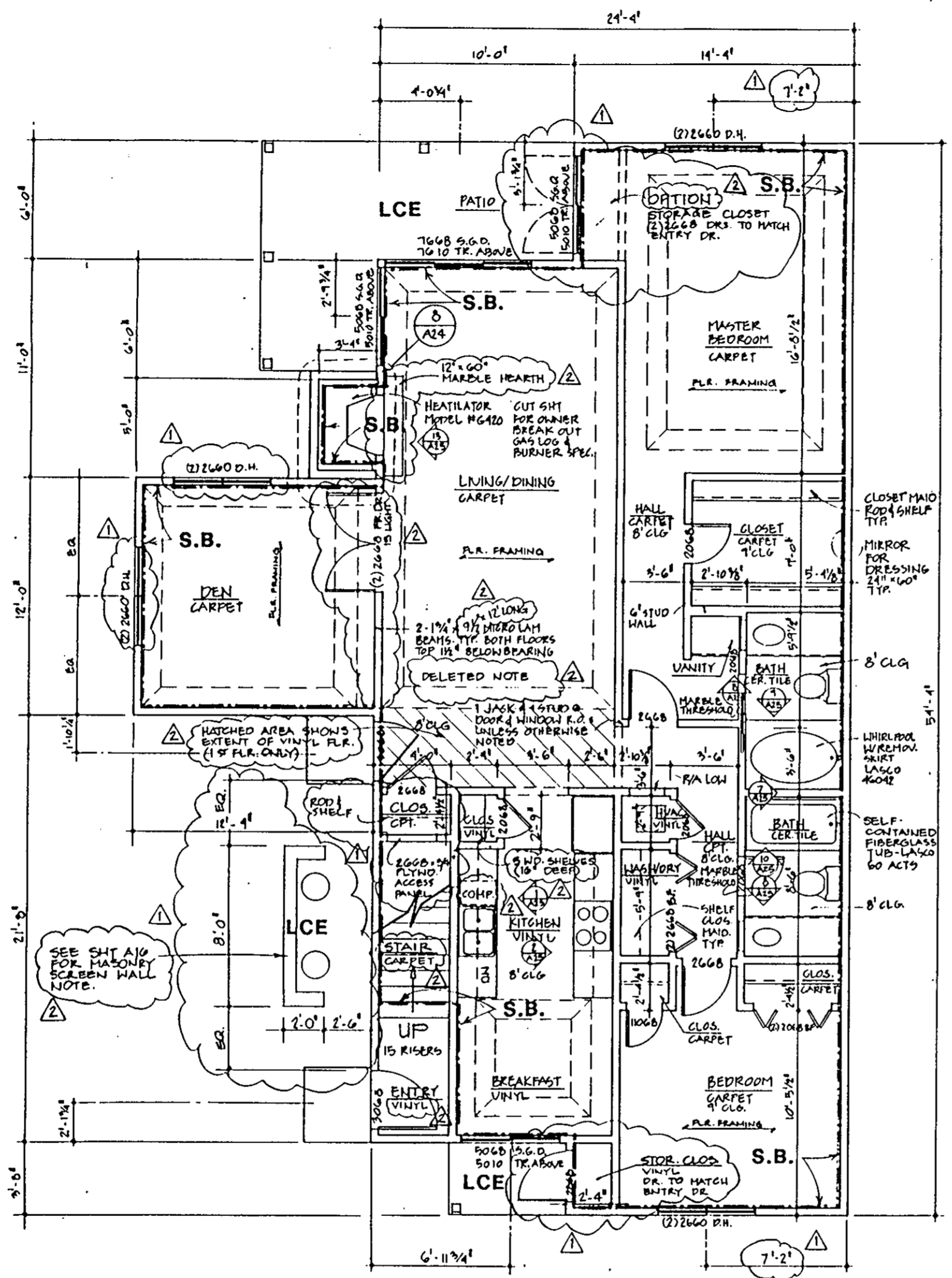


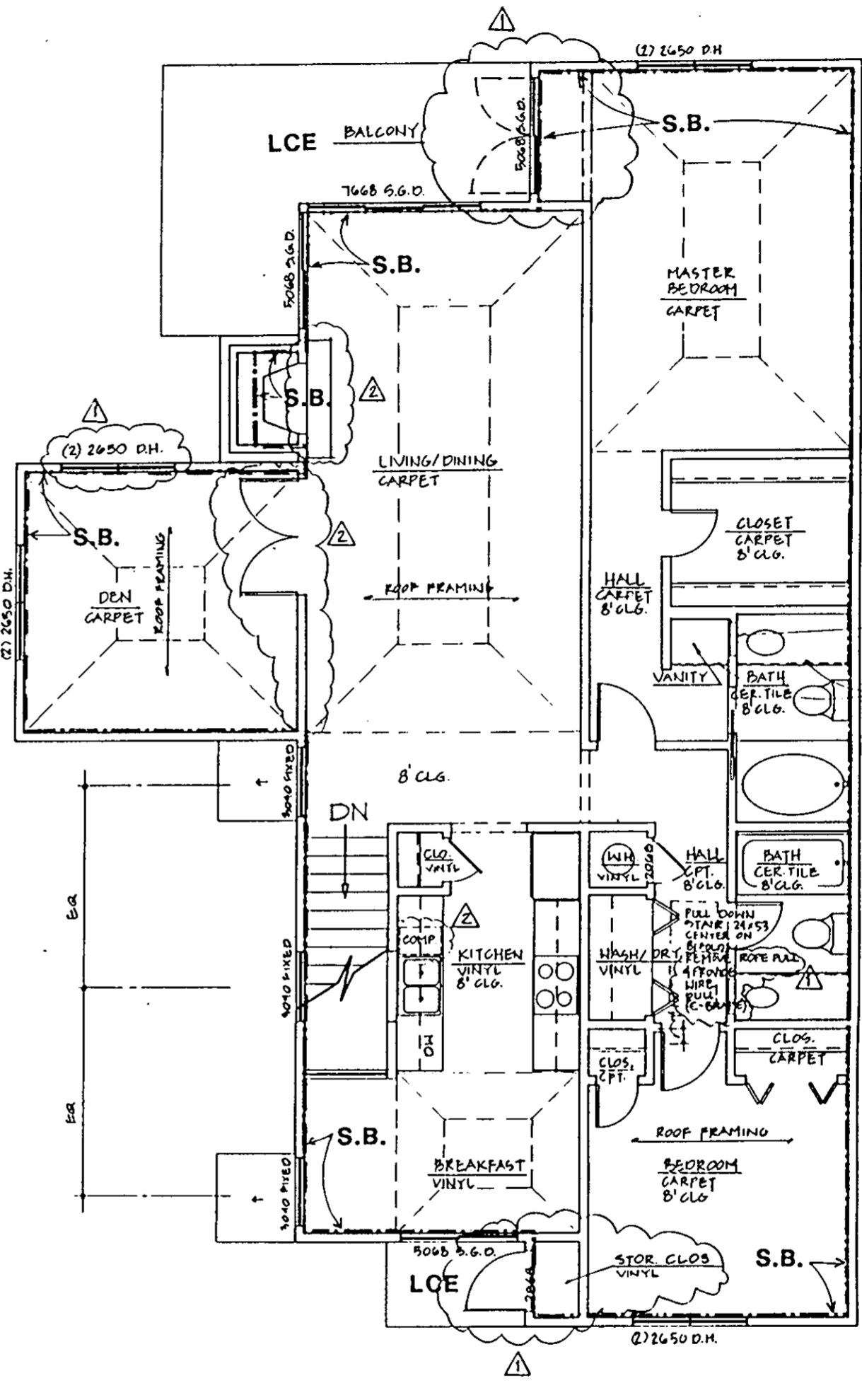
WILLIAMS, TAZEWELL AND ASSOCIATES
 Architecture Engineering Interiors
 Planning Interiors
 710 West 21st Street,
 Norfolk, Virginia 23517

Plat of Condominium
 EAGLE SOUND AT KILN CREEK
 YORK COUNTY, VIRGINIA

EXHIBIT
 A-3
 PHASE
 EIGHT



FIRST FLR PLAN - UNIT "A"
 1/4" = 1'-0"



SECOND FLR PLAN - UNIT "A"
 1/4" = 1'-0"

NOTE:
 UNDER ALL FIBERGLASS
 TUB UNITS PLACE 8 GAL
 OF SPACKLE BELOW TO
 CONTOUR TO TUB PROFILE
 & PROVIDE SUPPORT-TYP.

ARCHITECT'S CERTIFICATE

I hereby certify that this is a correct and accurate plan, that this plan is in compliance with Virginia Code Ann. Subsections 55-79.58 (b) and (e), and that the units depicted hereon have been substantially completed.

Robert A. Magoon Jr., AIA
 Date 10/17/92

Plat Book No. 11 Page 556
 Filed in the Clerk's Office, Circuit Court, York Co., Va.
 the 18th day of December 1992
 Teste: Nancy B. Kane, Clerk
 Karen D. Kelly, Attorney D.C.

LEGEND:
 S.B. - SIDE (PERIMETER) BOUNDARY
 LCE - LIMITED COMMON ELEMENT
 CE - COMMON ELEMENT

NO.	DATE	REVISIONS	BY
1	10/26/91	ADDENDA REVISION	RAM

File Date
 Sheet
 2 OF 5