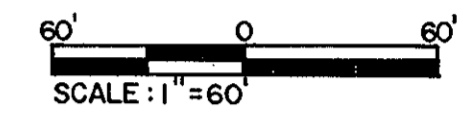


RECORD PLAT
 COVENTRY PLANNED DEVELOPMENT
 LILBURNE MEADOW
 SECTION 4B

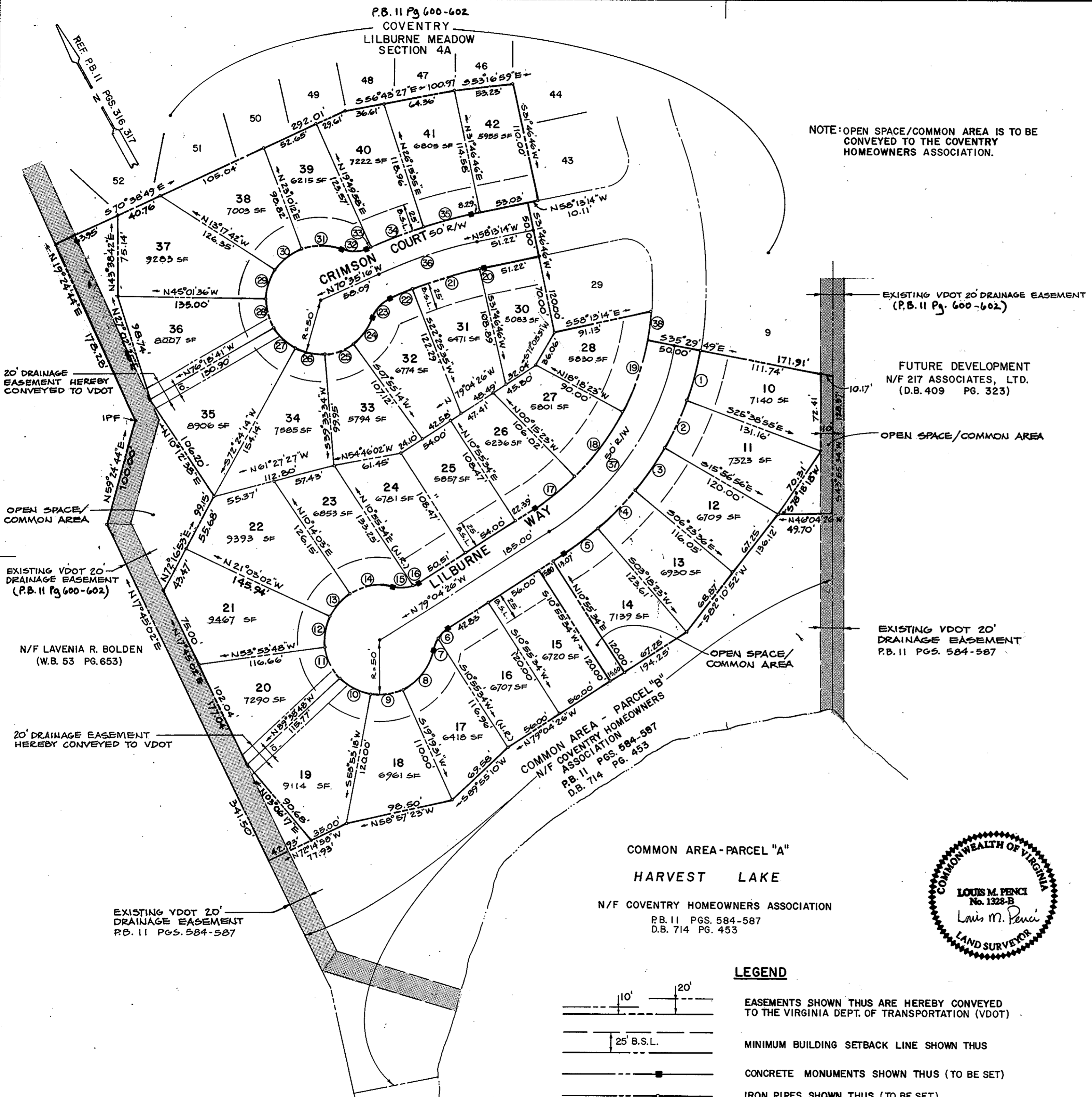
COUNTY OF YORK, VIRGINIA
 LOUIS M. PENCI, Inc.
 863 Catalina Drive
 Newport News, Virginia 23602

SCALE: 1" = 60' MARCH 25, 1993

SHEET 2 OF 2



LOT NO.	LOT AREA (SF)	MAXIMUM LOT COVERAGE	
		1 STORY (LCR=0.30)	2 STORY (LCR=0.25)
10	7,140	2,142	1,785
11	7,323	2,197	1,831
12	6,709	2,013	1,677
13	6,930	2,079	1,733
14	7,139	2,142	1,785
15	6,720	2,016	1,680
16	6,707	2,012	1,677
17	6,418	1,925	1,605
18	6,961	2,088	1,740
19	9,114	2,734	2,279
20	7,290	2,187	1,823
21	9,467	2,840	2,367
22	9,393	2,818	2,348
23	6,853	2,056	1,713
24	6,781	2,034	1,695
25	5,857	1,757	1,464
26	6,236	1,871	1,559
27	5,801	1,740	1,450
28	5,830	1,749	1,458
30	5,083	1,525	1,271
31	6,471	1,941	1,618
32	6,774	2,032	1,694
33	5,794	1,738	1,449
34	7,585	2,276	1,896
35	8,906	2,672	2,227
36	8,007	2,402	2,002
37	9,283	2,785	2,321
38	7,003	2,101	1,751
39	6,215	1,865	1,554
40	7,222	2,167	1,806
41	6,805	2,042	1,701
42	5,955	1,787	1,489



NOTE: OPEN SPACE/Common Area IS TO BE CONVEYED TO THE COVENTRY HOMEOWNERS ASSOCIATION.

EXISTING VDOT 20' DRAINAGE EASEMENT (P.B. 11 Pg. 600-602)

FUTURE DEVELOPMENT N/F 217 ASSOCIATES, LTD. (D.B. 409 PG. 323)

OPEN SPACE/Common Area

EXISTING VDOT 20' DRAINAGE EASEMENT P.B. 11 PGS. 584-587

20' DRAINAGE EASEMENT HEREBY CONVEYED TO VDOT

OPEN SPACE/Common Area

EXISTING VDOT 20' DRAINAGE EASEMENT (P.B. 11 Pg 600-602)

N/F LAVENIA R. BOLDEN (W.B. 53 PG. 653)

20' DRAINAGE EASEMENT HEREBY CONVEYED TO VDOT

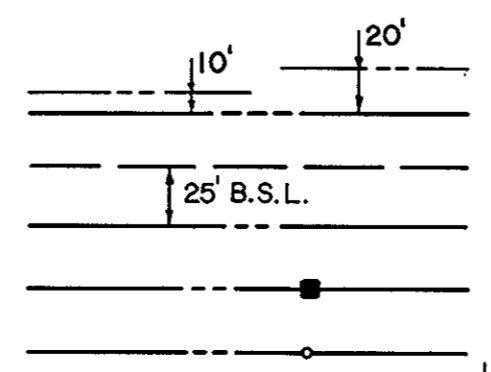
EXISTING VDOT 20' DRAINAGE EASEMENT P.B. 11 PGS. 584-587

COMMON AREA - PARCEL "A"
 HARVEST LAKE

N/F COVENTRY HOMEOWNERS ASSOCIATION
 P.B. 11 PGS. 584-587
 D.B. 714 PG. 453



LEGEND



EASEMENTS SHOWN THUS ARE HEREBY CONVEYED TO THE VIRGINIA DEPT. OF TRANSPORTATION (VDOT)

MINIMUM BUILDING SETBACK LINE SHOWN THUS

CONCRETE MONUMENTS SHOWN THUS (TO BE SET)

IRON PIPES SHOWN THUS (TO BE SET)

APPROVED
 YORK COUNTY BOARD OF SUPERVISORS

By: J. Mark Carter
 PLAT APPROVING AGENT

Date: May 12, 1993

STATE OF VIRGINIA
 COUNTY OF YORK

IN THE CLERK'S OFFICE OF THE CIRCUIT COURT FOR THE COUNTY OF YORK THE 12th DAY OF May 1993
 THIS MAP WAS PRESENTED AND ADMITTED TO RECORD AS THE LAW DIRECTS IN PLAT BOOK 11, PAGE 604

TESTE: NANCY B. KANE, CLERK

BY: Anthony Rando, D.C.
 CLERK