

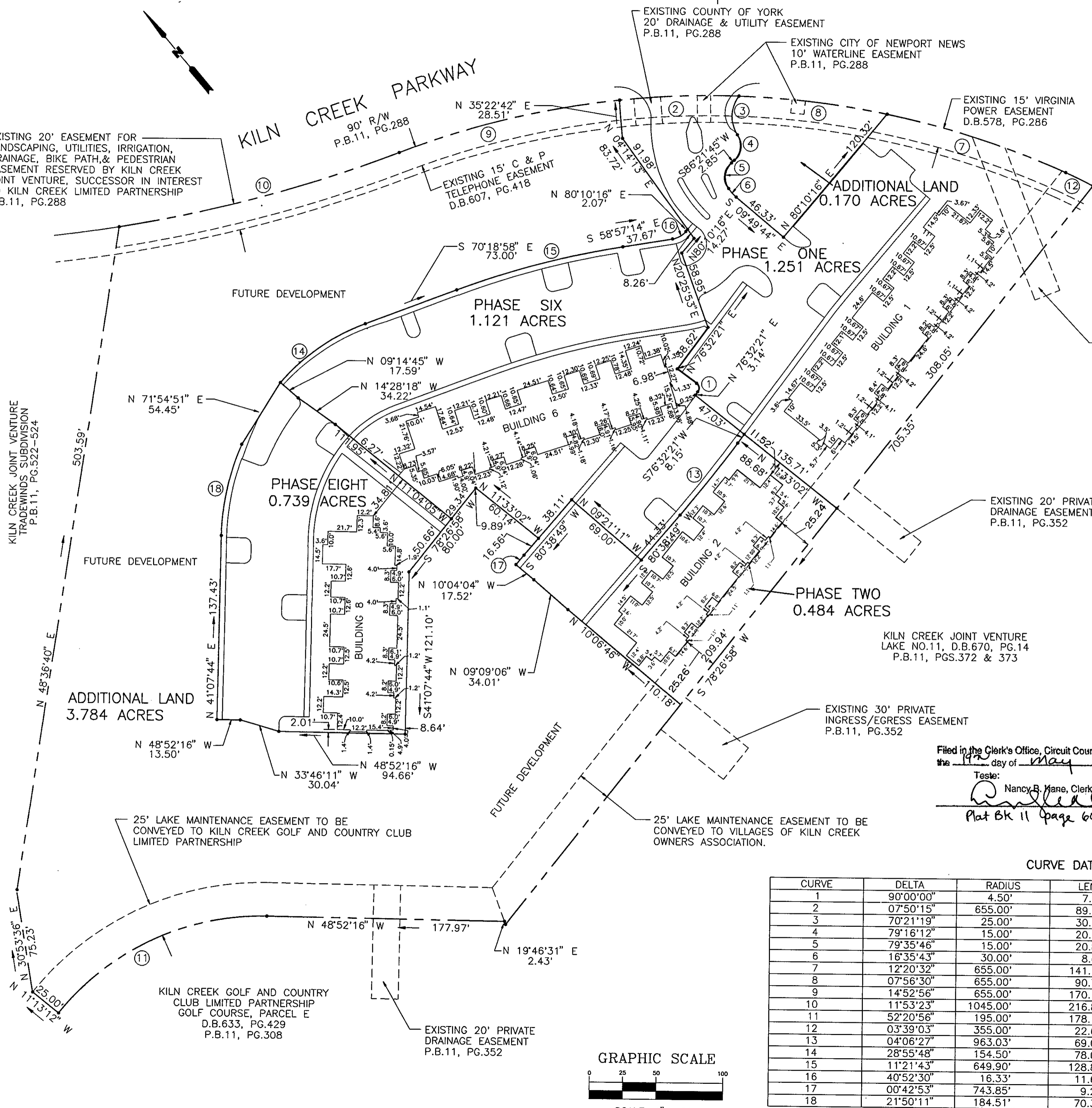
PLAT OF CONDOMINIUM  
**EAGLE SOUND**  
**AT KILN CREEK**  
 A CONDOMINIUM  
 PHASE TWO  
 THE VILLAGES OF KILN CREEK  
 COUNTY OF YORK, VIRGINIA

DATE: DEC.15, 1992    SHEET 2 OF 2    SCALE: 1" = 50'

**SRA**  
**SLEDD, RUNEY & ASSOCIATES, P.C.**  
 ENGINEERS PLANNERS SURVEYORS  
 11832 ROCK LANDING DRIVE, SUITE 203  
 NEWPORT NEWS, VIRGINIA 23606  
 (804) 873-3386

EXHIBIT A-2

EXISTING 20' EASEMENT FOR LANDSCAPING, UTILITIES, IRRIGATION, DRAINAGE, BIKE PATH, & PEDESTRIAN EASEMENT RESERVED BY KILN CREEK JOINT VENTURE, SUCCESSOR IN INTEREST TO KILN CREEK LIMITED PARTNERSHIP P.B.11, PG.288

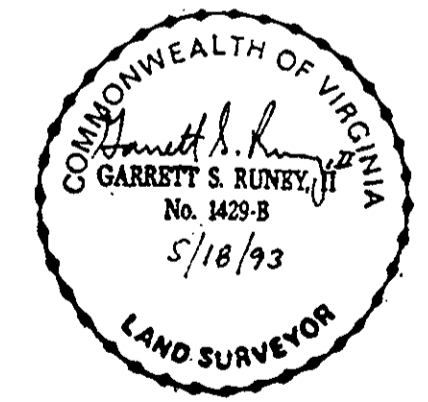


**AREA TABULATIONS**

PHASE 1	1.251 AC.
PHASE 2	0.484 AC.
PHASE 6	1.121 AC.
PHASE 8	0.739 AC.
ADDITIONAL LAND	3.954 AC.
<b>TOTAL AREA OF SITE</b>	<b>7.549 AC.</b>

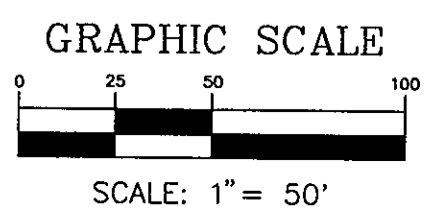
**PARKING TABULATION**  
 153 TOTAL SPACES

Filed in the Clerk's Office, Circuit Court, York Co., Va.  
 the 15 day of May 1993  
 Teste: Nancy B. Mane, Clerk  
*[Signature]*  
 Plat BK 11 page 606 D.C.



CURVE DATA TABLE

CURVE	DELTA	RADIUS	LENGTH	TANGENT	CHORD	BEARING
1	90°00'00"	4.50'	7.07'	4.50'	6.36'	N 31°32'21" E
2	07°50'15"	655.00'	89.60'	44.87'	89.53'	S 52°00'55" E
3	70°21'19"	25.00'	30.70'	17.62'	28.81'	S 42°16'12" W
4	79°16'12"	15.00'	20.75'	12.42'	19.14'	N 46°43'39" E
5	79°35'46"	15.00'	20.84'	12.50'	19.20'	S 46°33'51" W
6	16°35'43"	30.00'	8.69'	4.38'	8.66'	S 01°35'01" E
7	12°20'32"	655.00'	141.10'	70.82'	140.82'	N 32°07'27" W
8	07°56'30"	655.00'	90.79'	45.47'	90.72'	N 42°15'58" W
9	14°52'56"	655.00'	170.13'	85.55'	169.65'	N 63°22'30" W
10	11°53'23"	1045.00'	216.85'	108.82'	216.46'	S 64°52'16" E
11	52°20'56"	195.00'	178.16'	95.84'	172.03'	N 75°02'44" W
12	03°39'03"	355.00'	22.62'	11.31'	22.62'	S 24°07'40" E
13	04°06'27"	963.03'	69.04'	34.54'	69.03'	N 78°35'35" E
14	28°55'48"	154.50'	78.01'	39.86'	77.18'	N 84°46'51" W
15	11°21'43"	649.90'	128.88'	64.65'	128.67'	N 64°38'06" W
16	40°52'30"	16.33'	11.65'	6.09'	11.41'	S 79°23'29" E
17	00°42'53"	743.85'	9.28'	4.64'	9.28'	N 80°17'22" E
18	21°50'11"	184.51'	70.32'	35.59'	69.89'	N 52°29'43" E



25' LAKE MAINTENANCE EASEMENT TO BE CONVEYED TO KILN CREEK GOLF AND COUNTRY CLUB LIMITED PARTNERSHIP

25' LAKE MAINTENANCE EASEMENT TO BE CONVEYED TO VILLAGES OF KILN CREEK OWNERS ASSOCIATION.

KILN CREEK GOLF AND COUNTRY CLUB LIMITED PARTNERSHIP GOLF COURSE, PARCEL E D.B.633, PG.429 P.B.11, PG.308

EXISTING 20' PRIVATE DRAINAGE EASEMENT P.B.11, PG.352