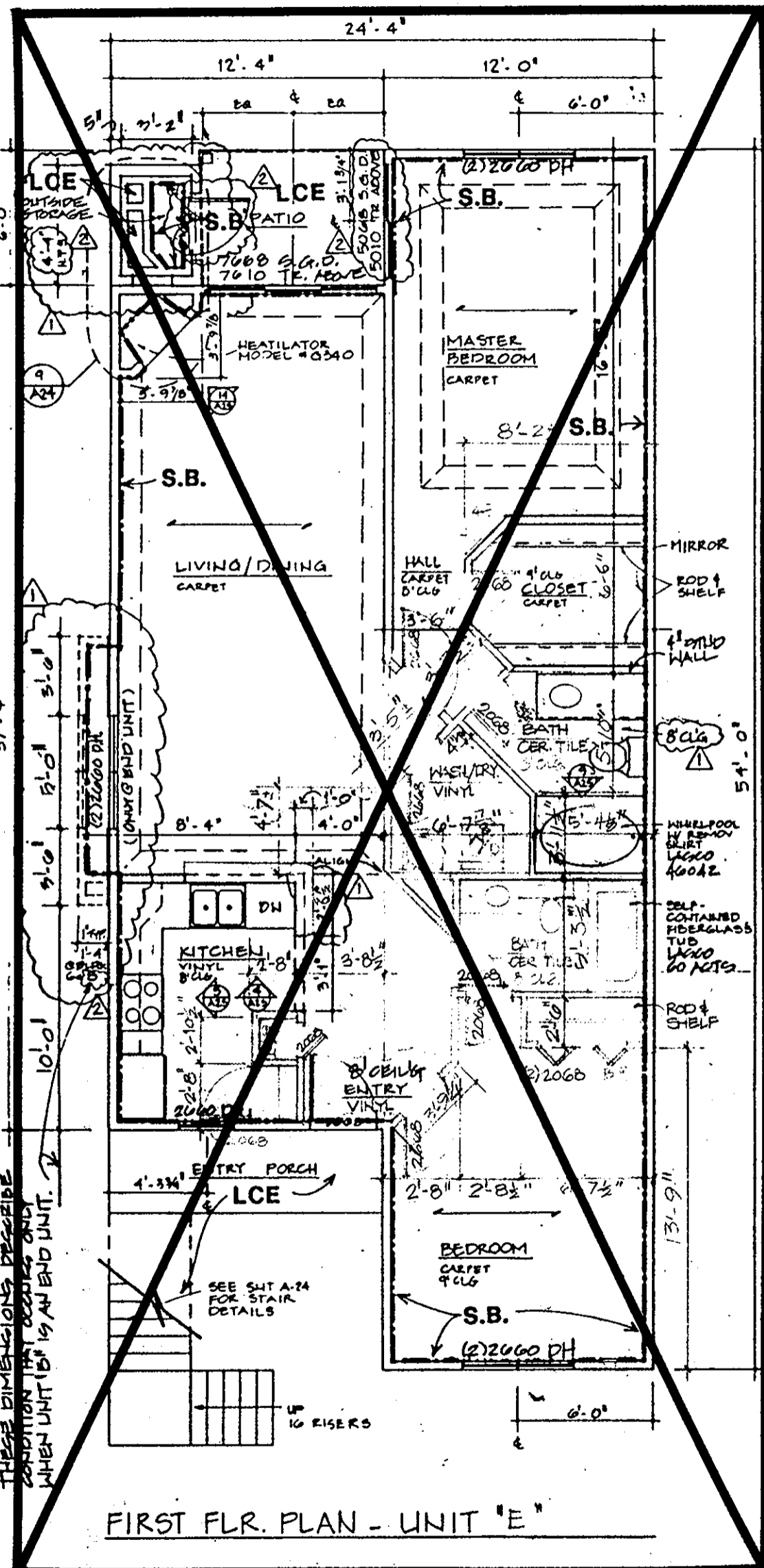
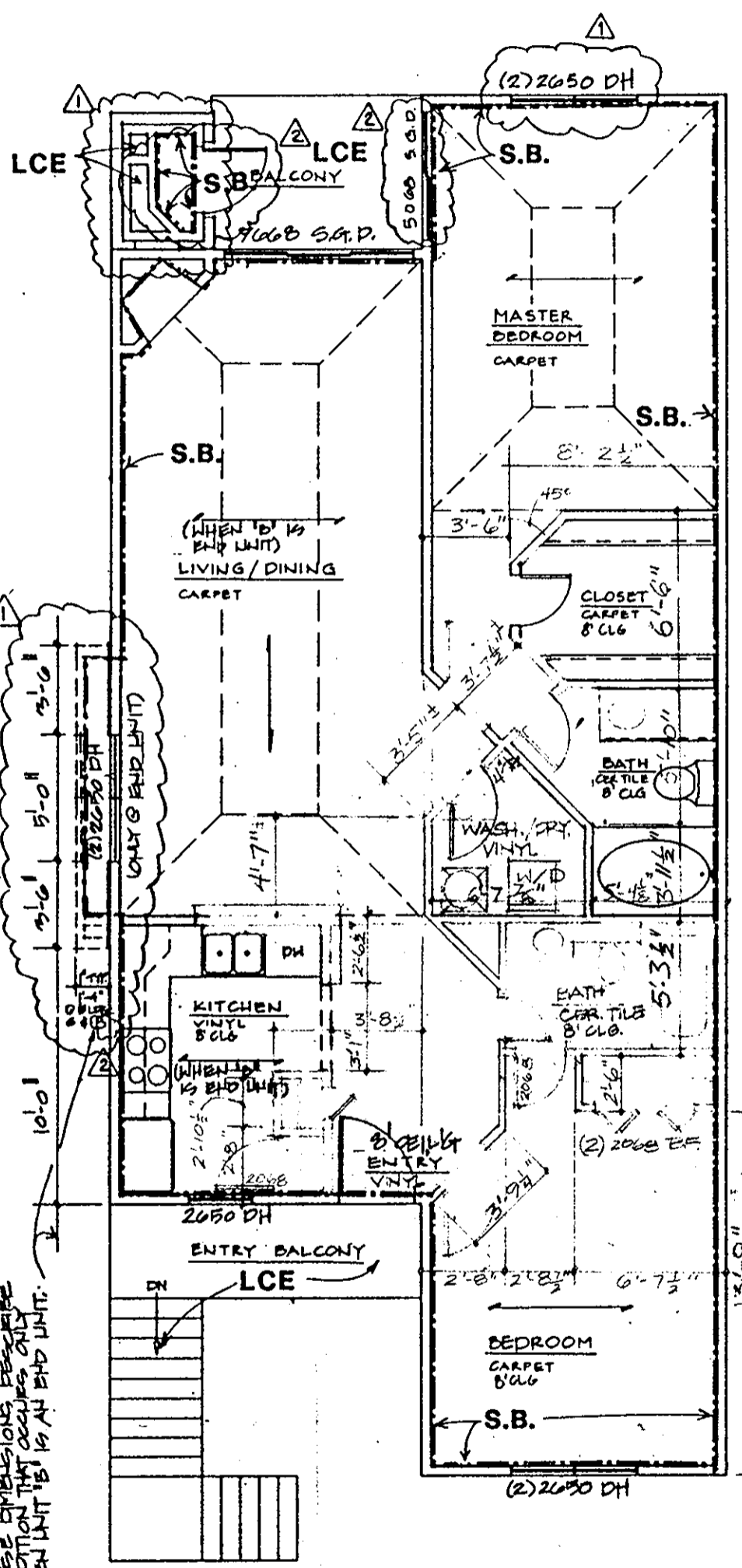


Plat Book No. 11 Page 648
 Filed in the Clerk's Office, Circuit Court, York Co., Va.
 the 20 day of August 1993
 Teste: Nancy B. Kare, Clerk
Rachael R. Dargatzis D.C.

NOT IN PHASE SEVEN

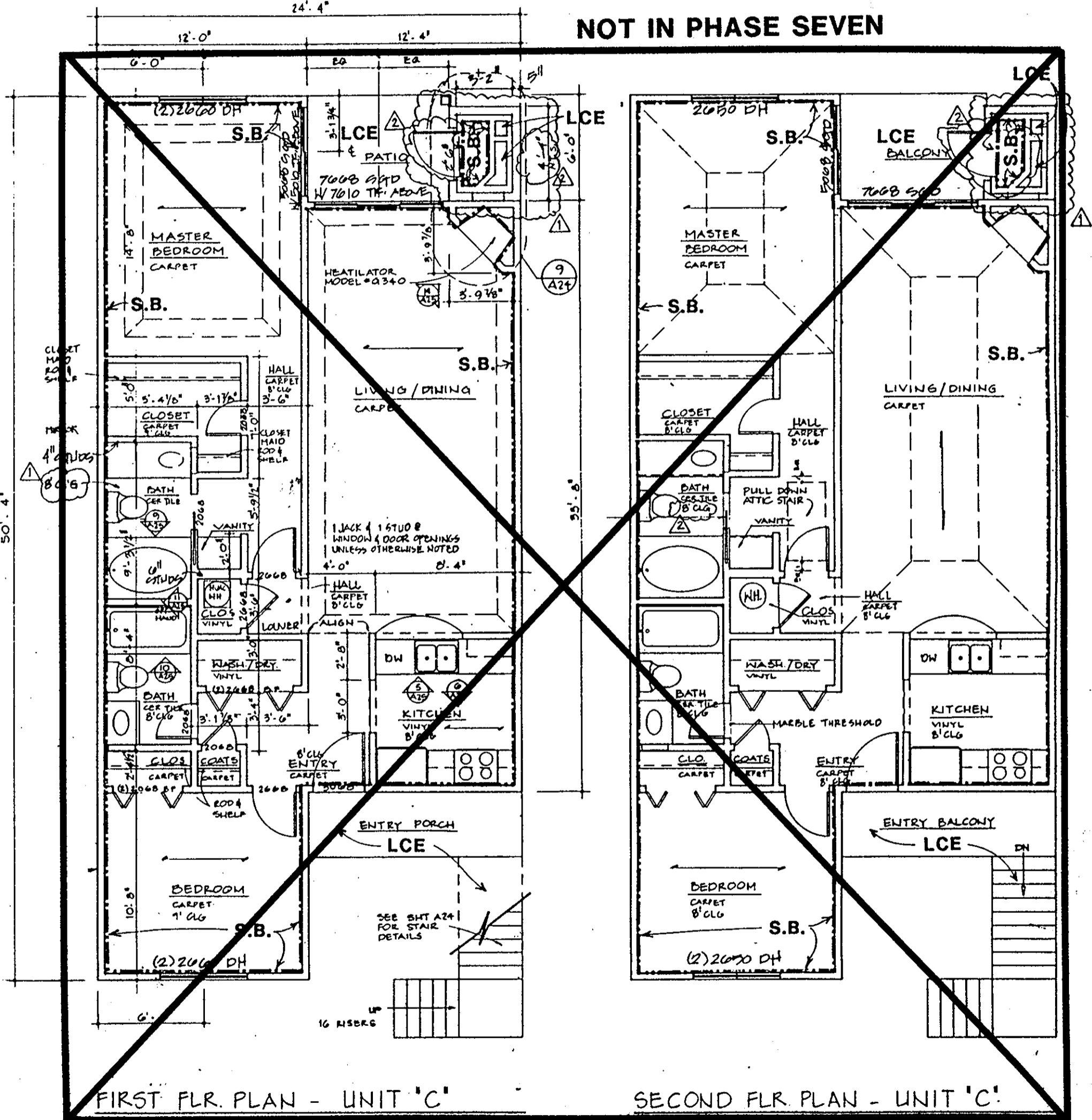


FIRST FLR. PLAN - UNIT 'E'



SECOND FLR. PLAN - UNIT 'E'

NOT IN PHASE SEVEN



FIRST FLR. PLAN - UNIT 'C'

SECOND FLR. PLAN - UNIT 'C'

ARCHITECT'S CERTIFICATE

I hereby certify that this is a correct and accurate plan, that this plan is in compliance with Virginia Code Ann. Subsections 55-78.58 (b) and (e), and that the units depicted hereon have been substantially completed.

Robert A. Magoon Jr., AIA
 Date 8/18/93

LEGEND:
 S.B. - SIDE (PERIMETER) BOUNDARY
 LCE - LIMITED COMMON ELEMENT
 CE - COMMON ELEMENT

NO	DATE	REVISIONS	BY
1	10/26/91	ADDENDA	

WILLIAMS, TAZEWELL AND ASSOCIATES
 Architecture Engineering Planning Interiors
 710 West 21st Street, Norfolk, Virginia 23517

Plat of Condominium
 EAGLE SOUND AT KILN CREEK
 YORK COUNTY, VIRGINIA

EXHIBIT A-3
 PHASE SEVEN

File 9146.01A
 Date
 Sheet 3 OF 7