

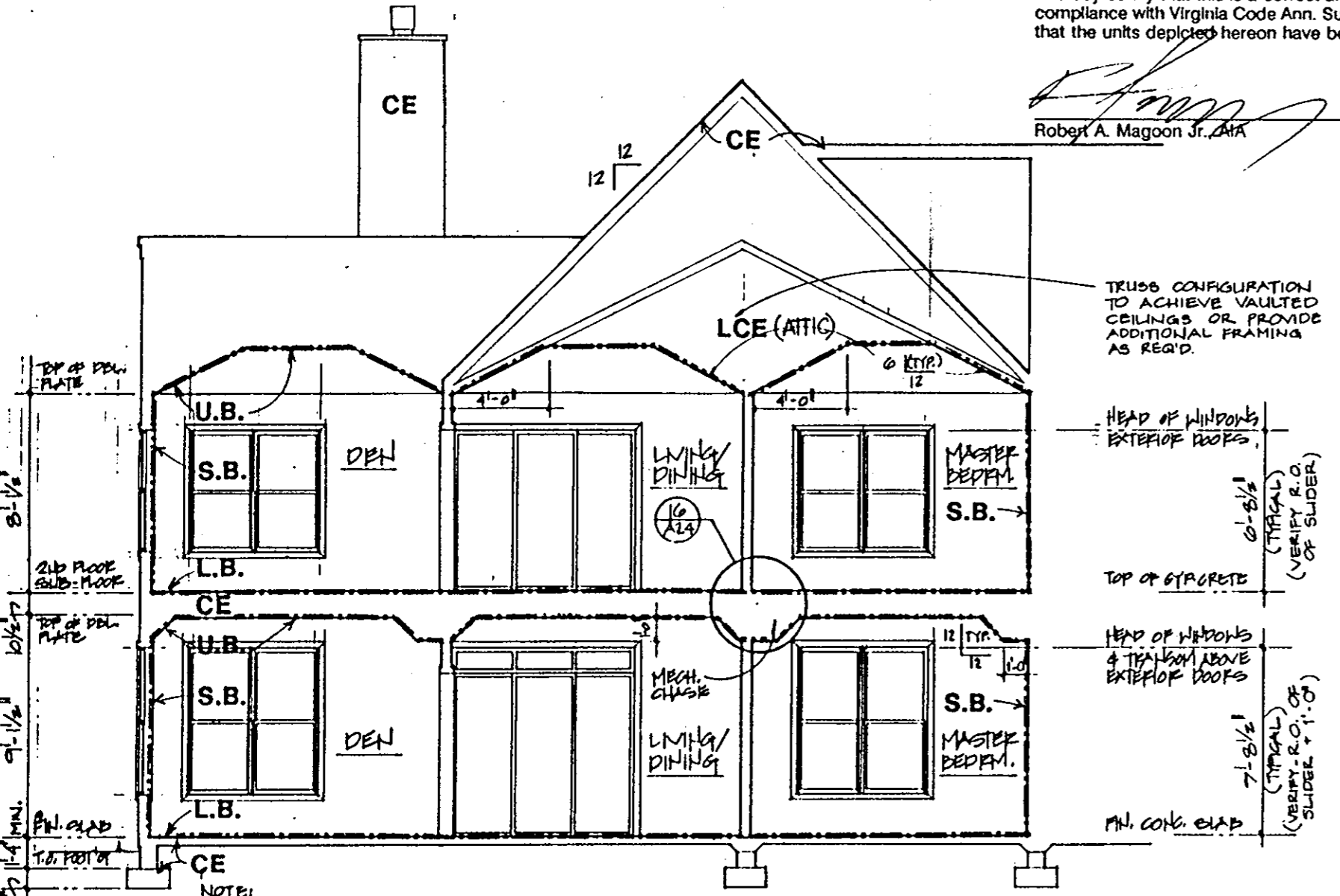
Plat Book No. 11 Page 651
 Filed in the Clerk's Office, Circuit Court, York Co., Va.
 the 21 day of August, 1992
 Testa: Nancy B. Kana, Clerk
Rachael R. Daniels D.C.

651

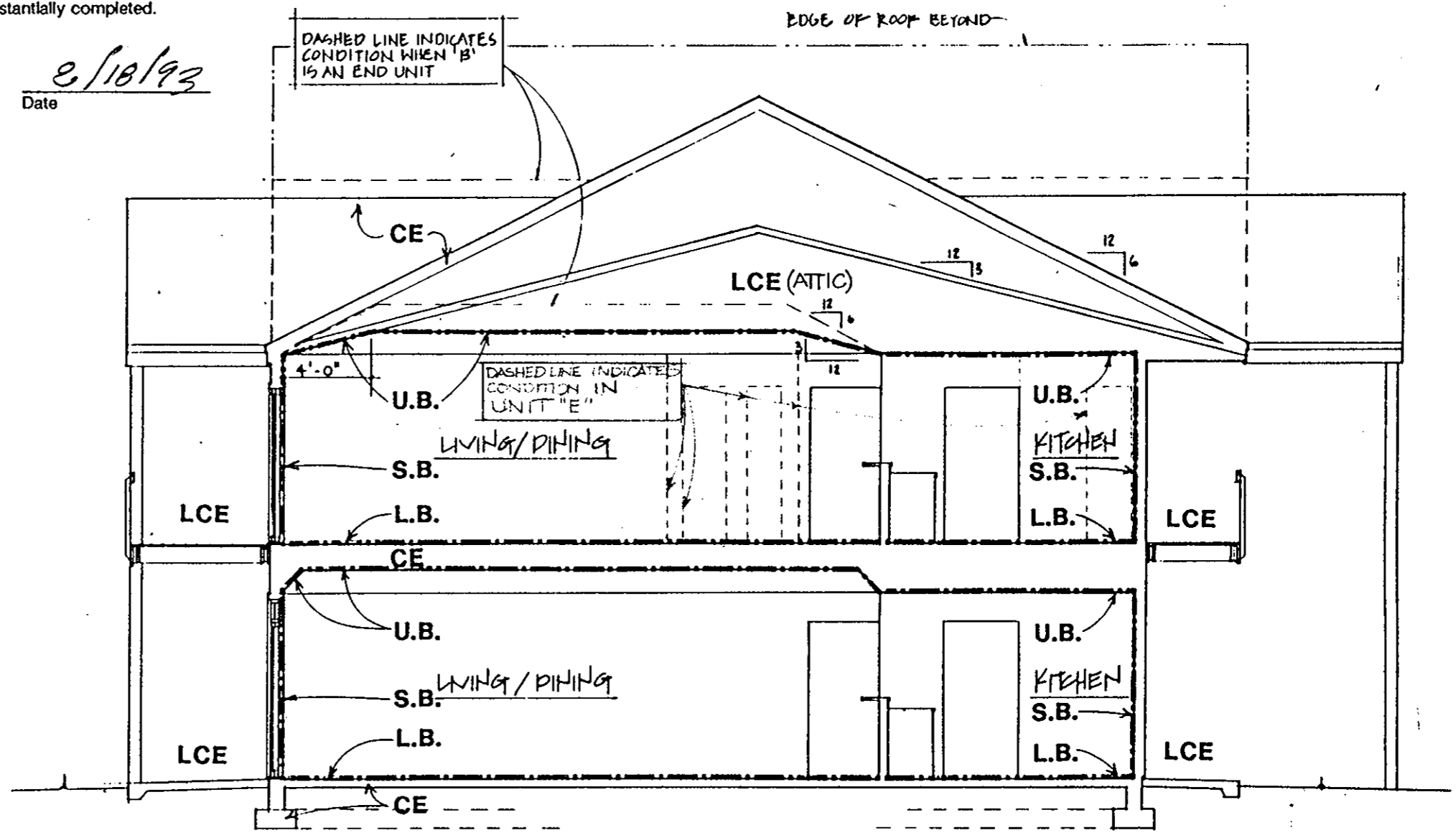
ARCHITECT'S CERTIFICATE

I hereby certify that this is a correct and accurate plan, that this plan is in compliance with Virginia Code Ann. Subsections 55-79.58 (b) and (e), and that the units depicted hereon have been substantially completed.

Robert A. Magoon Jr., AIA
 Date 8/18/92

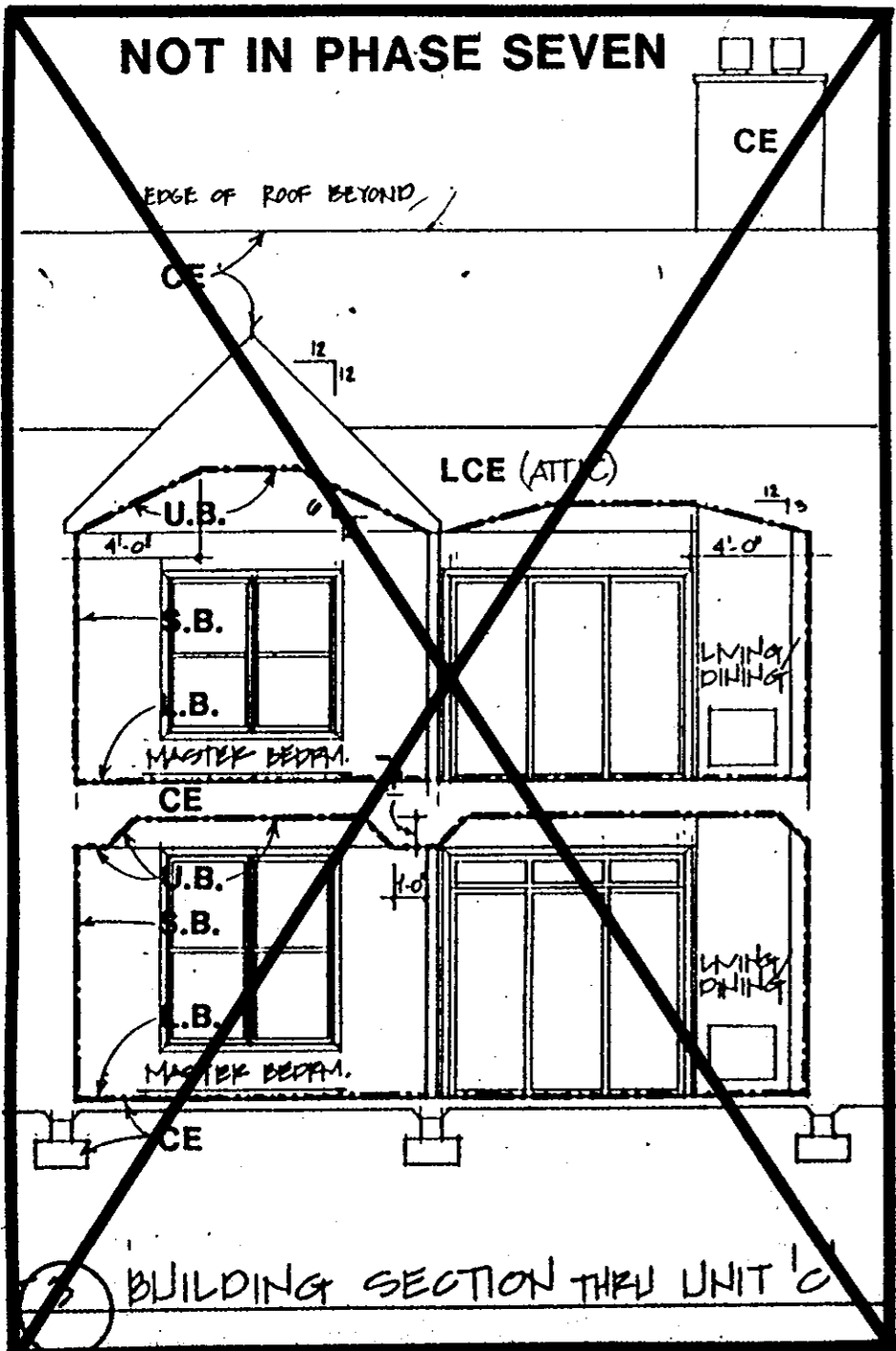


1 BUILDING SECTION THRU UNIT 'A'

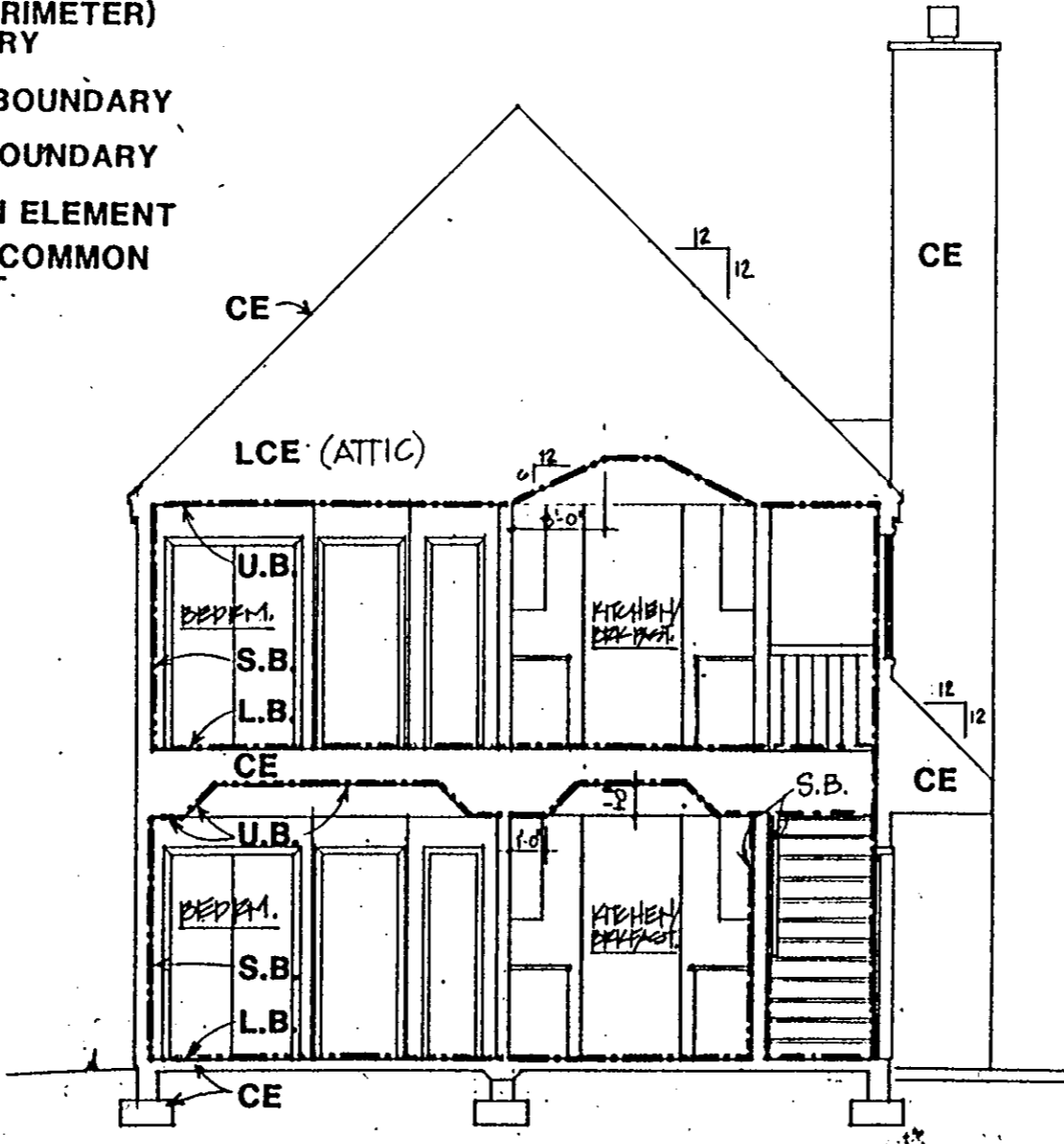


2 BUILDING SECTION THRU UNIT 'B' & UNIT 'E'

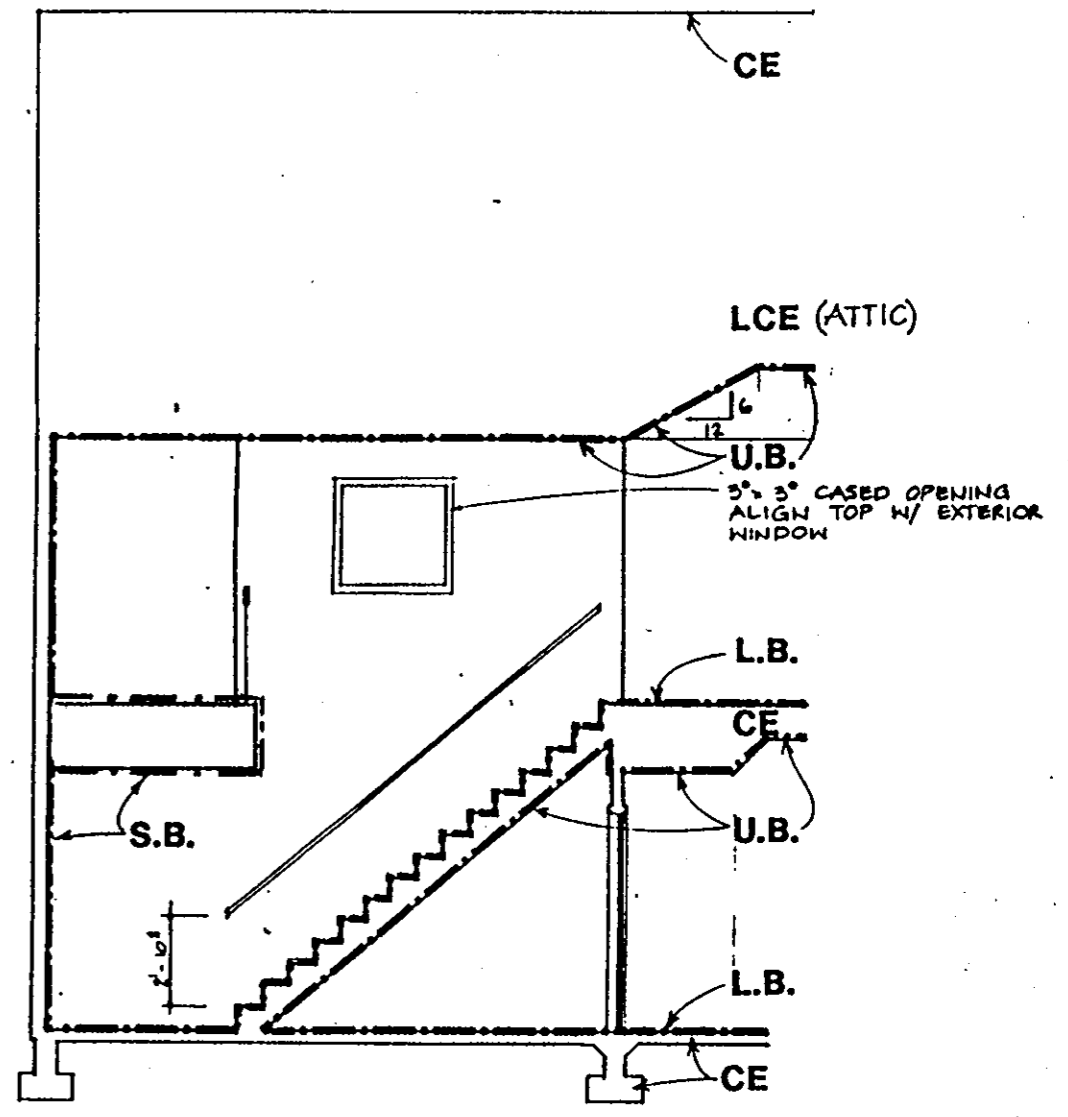
- LEGEND:
- S.B. - SIDE (PERIMETER) BOUNDARY
 - L.B. - LOWER BOUNDARY
 - U.B. - UPPER BOUNDARY
 - CE - COMMON ELEMENT
 - LCE - LIMITED COMMON ELEMENT



3 BUILDING SECTION THRU UNIT 'C'



4 BUILDING SECTION THRU UNIT 'D'



5 BUILDING SECTION THRU UNIT 'D'

NO	DATE	REVISIONS	BY

WILLIAMS, TAZEWELL AND ASSOCIATES
 Architecture Engineering Planning Interiors
 710 West 21st Street,
 Norfolk, Virginia 23517

Plat of Condominium
 EAGLE SOUND AT KILN CREEK
 YORK COUNTY, VIRGINIA

EXHIBIT
 A-3
 PHASE SEVEN

File
 Date
 Sheet
 6 OF 7