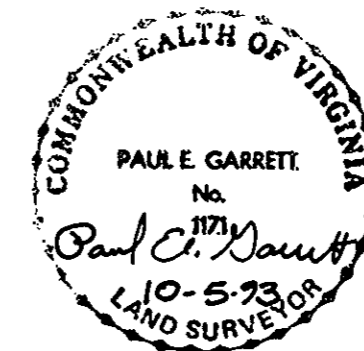


INSERT
1"=50'

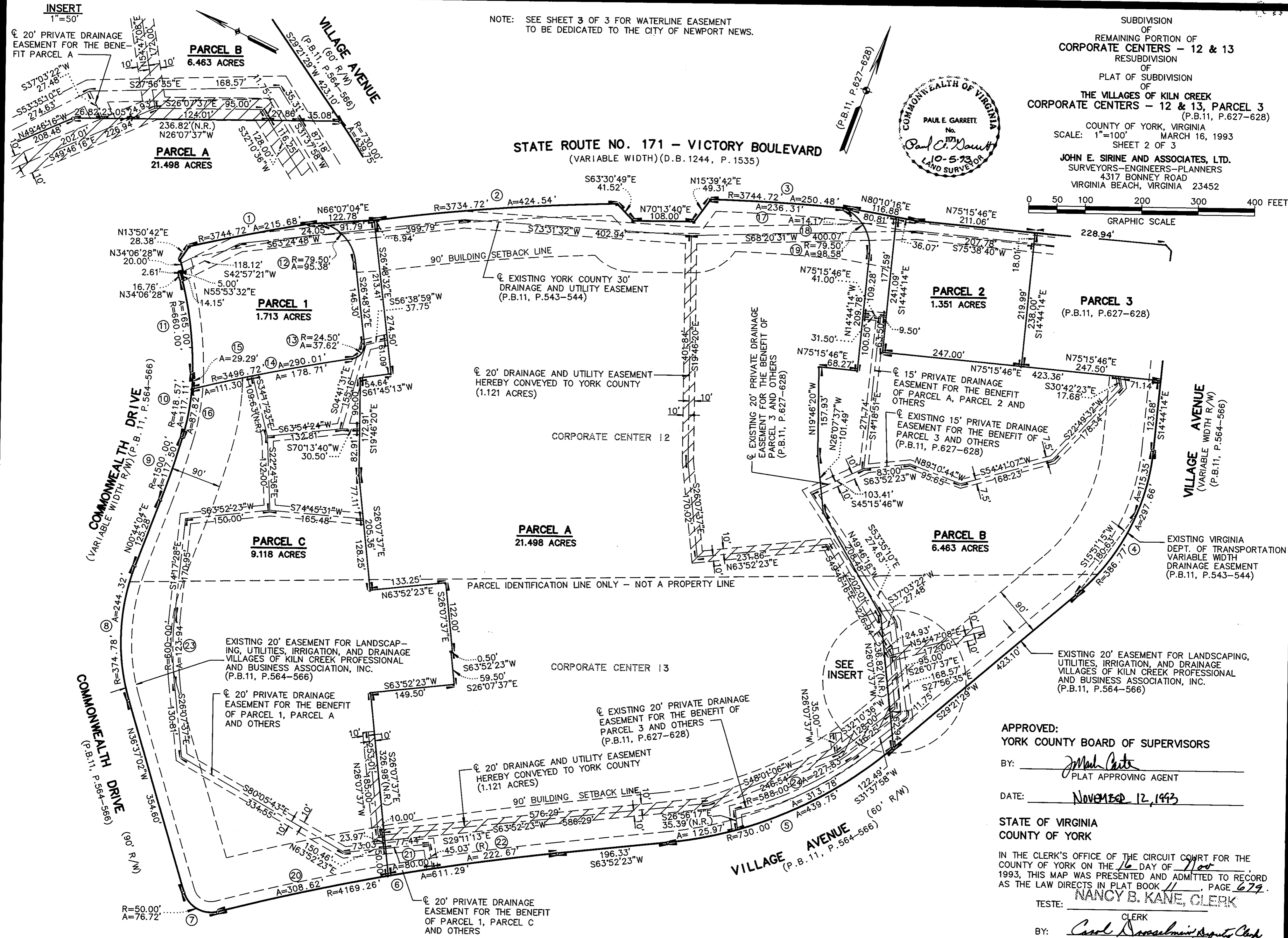
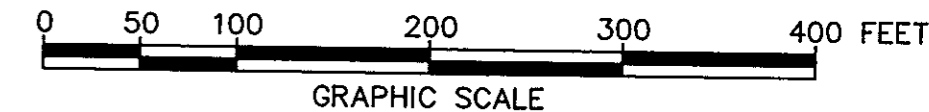
NOTE: SEE SHEET 3 OF 3 FOR WATERLINE EASEMENT
TO BE DEDICATED TO THE CITY OF NEWPORT NEWS.

SUBDIVISION
OF
REMAINING PORTION OF
CORPORATE CENTERS - 12 & 13
RESUBDIVISION
OF
PLAT OF SUBDIVISION
OF
**THE VILLAGES OF KILN CREEK
CORPORATE CENTERS - 12 & 13, PARCEL 3**
(P.B.11, P.627-628)
COUNTY OF YORK, VIRGINIA
SCALE: 1"=100' MARCH 16, 1993
SHEET 2 OF 3

JOHN E. SIRINE AND ASSOCIATES, LTD.
SURVEYORS-ENGINEERS-PLANNERS
4317 BONNEY ROAD
VIRGINIA BEACH, VIRGINIA 23452



STATE ROUTE NO. 171 - VICTORY BOULEVARD
(VARIABLE WIDTH) (D.B. 1244, P. 1535)



APPROVED:
YORK COUNTY BOARD OF SUPERVISORS

BY: *John M. Carter*
PLAT APPROVING AGENT

DATE: NOVEMBER 12, 1993

STATE OF VIRGINIA
COUNTY OF YORK

IN THE CLERK'S OFFICE OF THE CIRCUIT COURT FOR THE
COUNTY OF YORK ON THE 16 DAY OF Nov
1993, THIS MAP WAS PRESENTED AND ADMITTED TO RECORD
AS THE LAW DIRECTS IN PLAT BOOK 11, PAGE 679.

TESTE: **NANCY B. KANE, CLERK**

BY: *Carol Drosselmeier, Deputy Clerk*