

Plat Book No. 11 Page 698

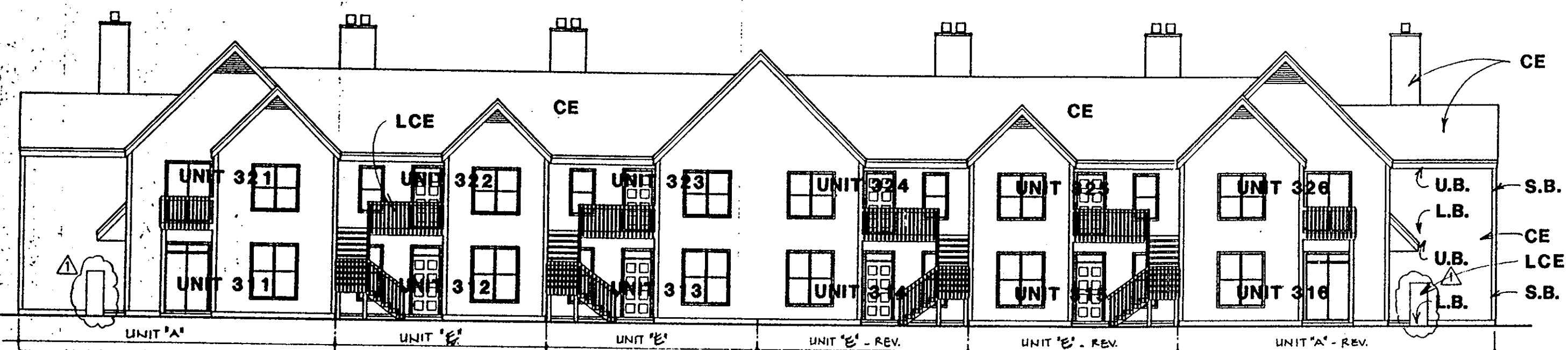
Filed in the Clerk's Office, Circuit Court, York Co., Va. on the 28 day of December 19 91

Teste: Nancy B. Kane, Clerk
 Carl S. ...

ARCHITECT'S CERTIFICATE
 I hereby certify that this is a correct and accurate plan that this plan is in compliance with Virginia Code Ann. Subsections 55-79.58 (b) and (c) and that the units depicted herein have been substantially completed.

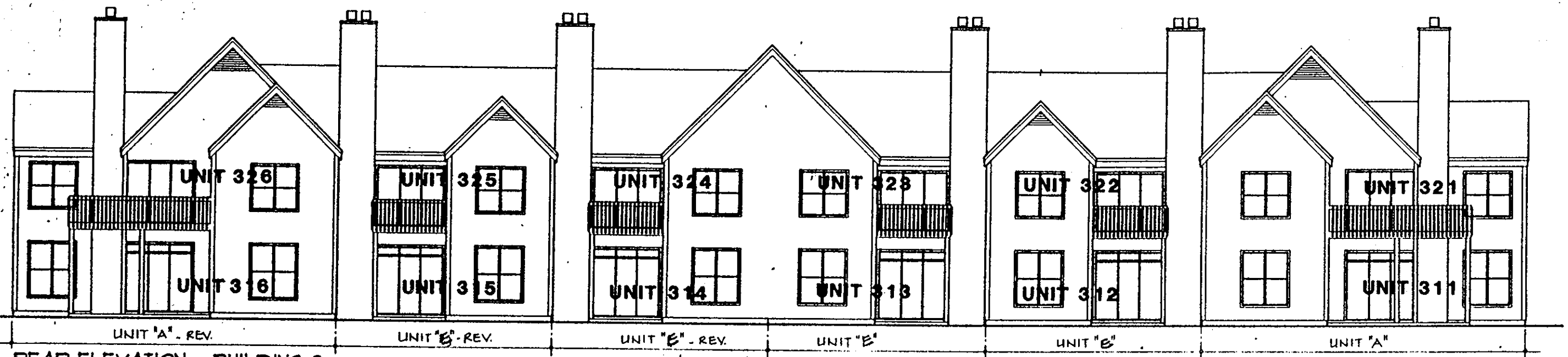
Robert A. Magoon, P.E., AIA
 Date

WILLIAMS, TAZEWELL AND ASSOCIATES
 Architecture, Engineering, Planning, Interiors
 710 West 21st Street, Norfolk, Virginia 23517



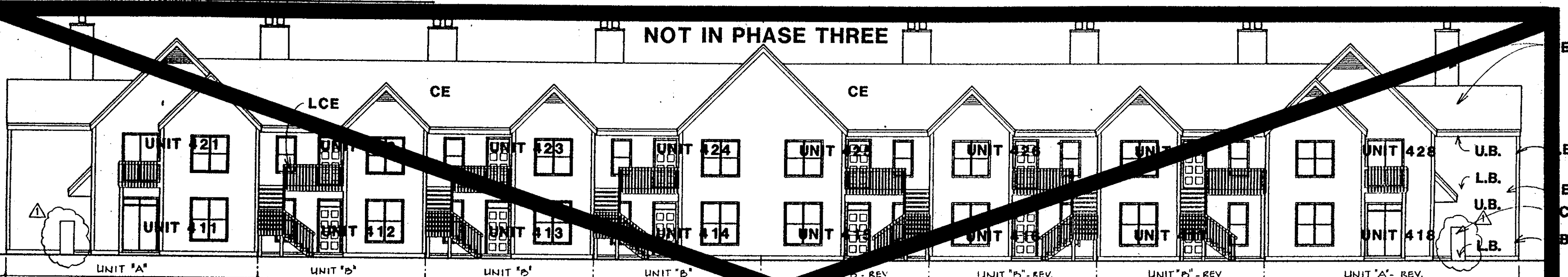
FRONT ELEVATION - BUILDING 3

NOTE: BOUNDARY AND COMMON ELEMENT DESIGNATIONS SHOWN FOR BUILDING 3 ARE TYPICAL FOR ALL ELEVATIONS



REAR ELEVATION - BUILDING 3

- LEGEND:
 S.B. - SIDE (PERIMETER) BOUNDARY
 L.B. - LOWER BOUNDARY
 U.B. - UPPER BOUNDARY
 CE - COMMON ELEMENT
 LCE - LIMITED COMMON ELEMENT



FRONT ELEVATION - BUILDING 4

NOTE: BOUNDARY AND COMMON ELEMENT DESIGNATIONS SHOWN FOR BUILDING 4 ARE TYPICAL FOR ALL ELEVATIONS



REAR ELEVATION - BUILDING 4

Plat of Condominium
 EAGLE SOUND AT KIILN CREEK
 YORK COUNTY VIRGINIA

EXHIBIT A-3
 PHASE THREE

File 914601A
 Date 10 OCT 1991
 Sheet 1 of 5

12/6/91	REVISION	10/26/91	ADDENDA	RAM
		NO. DATE	REVISIONS	BY