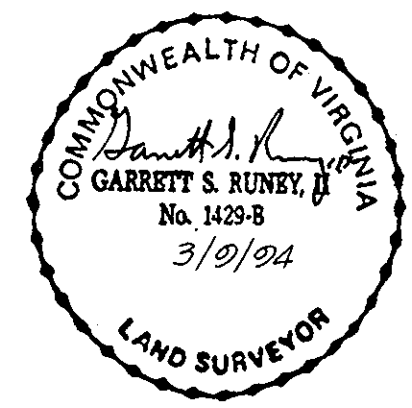
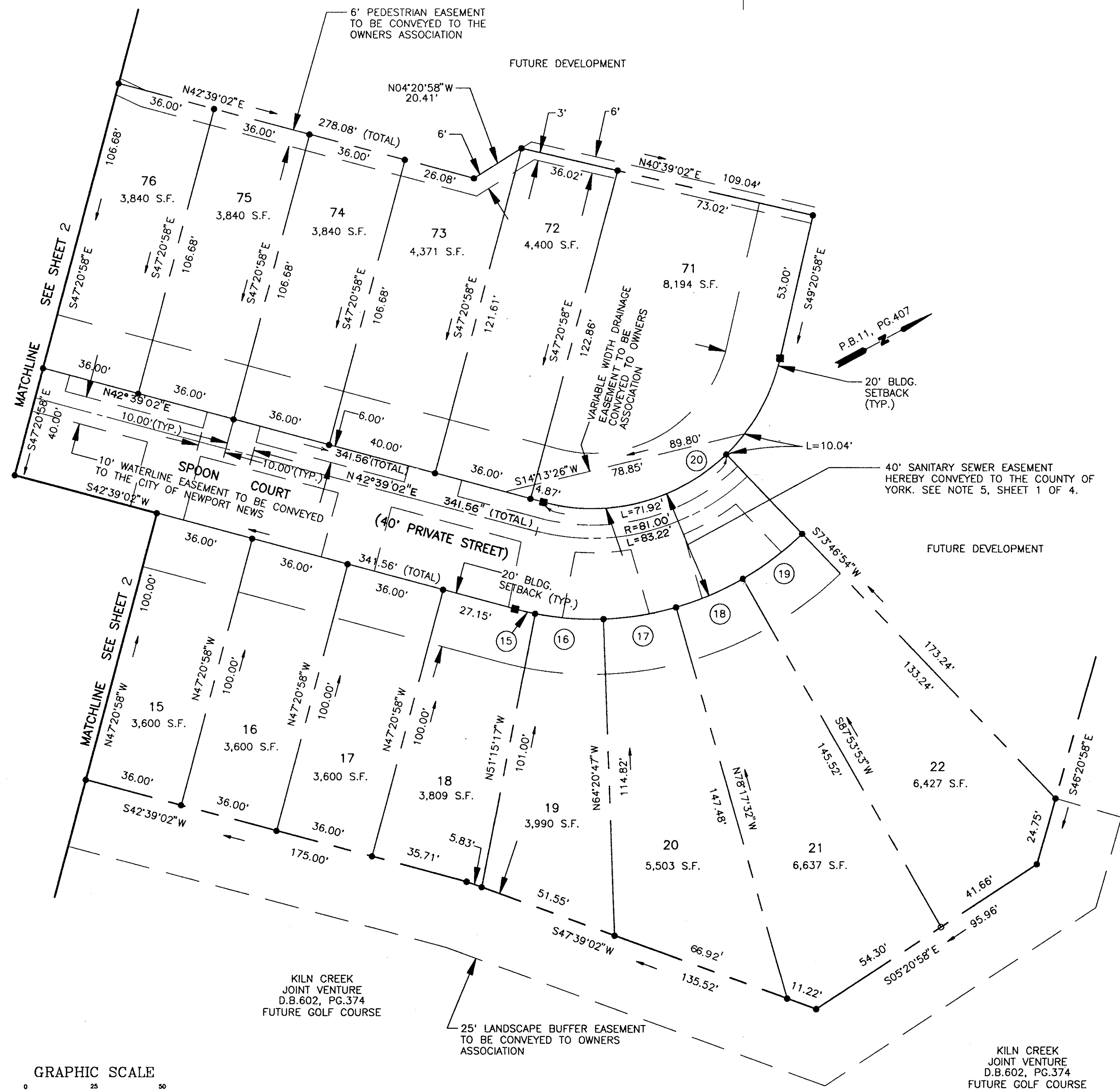


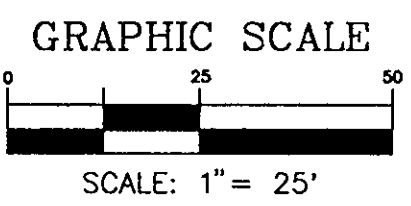
WATERLINE EASEMENT PLAT
OF
**THE SANCTUARY
AT KILN CREEK**
SECTION ONE
SINGLE FAMILY ATTACHED 1
YORK COUNTY, VIRGINIA

DATE: MARCH 9, 1994 SHEET 3 OF 3 SCALE: 1" = 25'

SRA SLEDD, RUNEY & ASSOCIATES, P.C.
ENGINEERS PLANNERS SURVEYORS
11832 ROCK LANDING DRIVE, SUITE 203
NEWPORT NEWS, VIRGINIA 23606
(804) 873-3386



KILN CREEK
JOINT VENTURE
D.B.602, PG.374
FUTURE GOLF COURSE



Plat Book No. 12 Page 64

Filed in the Clerk's Office, Circuit Court, York Co., Va.
the 3 day of June 1994

Teste:
Nancy B. Kane, Clerk
Barna... DC

KILN CREEK
JOINT VENTURE
D.B.602, PG.374
FUTURE GOLF COURSE