

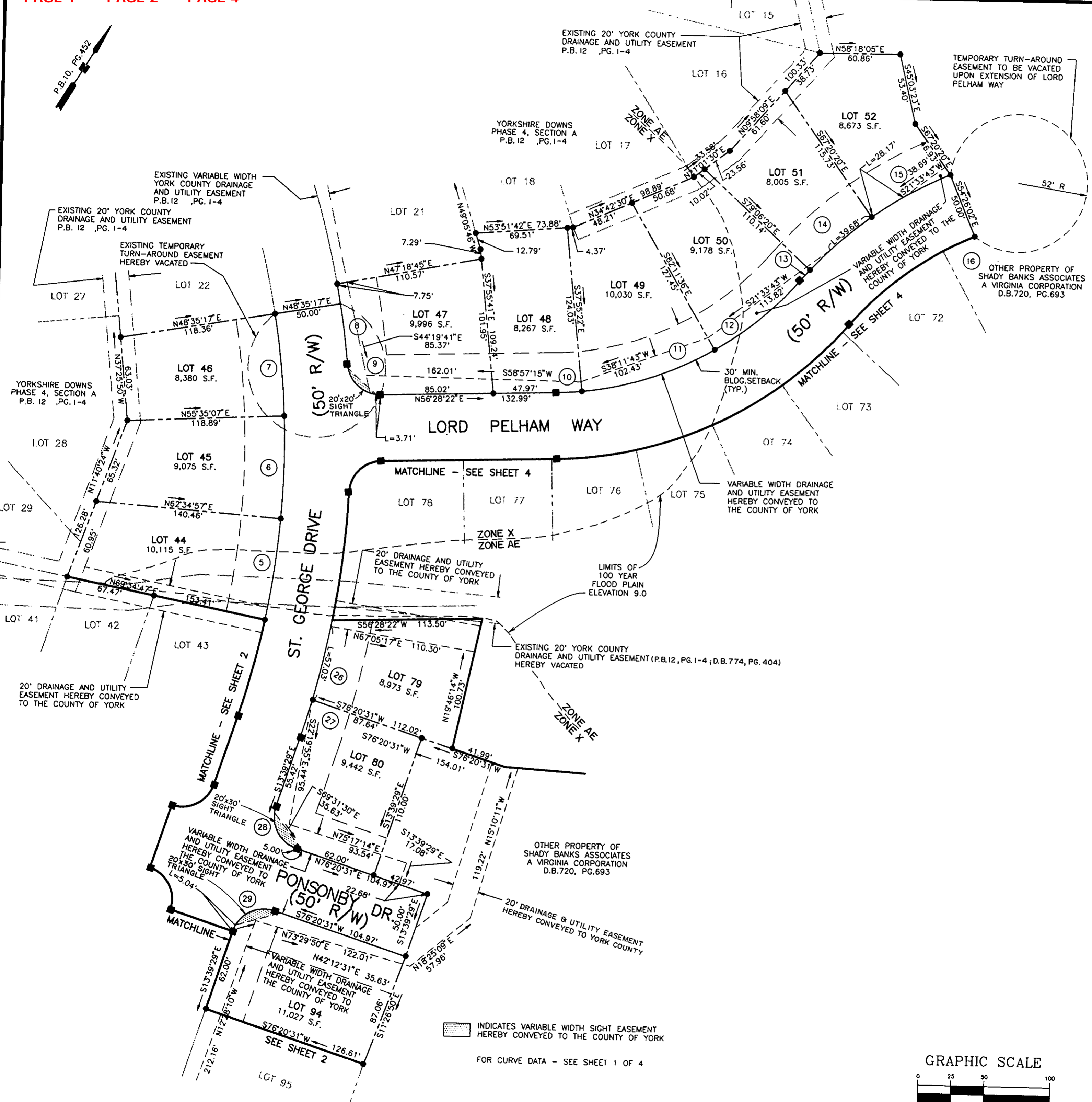
YORKSHIRE DOWNS PHASE 4

SECTION B

COUNTY OF YORK, VIRGINIA

DATE: 15 DEC.1993 SHEET 3 OF 4 SCALE: 1"=50'

SRA SLEDD, RONEY & ASSOCIATES, P.C.
ENGINEERS PLANNERS SURVEYORS
11832 ROCK LANDING DRIVE, SUITE 203
NEWPORT NEWS, VIRGINIA 23606
(804) 873-3386

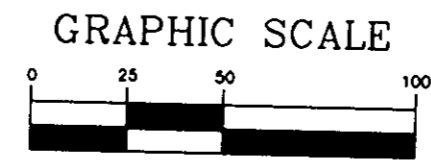


APPROVED:
 YORK COUNTY BOARD OF SUPERVISORS
 BY: *J. Paul Cook*
 PLAT APPROVING AGENT
 DATE: JUNE 17, 1994

STATE OF VIRGINIA
 COUNTY OF YORK

IN THE CLERK'S OFFICE OF THE CIRCUIT COURT FOR THE COUNTY OF YORK, THE 21 DAY OF JUNE, 1994.
 THIS MAP WAS PRESENTED AND ADMITTED TO RECORD AS THE LAW DIRECTS IN PLAT BOOK 12, PAGE 74.

TESTE: NANCY B. KANE
 CLERK
 BY: *Rachael R. Dumas*



INDICATES VARIABLE WIDTH SIGHT EASEMENT HEREBY CONVEYED TO THE COUNTY OF YORK
 FOR CURVE DATA - SEE SHEET 1 OF 4