

PLAT OF SUBDIVISION YORKSHIRE DOWNS PHASE 4 SECTION B

COUNTY OF YORK, VIRGINIA

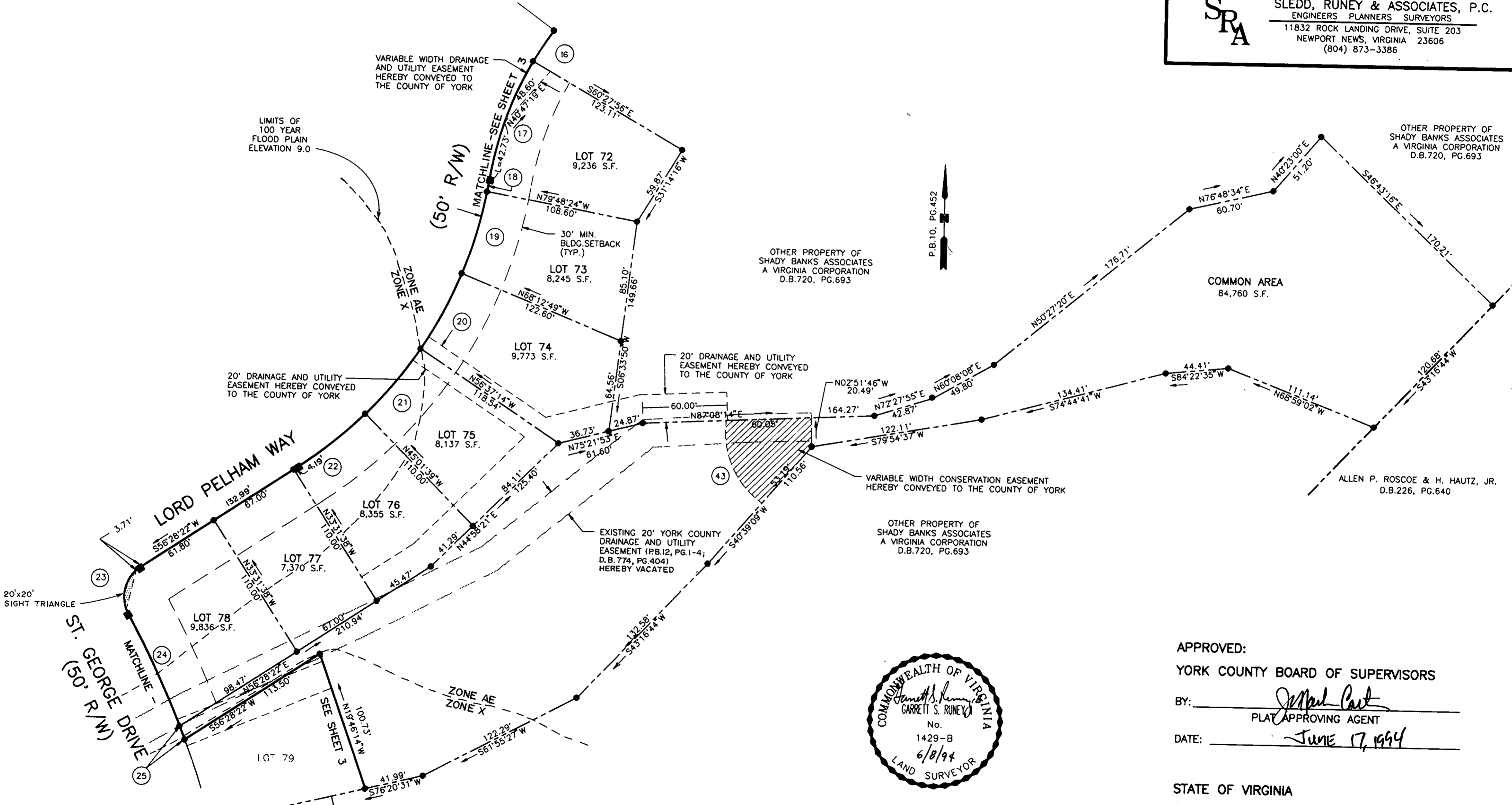
DATE: 15 DEC.1993

SHEET 4 OF 4

SCALE: 1"=50'



SLEDD, RUNEY & ASSOCIATES, P.C.
ENGINEERS PLANNERS SURVEYORS
11832 ROCK LANDING DRIVE, SUITE 203
NEWPORT NEWS, VIRGINIA 23606
(804) 873-3386

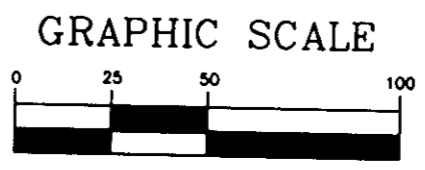


APPROVED:
YORK COUNTY BOARD OF SUPERVISORS
BY: James Paul
PLAT APPROVING AGENT
DATE: JUNE 17, 1994

STATE OF VIRGINIA
COUNTY OF YORK

IN THE CLERK'S OFFICE OF THE CIRCUIT COURT FOR
THE COUNTY OF YORK, THE 21 DAY OF JUNE, 1994.
THIS MAP WAS PRESENTED AND ADMITTED TO RECORD AS
THE LAW DIRECTS IN PLAT BOOK 12, PAGE 75.

TESTE: NANCY B. KANE
CLERK
BY: Rachael R. Danvers



INDICATES VARIABLE WIDTH SIGHT EASEMENT
HEREBY CONVEYED TO THE COUNTY OF YORK

FOR CURVE DATA - SEE SHEET 1 OF 4