

NOW OR FORMERLY
COUNTY SCHOOL BOARD OF YORK
(D.B.758, P.553; P.B.11, P.677)

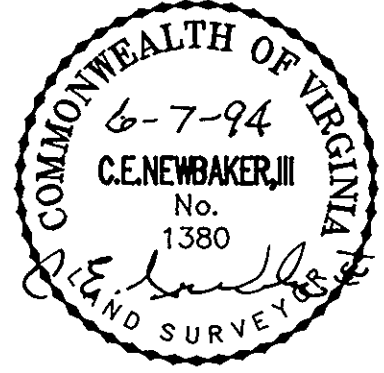
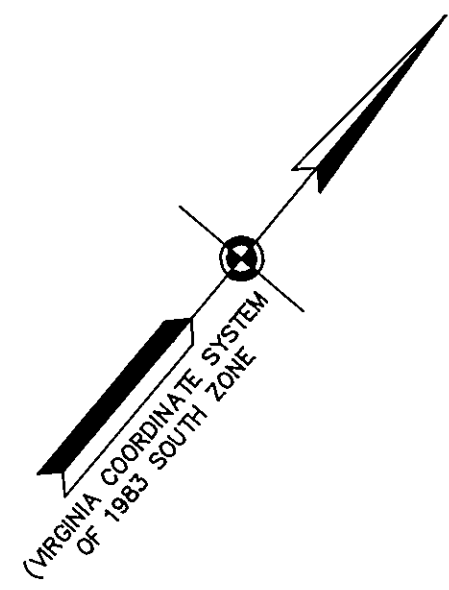
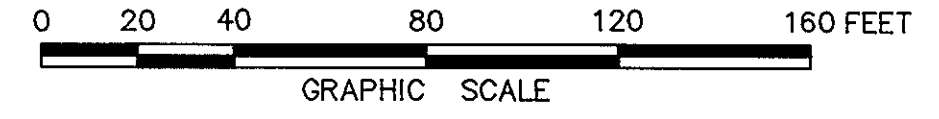
GLEN LAUREL
SECTION TWO

GRAFTON DISTRICT - COUNTY OF YORK, VIRGINIA

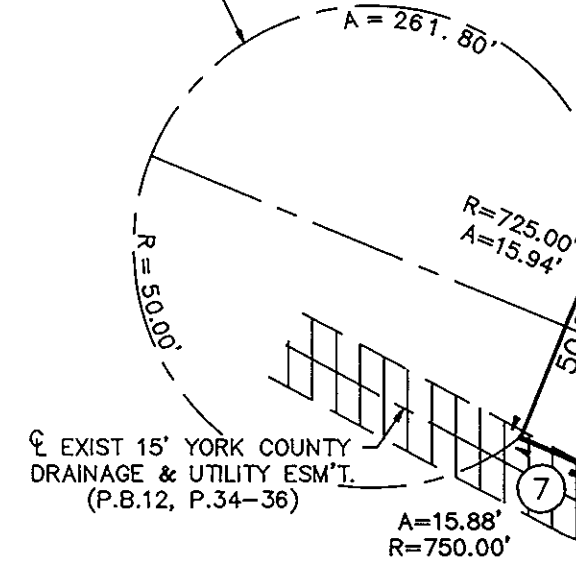
THE SIRINE GROUP, LTD.
SURVEYORS • ENGINEERS • PLANNERS
P.O. BOX 450, ROUTE 17
WHITE MARSH, VIRGINIA 23183

SCALE: 1" = 40' FEBRUARY 8, 1994

SHEET 2 OF 2



TEMPORARY TURNAROUND
EASEMENT TO BE VACATED
UPON EXTENSION OF
GLEN LAUREL WAY



NOW OR FORMERLY
G.C.R., INC.,
A VIRGINIA CORPORATION
(FUTURE DEVELOPMENT)



NOW OR FORMERLY
GLEN LAUREL
SECTION ONE
(P.B.12, P.34-36)

EXIST 20' YORK COUNTY
DRAINAGE & UTILITY ESM'T.
(P.B.12, P.34-36)

APPROVED:
YORK COUNTY BOARD OF SUPERVISORS

BY: *Mark Cato*
PLAT APPROVING AGENT

DATE: *July 22, 1994*

STATE OF VIRGINIA
COUNTY OF YORK
IN THE CLERK'S OFFICE OF THE CIRCUIT COURT FOR
THE COUNTY OF YORK THE *12* DAY OF *July*
1994, THIS PLAT WAS PRESENTED AND ADMITTED TO
RECORD AS THE LAW DIRECTS IN PLAT BOOK *12*
PAGE *89*

TESTE: *Nancy B. Kane*
CLERK

BY: *Carol Drosselmeier, D.C.*

NOW OR FORMERLY
GLEN LAUREL
SECTION ONE
(P.B.12, P.34-36)