

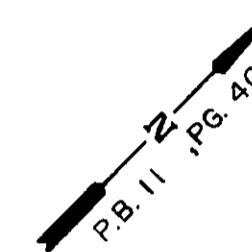
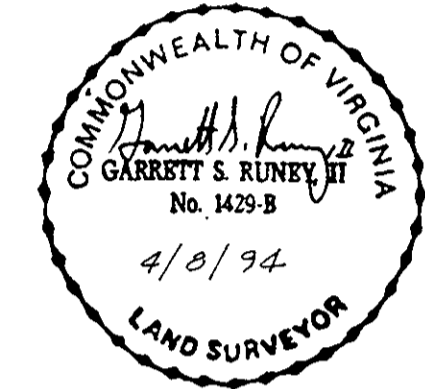
**THE SANCTUARY AT KILN CREEK**

SECTION TWO  
SINGLE FAMILY ATTACHED 1  
YORK COUNTY, VIRGINIA

DATE: APRIL 8, 1994 SHEET 4 OF 4 SCALE: 1" = 25'

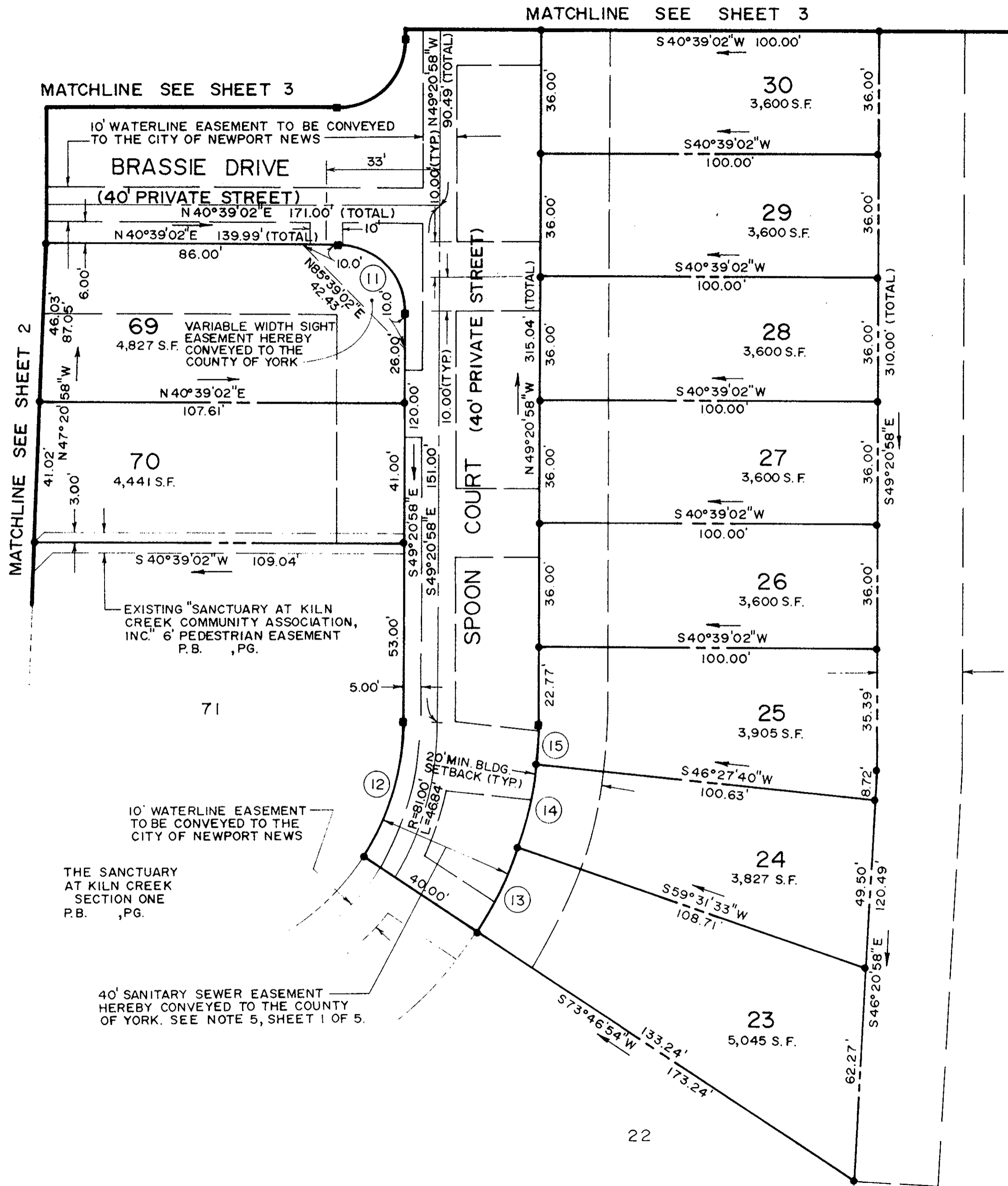


**SLEDD, RUNEY & ASSOCIATES, P.C.**  
ENGINEERS PLANNERS SURVEYORS  
11832 ROCK LANDING DRIVE, SUITE 203  
NEWPORT NEWS, VIRGINIA 23606  
(804) 873-3386



KILN CREEK  
JOINT VENTURE  
D.B. 602, PG. 374  
FUTURE GOLF COURSE

25' LANDSCAPE BUFFER EASEMENT  
TO BE CONVEYED TO THE "SANCTUARY  
AT KILN CREEK COMMUNITY ASSOCIATION, INC."



GRAPHIC SCALE



1 inch = 100 ft.

Plat Book No. 12 Page 106

**NANCY B. KANE, CLERK**

Filed in the Clerk's Office, Circuit Court, York Co., Va.  
the 5 day of August, 1994

Tested:  
Nancy B. Kane, Clerk

*Carol D. [Signature]* DC  
Dud. Book 808 Page 773