

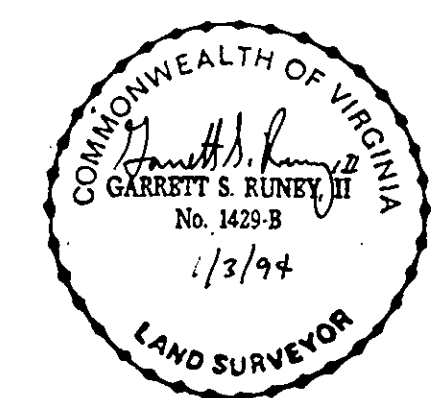
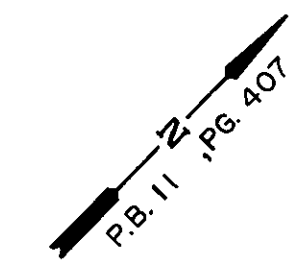
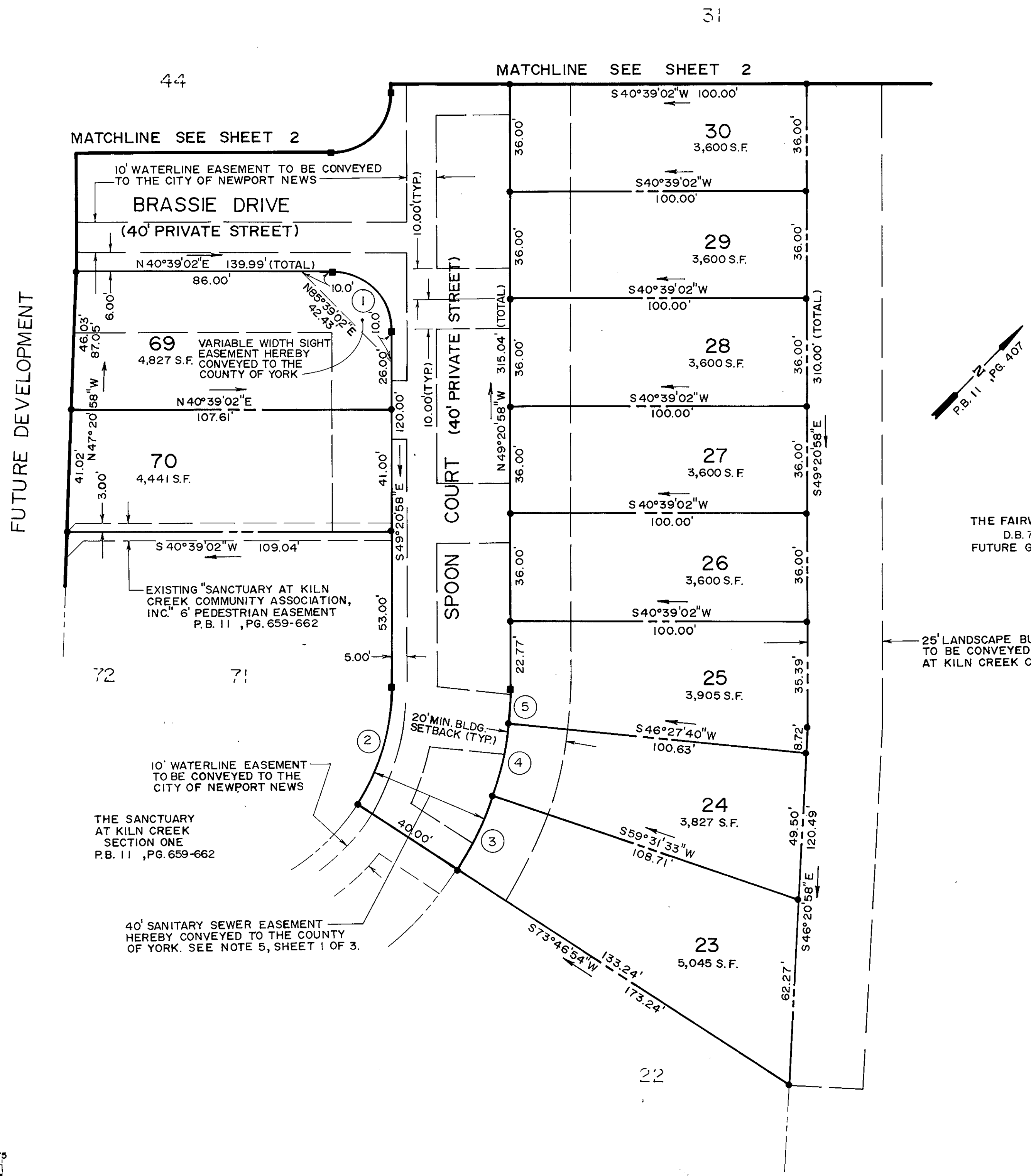
PLAT OF SUBDIVISION
THE VILLAGES OF KILN CREEK

THE SANCTUARY AT KILN CREEK

SECTION TWO
SINGLE FAMILY ATTACHED 1
YORK COUNTY, VIRGINIA

DATE: JAN. 3, 1994	SHEET 3 OF 3	SCALE: 1" = 25'
--------------------	--------------	-----------------

SRA SLEDD, RUNEY & ASSOCIATES, P.C.
ENGINEERS PLANNERS SURVEYORS
11832 ROCK LANDING DRIVE, SUITE 203
NEWPORT NEWS, VIRGINIA 23606
(804) 873-3388



THE FAIRWAYS GROUP L.P.
D.B. 791, PG. 73
FUTURE GOLF COURSE

APPROVED:
YORK COUNTY BOARD OF SUPERVISORS

BY: J. Mark Carter
PLAT APPROVING AGENT

DATE: SEPTEMBER 7, 1994

STATE OF VIRGINIA
COUNTY OF YORK

IN THE CLERK'S OFFICE OF THE CIRCUIT COURT FOR THE COUNTY OF YORK, THE 12 DAY OF Sept, 1994.
THIS MAP WAS PRESENTED AND ADMITTED TO RECORD AS THE LAW DIRECTS IN PLAT BOOK 12, PAGE 138.
11:55

TESTE: Nancy B. Kane
CLERK

BY: [Signature]

