

GLEN LAUREL

SECTION SIX

GRAFTON DISTRICT - COUNTY OF YORK, VIRGINIA

THE SIRINE GROUP, LTD.

SURVEYORS • ENGINEERS • PLANNERS
P.O. BOX 450, ROUTE 17
WHITE MARSH, VIRGINIA 23183

SCALE: 1" = 40' MAY 12, 1995

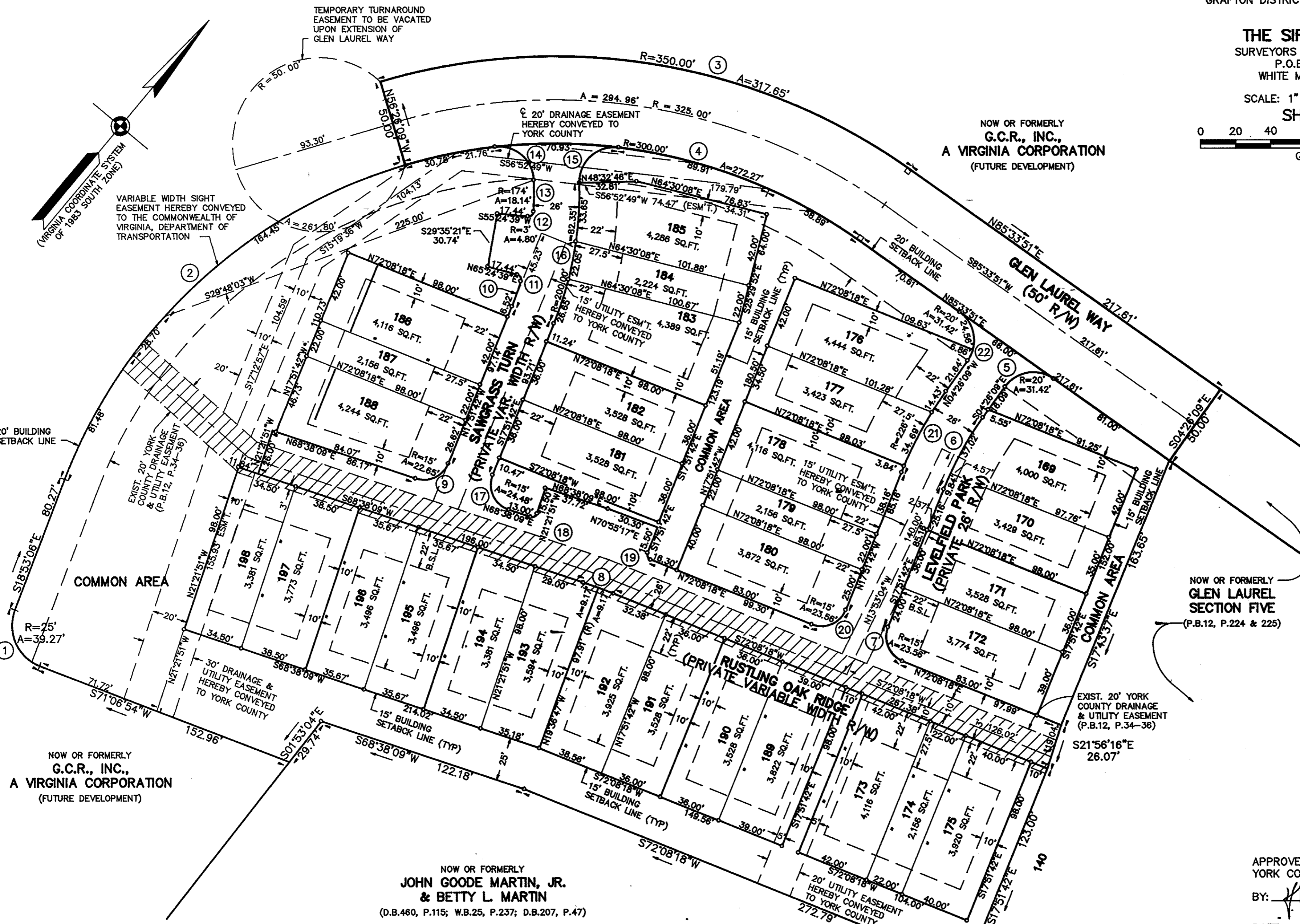
SHEET 2 OF 2

0 20 40 80 120 160 FEET

GRAPHIC SCALE

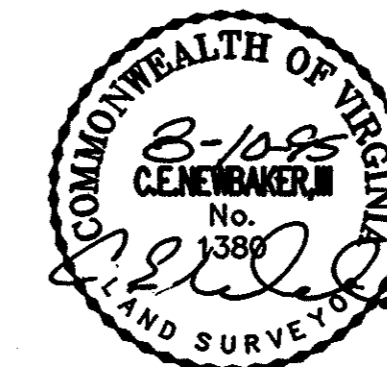
NOW OR FORMERLY
G.C.R., INC.,
A VIRGINIA CORPORATION
(FUTURE DEVELOPMENT)

NOW OR FORMERLY
GLEN LAUREL
SECTION FIVE
(P.B.12, P.224 & 225)



NOW OR FORMERLY
G.C.R., INC.,
A VIRGINIA CORPORATION
(FUTURE DEVELOPMENT)

NOW OR FORMERLY
JOHN GOODE MARTIN, JR.
& **BETTY L. MARTIN**
(D.B.460, P.115; W.B.25, P.237; D.B.207, P.47)



APPROVED:
YORK COUNTY BOARD OF SUPERVISORS

BY: *[Signature]*
PLAT APPROVING AGENT

DATE: SEPT. 15, 1995

STATE OF VIRGINIA
COUNTY OF YORK
IN THE CLERK'S OFFICE OF THE CIRCUIT COURT FOR
THE COUNTY OF YORK THE 15 DAY OF September
1995, THIS PLAT WAS PRESENTED AND ADMITTED TO
RECORD AS THE LAW DIRECTS IN PLAT BOOK 122
PAGE 293

TESTE: *[Signature]*
CLERK

BY: *[Signature]*
Deputy Clerk