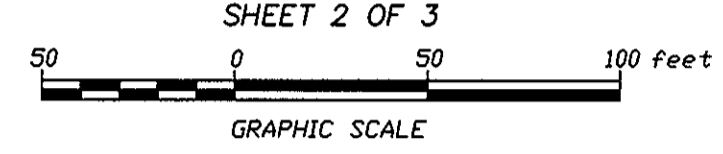


SUBDIVISION PLAT OF
WILLIAMSBURG BLUFFS
 SECTION II, PHASE I
 (TAX MAP 11-11 SECTION II, PHASE I)
 FOR

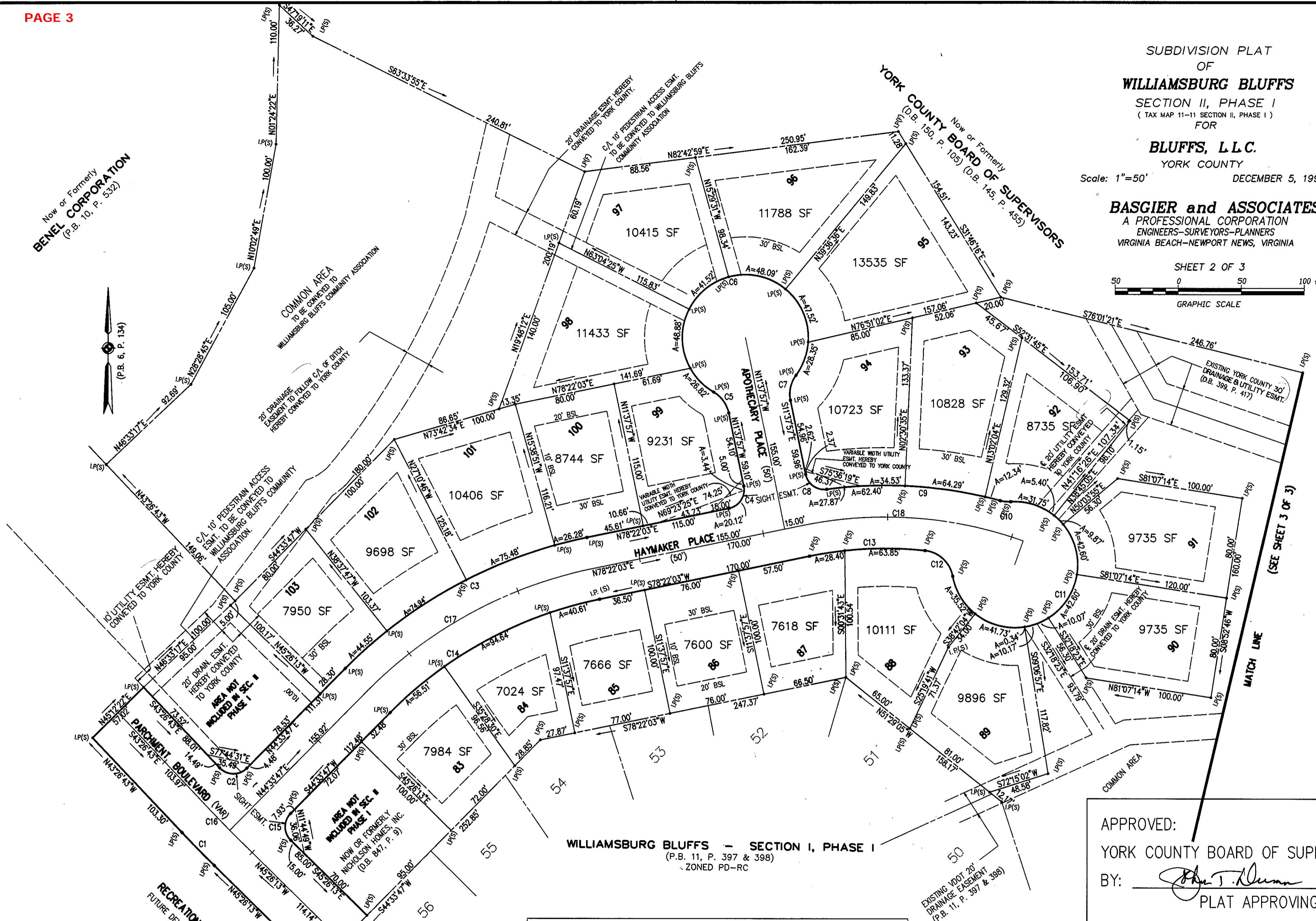
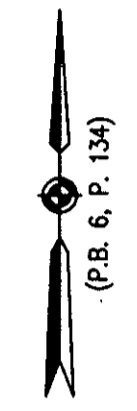
BLUFFS, L.L.C.
 YORK COUNTY

Scale: 1"=50' DECEMBER 5, 1995

BASGIER and ASSOCIATES
 A PROFESSIONAL CORPORATION
 ENGINEERS-SURVEYORS-PLANNERS
 VIRGINIA BEACH-NEWPORT NEWS, VIRGINIA



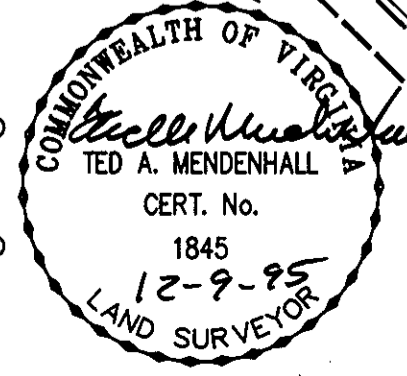
Now or Formerly
BENEL CORPORATION
 (P.B. 10, P. 532)



WILLIAMSBURG BLUFFS - SECTION I, PHASE I
 (P.B. 11, P. 397 & 398)
 ZONED PD-RC

APPROVED:
 YORK COUNTY BOARD OF SUPERVISORS
 BY: *John T. Quinn*
 PLAT APPROVING AGENT
 DATE: 1-31-96

UTILITIES NOTES:
 WATER: EACH LOT WITHIN THIS SUBDIVISION WILL BE SERVED BY PUBLIC WATER PROVIDED BY THE CITY OF NEWPORT NEWS, DEPT. OF PUBLIC UTILITIES.
 SEWER: EACH LOT WITHIN THIS SUBDIVISION WILL BE SERVED BY PUBLIC SANITARY SEWER PROVIDED BY YORK COUNTY.



NO.	DELTA	RADIUS	ARC	TANGENT	CHORD	CH. BEARING
C1	01°59'30"	1057.00'	36.74'	18.37'	36.74'	S 44°26'28" E
C2	91°59'30"	15.00'	15.00'	15.53'	21.58'	S 89°26'28" E
C3	33°48'16"	375.00'	221.25'	113.95'	218.05'	S 61°27'55" E
C4	90°00'00"	25.00'	25.00'	25.00'	25.00'	S 90°00'00" E
C5	48°11'23"	25.00'	21.03'	11.18'	20.41'	S 33°23'09" W
C6	278°22'46"	25.00'	241.19'	66.67'	86.67'	S 78°22'03" W
C7	48°11'23"	25.00'	21.03'	11.18'	20.41'	S 12°27'44" W
C8	88°04'23"	15.00'	22.53'	14.01'	20.47'	S 54°40'09" W
C9	22°45'37"	350.00'	139.04'	70.45'	138.12'	S 86°19'31" W
C10	18°52'33"	25.00'	8.24'	4.16'	8.20'	S 84°22'59" E
C11	263°13'17"	50.00'	229.70'	74.77'	374.23'	S 74°27'23" W
C12	73°24'50"	25.00'	32.03'	18.64'	29.89'	S 47°18'23" W
C13	17°37'09"	300.00'	92.25'	46.49'	91.89'	S 47°10'37" W
C14	33°48'16"	325.00'	191.75'	98.76'	188.98'	S 61°27'55" W
C15	90°00'00"	15.00'	23.56'	15.00'	21.21'	S 90°00'00" E
C16	01°59'30"	1028.50'	35.75'	17.88'	35.75'	S 44°26'28" E
C17	33°48'16"	350.00'	206.50'	106.35'	203.52'	S 86°00'27" W
C18	31°15'01"	325.00'	177.26'	90.90'	175.07'	S 86°00'27" W