

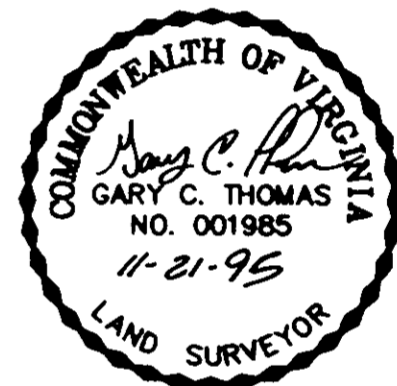
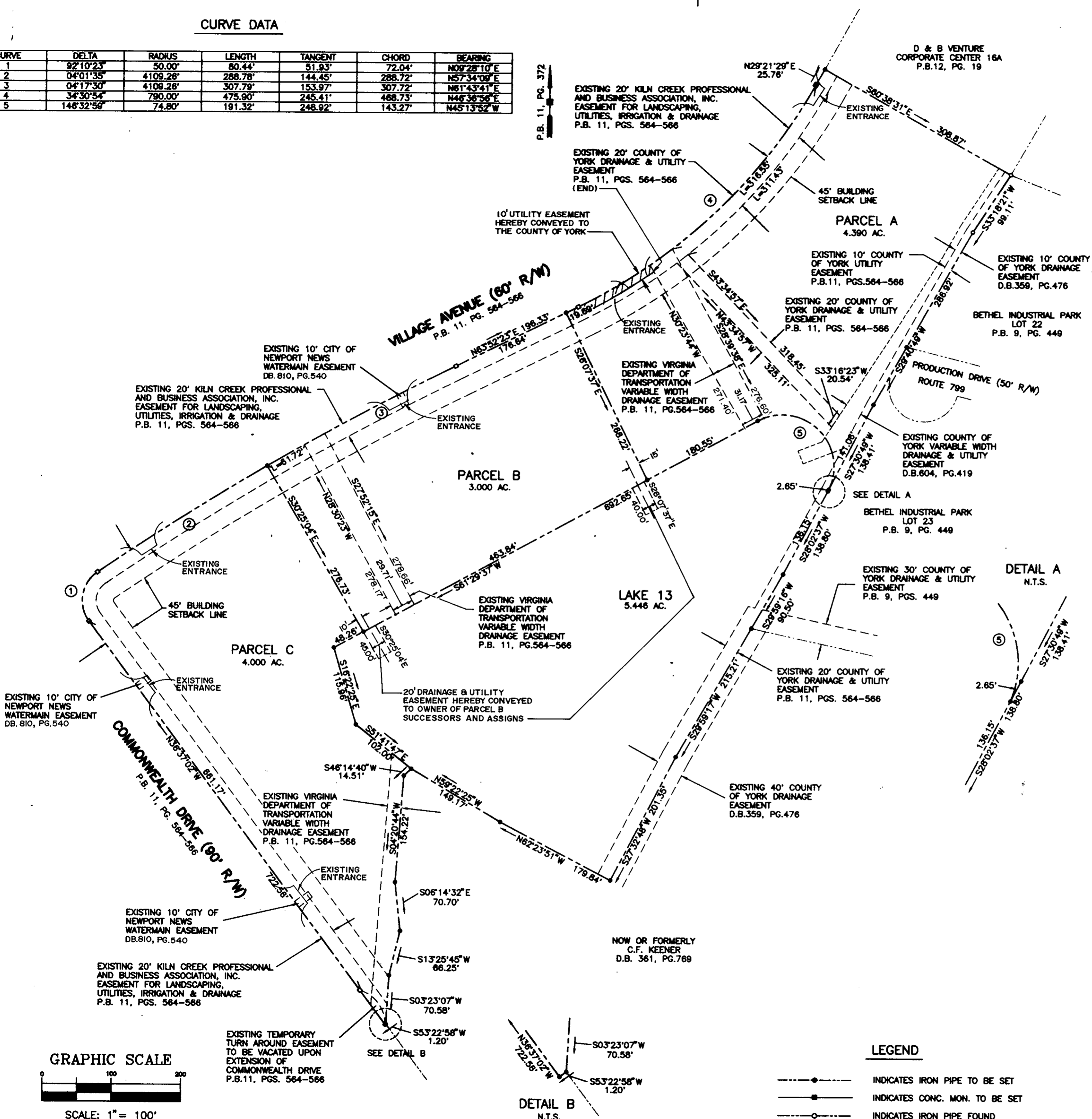
CURVE DATA

CURVE	DELTA	RADIUS	LENGTH	TANGENT	CHORD	BEARING
1	92°10'23"	50.00'	80.44'	51.93'	72.04'	N09°28'10"E
2	04°01'35"	4109.26'	288.78'	144.45'	288.72'	N57°34'09"E
3	04°17'30"	4109.26'	307.79'	153.97'	307.72'	N61°43'41"E
4	34°30'54"	790.00'	475.90'	245.41'	468.73'	N46°36'56"E
5	146°32'59"	74.80'	191.32'	248.92'	143.27'	N45°13'52"W

PLAT OF SUBDIVISION
THE VILLAGES OF KILN CREEK
PORTION OF
**CORPORATE CENTER
16**
COUNTY OF YORK, VIRGINIA

DATE: 7/6/95 SHEET 2 OF 2 SCALE: 1"=100'
PROJECT NO: 95-827 DRAWN BY: PAUL MICHAEL

SRA SLEDD, RONEY & ASSOCIATES, P.C.
ENGINEERS PLANNERS SURVEYORS
11832 ROCK LANDING DRIVE, SUITE 203
NEWPORT NEWS, VIRGINIA 23606
(804) 873-3386



APPROVED:
YORK COUNTY BOARD OF SUPERVISORS
BY: John T. Dunn, PE
PLAT APPROVING AGENT
DATE: 2-12-96

STATE OF VIRGINIA
COUNTY OF YORK
IN THE CLERK'S OFFICE OF THE CIRCUIT COURT FOR
THE COUNTY OF YORK, THE 13th DAY OF Feb, 1996.
THIS MAP WAS PRESENTED AND ADMITTED TO RECORD AS
THE LAW DIRECTS IN PLAT BOOK 12, PAGE 349.

TESTE: NANCY B. KANE, CLERK
CLERK
BY: Innocent S. Brown

- LEGEND**
- INDICATES IRON PIPE TO BE SET
 - INDICATES CONC. MON. TO BE SET
 - INDICATES IRON PIPE FOUND
 - INDICATES CONC. MON. FOUND

