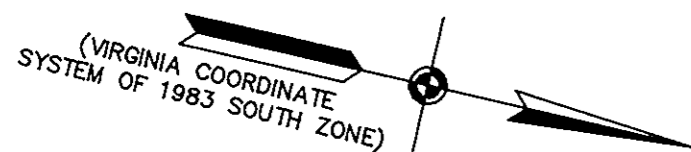
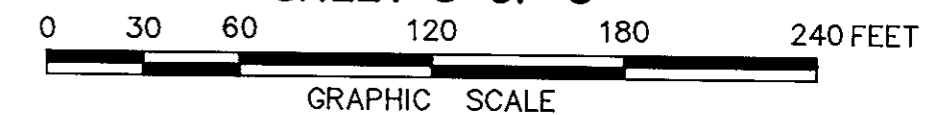


WYTHE CREEK FARMS
(D.B.775, P.375; P.B.10, P.427)
SECTION TWO
BETHEL DISTRICT - COUNTY OF YORK, VIRGINIA

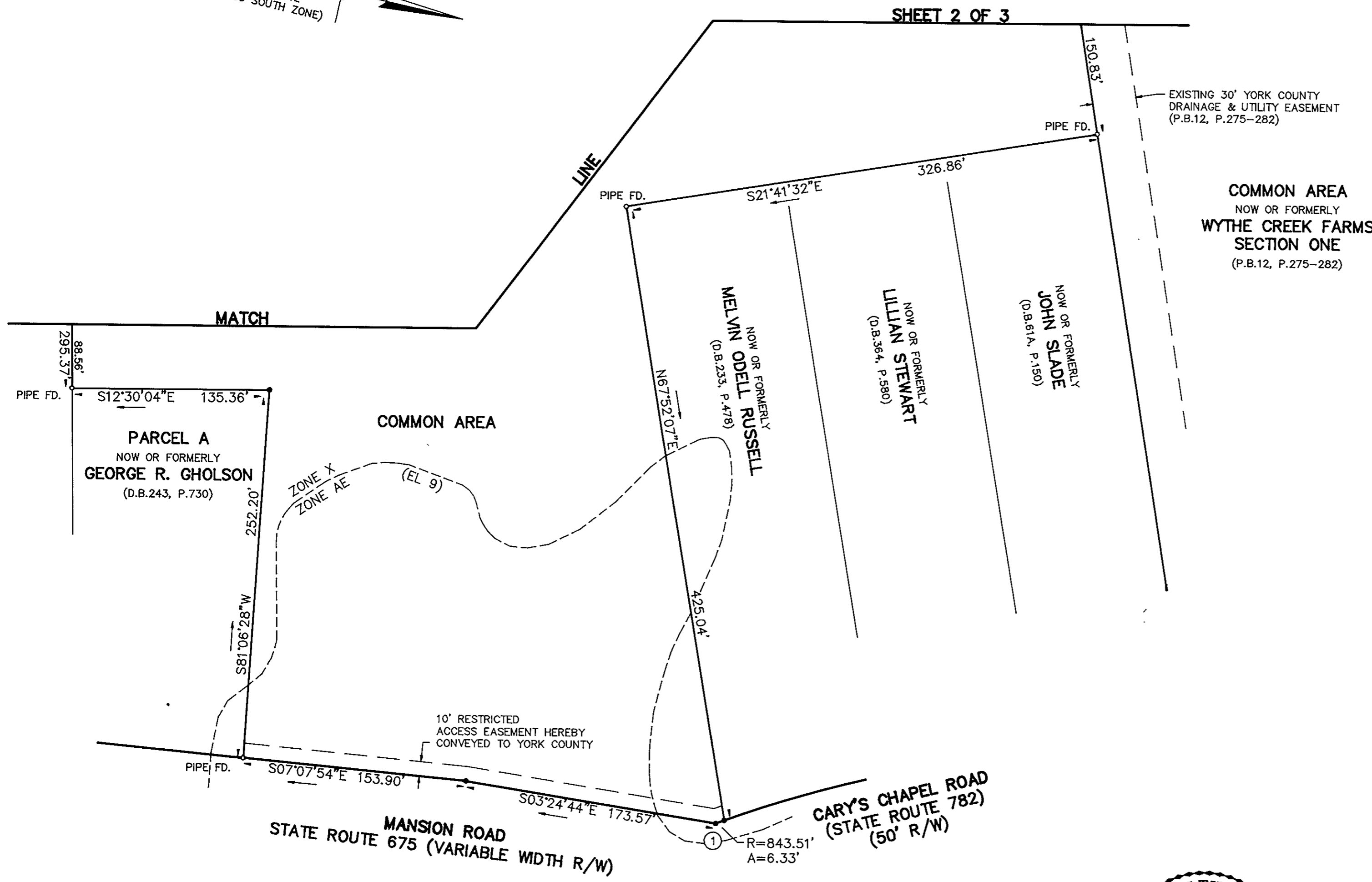
THE SIRINE GROUP, LTD.
SURVEYORS • ENGINEERS • PLANNERS
P.O. BOX 450, ROUTE 17
WHITE MARSH, VIRGINIA 23183

SCALE: 1" = 60' AUGUST 4, 1995

SHEET 3 OF 3



SHEET 2 OF 3



EXISTING 30' YORK COUNTY DRAINAGE & UTILITY EASEMENT (P.B.12, P.275-282)

COMMON AREA
NOW OR FORMERLY
WYTHE CREEK FARMS
SECTION ONE
(P.B.12, P.275-282)

PARCEL A
NOW OR FORMERLY
GEORGE R. GHOLSON
(D.B.243, P.730)

MELVIN ODELL RUSSELL
NOW OR FORMERLY
(D.B.253, P.478)

LILLIAN STEWART
NOW OR FORMERLY
(D.B.364, P.580)

JOHN SLADE
NOW OR FORMERLY
(D.B.614, P.150)

10' RESTRICTED ACCESS EASEMENT HEREBY CONVEYED TO YORK COUNTY

CARY'S CHAPEL ROAD
(STATE ROUTE 782)
(50' R/W)

MANSION ROAD
STATE ROUTE 675 (VARIABLE WIDTH R/W)

APPROVED:
YORK COUNTY BOARD OF SUPERVISORS
BY: [Signature]
PLAT APPROVING AGENT
DATE: 3/12/96



STATE OF VIRGINIA
COUNTY OF YORK
IN THE CLERK'S OFFICE OF THE CIRCUIT COURT FOR THE COUNTY OF YORK THE 14th DAY OF March, 1996, THIS PLAT WAS PRESENTED AND ADMITTED TO RECORD AS THE LAW DIRECTS IN PLAT BOOK 12, PAGE 362.

TESTE: ANDY B. KANE
CLERK
BY: [Signature]