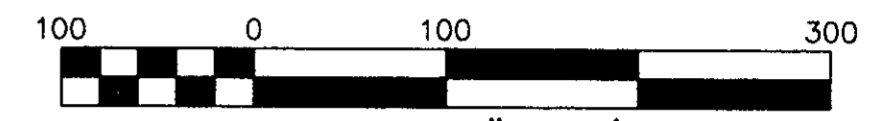


SKIMINO LANDING ESTATES, PHASE I

SUBDIVISION PLAT OF
COUNTY OF YORK, BRUTON DISTRICT VIRGINIA
DATE: JUNE 1996
ENGINEERS • ARCHITECTS • SURVEYORS
INTERIOR DESIGNERS • PLANNERS
P.O. BOX 3505 WILLIAMSBURG, VIRGINIA 23187
(804)253-0673 (804)874-5015

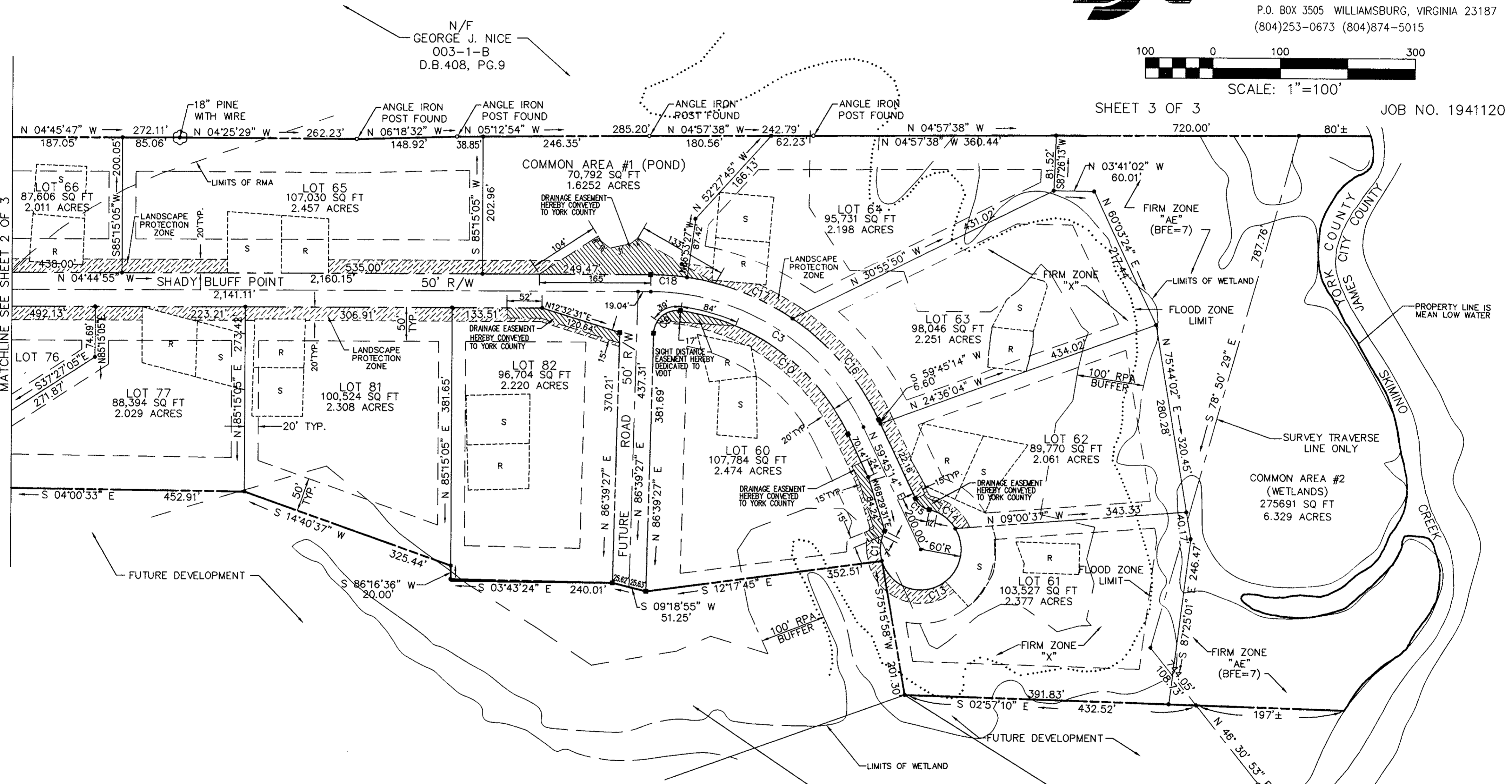


SCALE: 1"=100'

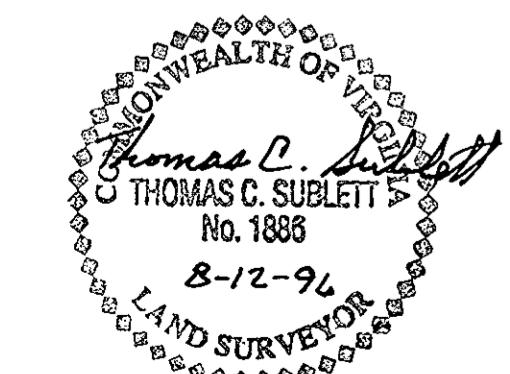
SHEET 3 OF 3

JOB NO. 1941120

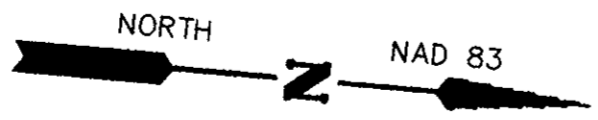
N/F
GEORGE J. NICE
003-1-B
D.B.408, PG.9



MATCHLINE SEE SHEET 2 OF 3



Thomas C. Sublett
THOMAS C. SUBLETT L.S. 1888
8-12-96
DATE



REMAINING PROPERTY OF
SKIMINO DEVELOPMENT COMPANY, L.L.C.
D.B.868, PG.450
003-2-A

APPROVED
YORK COUNTY BOARD OF SUPERVISORS

BY: Al. Maddalena
PLAT APPROVING AGENT

DATE: 9/12/96

STATE OF VIRGINIA
COUNTY OF YORK
IN THE CLERK'S OFFICE OF THE CIRCUIT COURT FOR THE
COUNTY OF YORK THE 12 DAY OF Sept. 1996
THIS MAP WAS PRESENTED AND ADMITTED TO RECORD AS
THE LAW DIRECTS IN PLAT BOOK 12 PAGE 402
TESTE: Darcy B. Kane
CLERK
BY: Carol Drosselmeier, Deputy Clerk