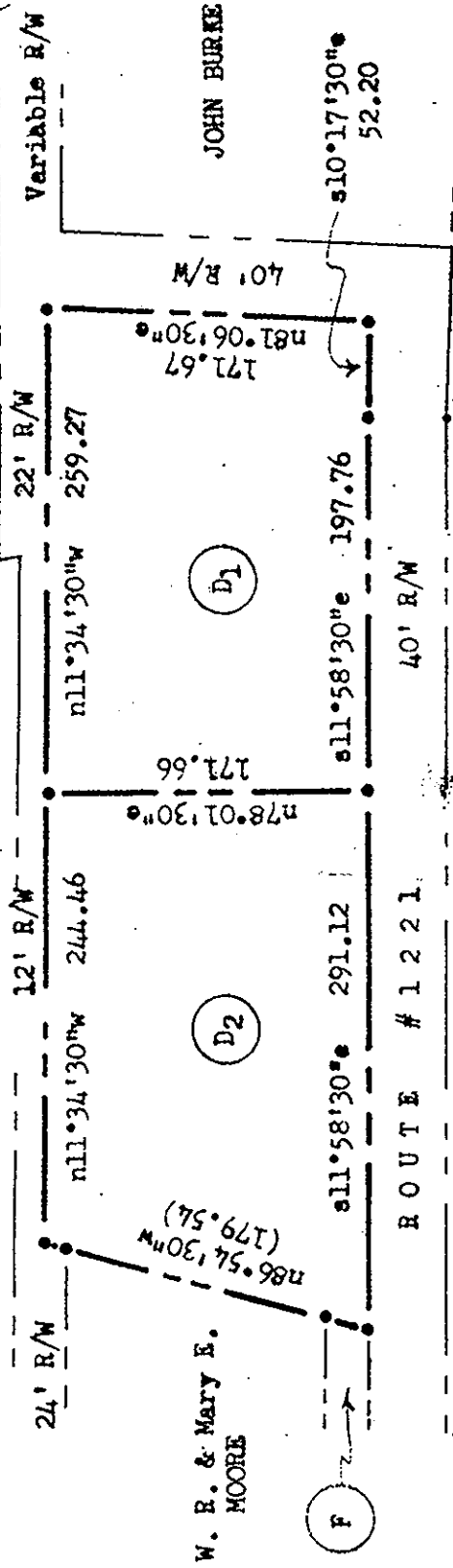


Variance from 2.0 acre minimum lot area requirement granted by the Board of Zoning/Subdivision Appeals on September 28, 1994 (Application No. 94-17).



R. F. PRESSON, prop. Sub.



JOHN BURKE BRISTOW

ROBERT F. PRESSON

W. R. & Mary E. MOORE

YORK COUNTY
 APPROVED FOR RECORDATION
 BY: *[Signature]*
 TITLE: DIRECTOR, ENV. & DEV. SVS.
 DATE: DEC. 3, 1996

NOTE:
 Iron pipes at all corners,
 Bearings are clockwise.
 Ref.: D.B. # 208 P. # 667,
 P.B. # 8, p. # 97.

AREAS: PARCEL D₁ = 1.000 Acre
 D₂ = 1.061 Acre,
 D = 2.061 Acres TOTAL.



Stephen Stephens

PLAT of:
 PARCELS: "D₁" & "D₂",
 R. F. & W. M. PRESSON, Estates, Subdivision
 Property of:
 HAZEL M. PRESSON
 Scale: 1" = 100'
 April 1974
 GRAFTON DISTRICT, YORK COUNTY, VIRGINIA

Filed in the Clerk's Office, Circuit Court, York Co., Va. the 10 day of December 1996

Testa: Nancy B. Kane, Clerk
Carol Drosselmeier D.C.