

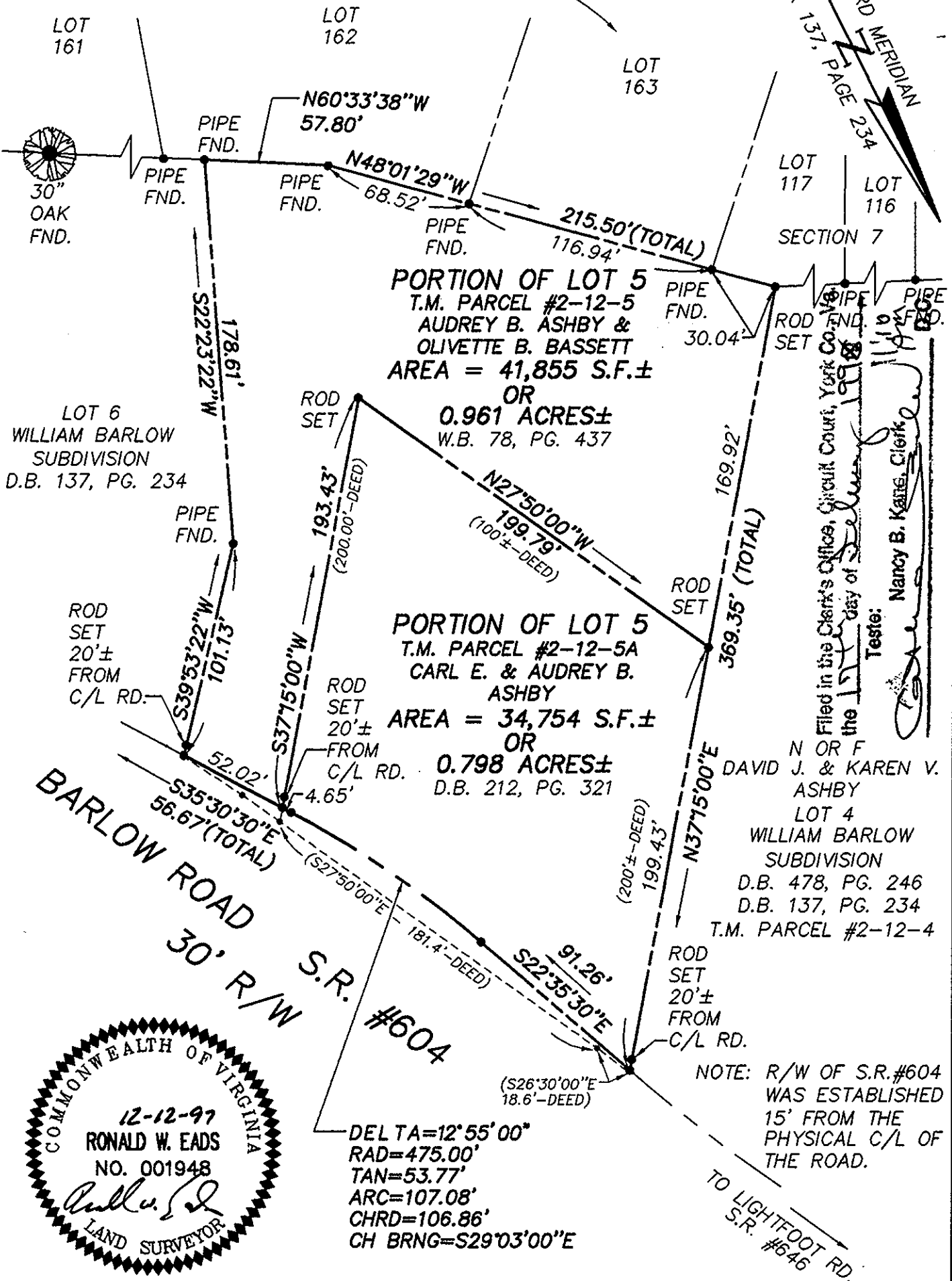
"SKIMMING HILLS" SUBDIVISION

P.B. 8, PG. 355

P.B. 9, PG. 450

SECTION 8

DEED BOOK 137, PAGE 234
RECORD MERIDIAN



PORTION OF LOT 5
T.M. PARCEL #2-12-5
AUDREY B. ASHBY &
OLIVETTE B. BASSETT
AREA = 41,855 S.F.±
OR
0.961 ACRES±
W.B. 78, PG. 437

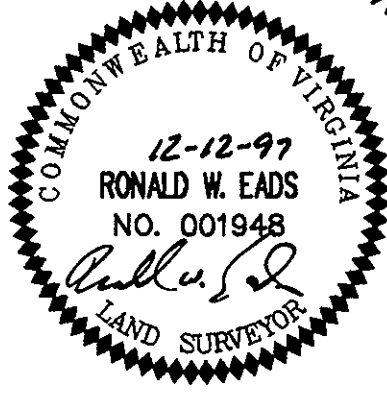
PORTION OF LOT 5
T.M. PARCEL #2-12-5A
CARL E. & AUDREY B.
ASHBY
AREA = 34,754 S.F.±
OR
0.798 ACRES±
D.B. 212, PG. 321

N OR F
DAVID J. & KAREN V.
ASHBY
LOT 4
WILLIAM BARLOW
SUBDIVISION
D.B. 478, PG. 246
D.B. 137, PG. 234
T.M. PARCEL #2-12-4

NOTE: R/W OF S.R. #604
WAS ESTABLISHED
15' FROM THE
PHYSICAL C/L OF
THE ROAD.

DELTA=12°55'00"
RAD=475.00'
TAN=53.77'
ARC=107.08'
CHRD=106.86'
CH BRNG=S29°03'00"E

Filed in the Clerk's Office, Circuit Court, York County, Virginia
the 15th day of December 1997
Teste:
Nancy B. Kaine, Clerk



Consulting Engineers
Engineers, Surveyors, Planners

5248 Olde Towne Road, Suite 1
Williamsburg, Virginia 23188
Ph. (757)-253-0040, Fax (757)-220-8994

PLAT OF SURVEY
SHOWING 2 PARCELS OF LAND BEING LOT 5, WILLIAM BARLOW ESTATE SUBDIVISION
TAX MAP PARCEL #2-12-5 OWNED BY AUDREY B. ASHBY & OLIVETTE B. BASSETT
TAX MAP PARCEL #2-12-5A OWNED BY CARL E. & AUDREY B. ASHBY
BRUTON DISTRICT YORK COUNTY VIRGINIA