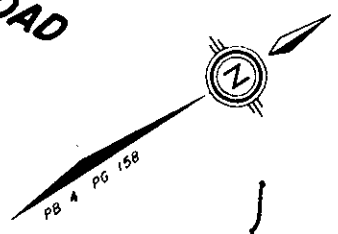
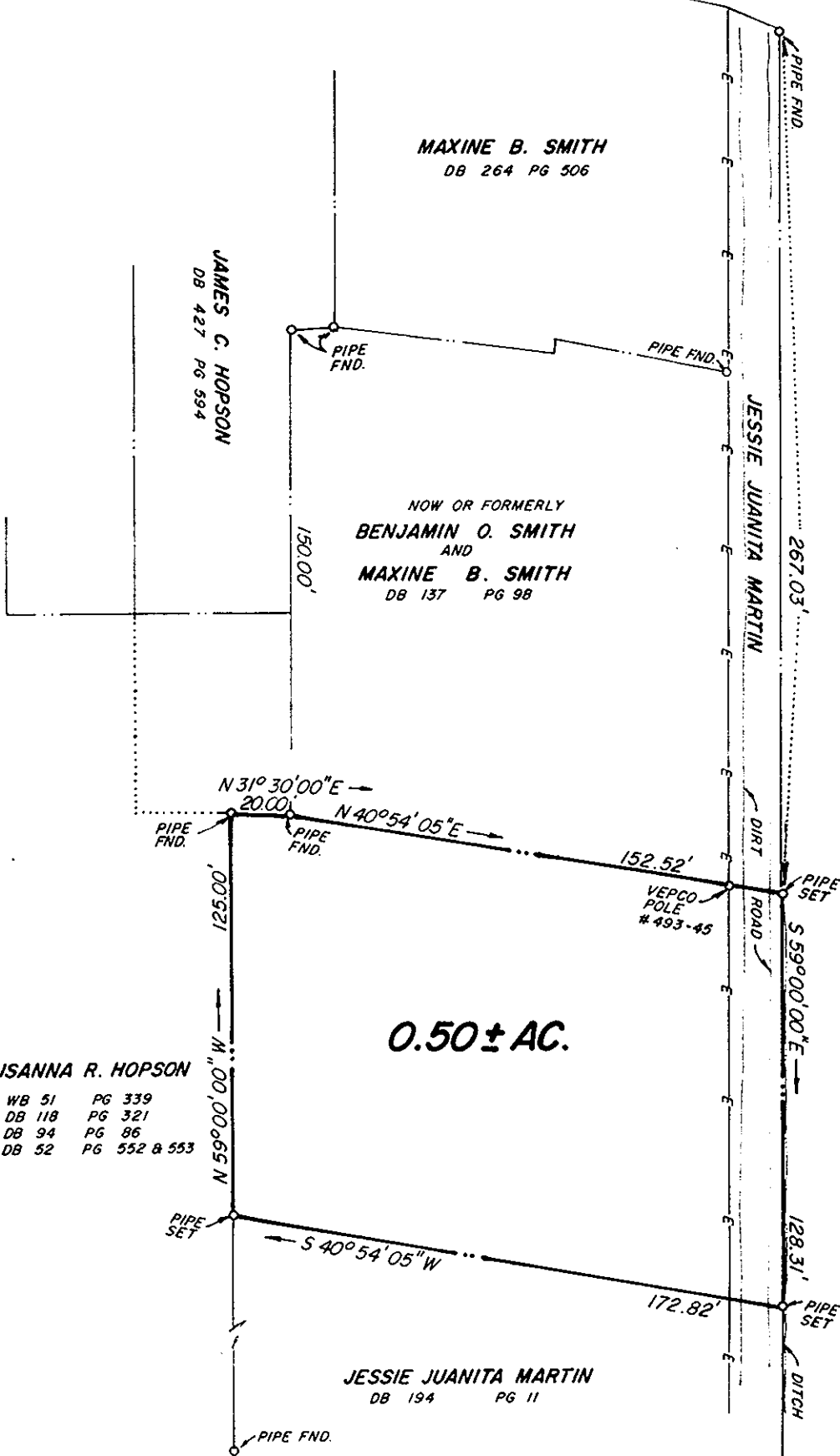


Route 782
EAST YORKTOWN ROAD
TO ROUTE 171



YORK COUNTY
APPROVED FOR RECORDATION
BY: *Alfred Hernandez*
TITLE: *Chief of Development*
DATE: APRIL 6, 1998

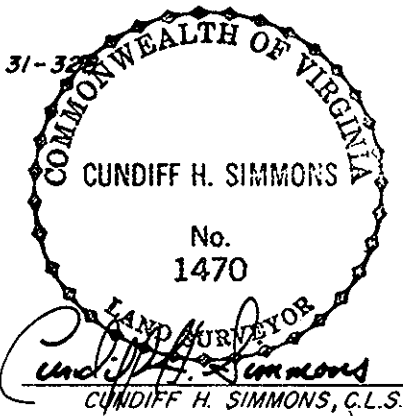


Virginia: County of York to-wit:
In the Clerk's Office of the Circuit Court for the
County of York, the 7th day of April 19 98
This deed was presented with the certificate annexed
and admitted to record at 8:33 o'clock A.M.
Teste: Nancy B. Kane, Clerk
By: *Alfred Hernandez* Deputy Clerk

CARRIE W. POTTS
WB 46 PG 655
DB 144 PG 256

SUSANNA R. HOPSON
WB 51 PG 339
DB 118 PG 321
DB 94 PG 86
DB 52 PG 552 & 553

REF:
DB 119 PG 330
DB 420 PG 276
TAX MAP PARCEL 31-32



PLAT SHOWING PROPERTY OF		
SUSANNA R. HOPSON BETHEL DISTRICT — YORK COUNTY, VIRGINIA		
HUGH C. DISCHINGER & ASSOCIATES, P.C. ENGINEERS • SURVEYORS York County, Virginia		
Drawn: GJP	Scale: 1" = 50'	Revisions:
Checked: CHS	Date: JUNE 25, 1986	
Fb180 Pg 27-33	Job No: 86-1-1741	