

# WYTHE CREEK FARMS 617

(D.B.910, P.391; P.B.10, P.427)

## SECTION THREE

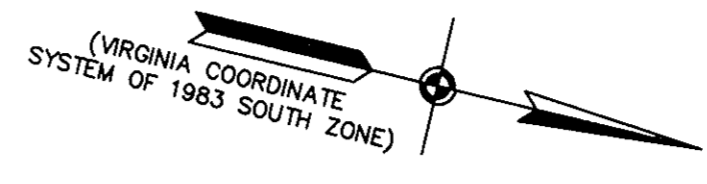
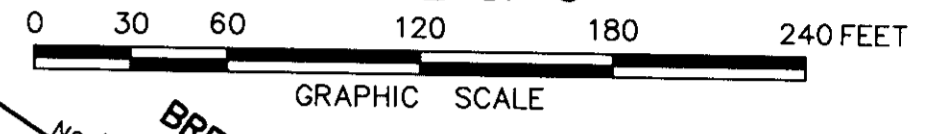
BETHEL DISTRICT - COUNTY OF YORK, VIRGINIA

### THE SIRINE GROUP, LTD.

SURVEYORS • ENGINEERS • PLANNERS  
P.O. BOX 450, ROUTE 17  
WHITE MARSH, VIRGINIA 23183

SCALE: 1" = 60' MAY 29, 1998

SHEET 2 OF 3



NOW OR FORMERLY  
WILBER CARY SMITH MORTON  
(CHANCERY ORDER BOOK NO.16, P.6)

NOW OR FORMERLY  
WYTHE CREEK FARMS, L.L.C.,  
A VIRGINIA LIMITED LIABILITY COMPANY  
(D.B.775, P.375)  
(FUTURE DEVELOPMENT)

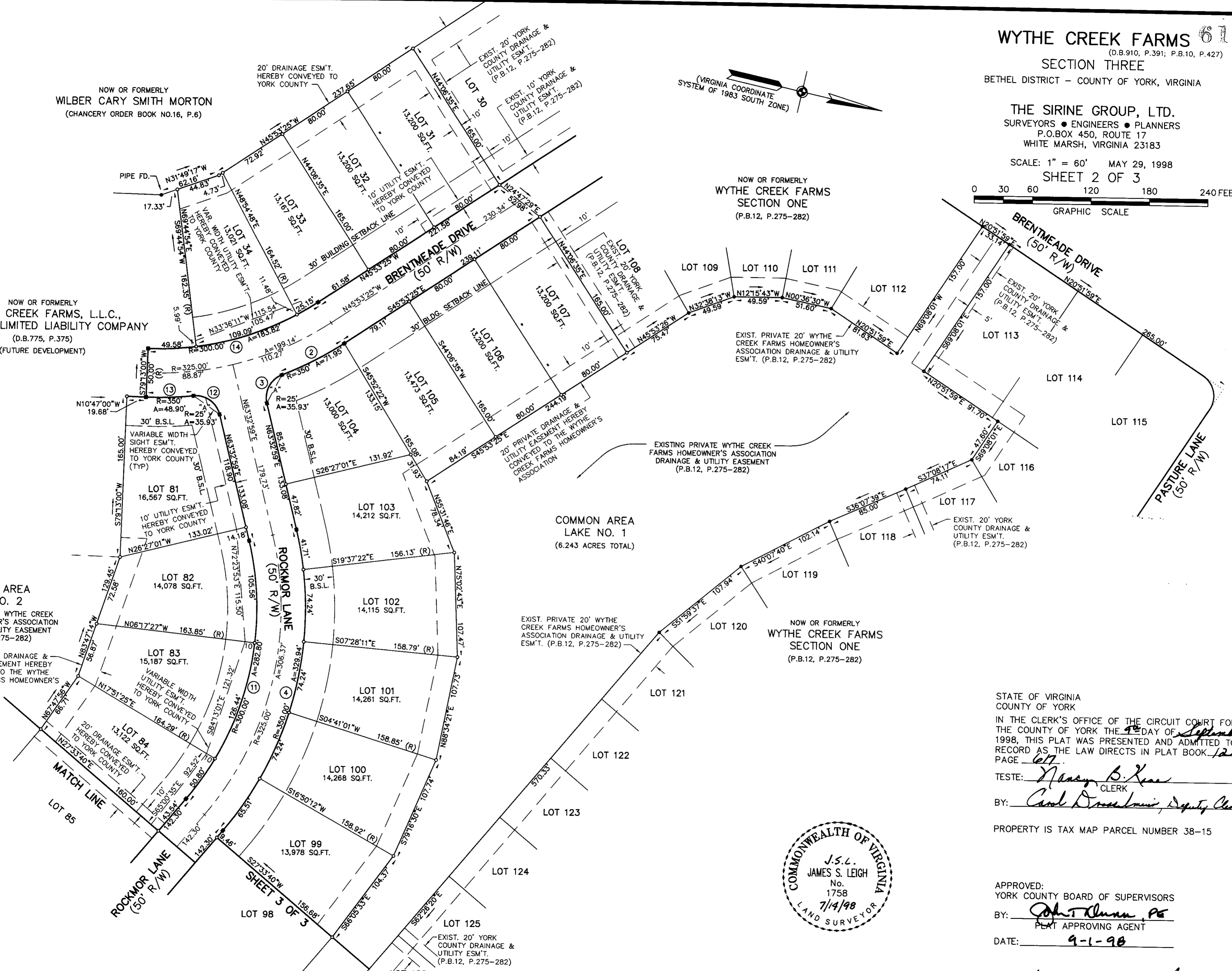
NOW OR FORMERLY  
WYTHE CREEK FARMS  
SECTION ONE  
(P.B.12, P.275-282)

NOW OR FORMERLY  
WYTHE CREEK FARMS  
SECTION ONE  
(P.B.12, P.275-282)

COMMON AREA  
LAKE NO. 2  
EXISTING PRIVATE WYTHE CREEK  
FARMS HOMEOWNER'S ASSOCIATION  
DRAINAGE & UTILITY EASEMENT  
(P.B.12, P.275-282)

COMMON AREA  
LAKE NO. 1  
(6.243 ACRES TOTAL)

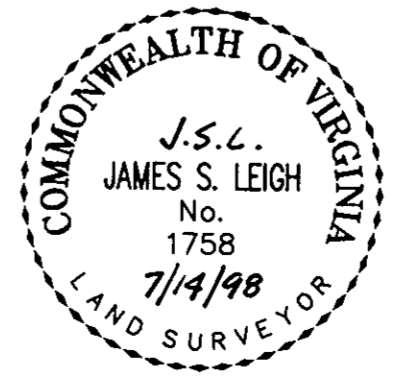
EXIST. PRIVATE 20' WYTHE  
CREEK FARMS HOMEOWNER'S  
ASSOCIATION DRAINAGE & UTILITY  
ESM'T. (P.B.12, P.275-282)



STATE OF VIRGINIA  
COUNTY OF YORK  
IN THE CLERK'S OFFICE OF THE CIRCUIT COURT FOR  
THE COUNTY OF YORK THE 9<sup>th</sup> DAY OF September  
1998, THIS PLAT WAS PRESENTED AND ADMITTED TO  
RECORD AS THE LAW DIRECTS IN PLAT BOOK 122,  
PAGE 617.

TESTE: Nancy B. Kane  
CLERK  
BY: Carol D. ...  
Deputy Clerk

PROPERTY IS TAX MAP PARCEL NUMBER 38-15



APPROVED:  
YORK COUNTY BOARD OF SUPERVISORS

BY: John T. ...  
PLAT APPROVING AGENT

DATE: 9-1-98

*Deed Book 1039 Page 179*