

"THE STREETS SHOWN HEREON ARE PRIVATE, MAY NOT MEET STATE STANDARDS, AND WILL NOT BE MAINTAINED BY EITHER THE COMMONWEALTH OF VIRGINIA OR THE COUNTY OF YORK. MAINTENANCE OF THE ROADS AND RIGHTS-OF-WAY SHOWN HEREON ARE THE RESPONSIBILITY OF THE PROPERTY OWNERS ASSOCIATION FOR THE LOTS CREATED BY THIS PLAT."

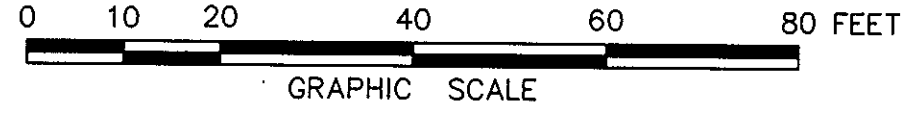
PRIVATE EASEMENTS FOR SEWER AND WATER LATERALS ARE FOR THE USE AND BENEFIT OF THE OWNERS OF THE LOTS WHICH THEY BENEFIT. MAINTENANCE AND REPLACEMENT OF THESE LATERALS TO BE THE RESPONSIBILITY OF THE GABLES OF YORK COUNTY COMMUNITY ASSOCIATION, INC.

RESUBDIVISION OF **643**
 LOTS 13 THROUGH 16
THE GABLES OF YORK COUNTY
 (P.B.12, P.480-482; P.B.12, P.492)
 SECTION ONE
 BETHEL DISTRICT - COUNTY OF YORK, VIRGINIA

THE SIRINE GROUP, LTD.
 SURVEYORS • ENGINEERS • PLANNERS
 P.O. BOX 450, ROUTE 17
 WHITE MARSH, VIRGINIA 23183

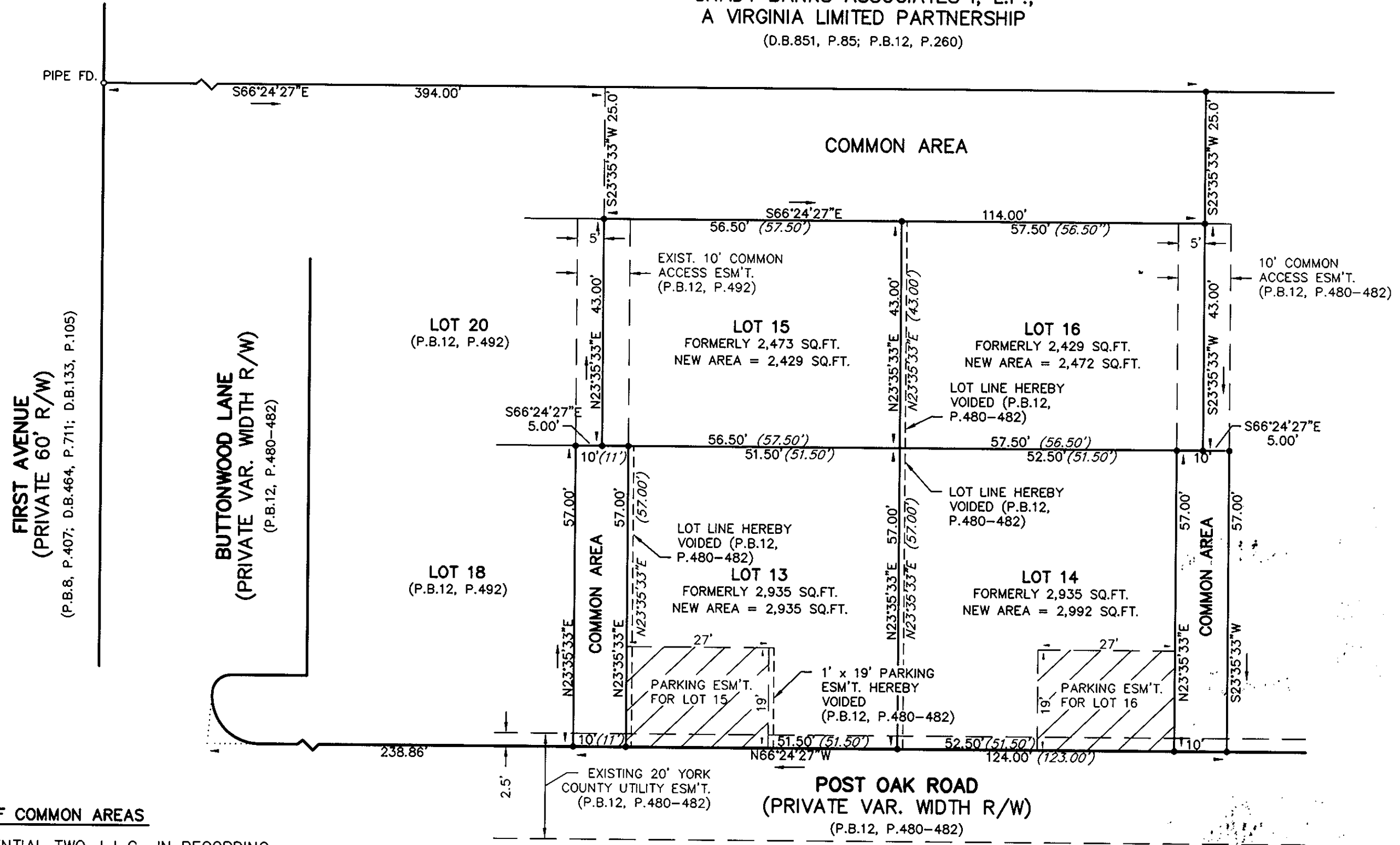
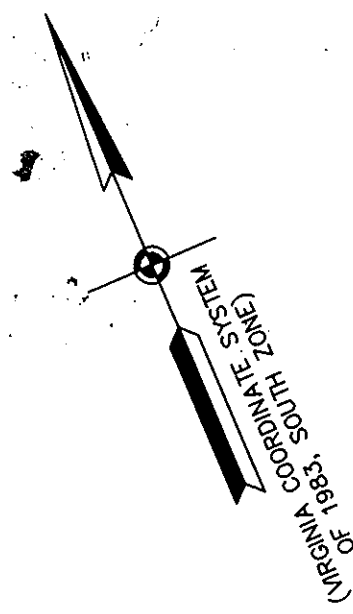
SCALE: 1" = 20' JULY 18, 1997

SHEET 2 OF 2



NOTE: THIS PROPERTY LIES IN ZONE X, (WHITE), AREAS DETERMINED TO BE OUTSIDE 500-YEAR FLOOD PLAIN AS SHOWN ON FLOOD INSURANCE RATE MAP FOR YORK COUNTY, VIRGINIA, COMM. NO. 510182 0043B, 12/16/88.

PARCEL D
 NOW OR FORMERLY
SHADY BANKS ASSOCIATES I, L.P.,
 A VIRGINIA LIMITED PARTNERSHIP
 (D.B.851, P.85; P.B.12, P.260)



REMAINING PORTION PARCEL B-2
 NOW OR FORMERLY
TERRY/PETERSON RESIDENTIAL TWO, L.L.C.,
 A VIRGINIA LIMITED LIABILITY COMPANY
 (D.B. 895, P.289; P.B.12, P.371)
 (48,011 SQ.FT.)

DEDICATION OF COMMON AREAS

TERRY/PETERSON RESIDENTIAL TWO, L.L.C., IN RECORDING THIS PLAT OF THE GABLES OF YORK COUNTY, SECTION ONE, HAS DESIGNATED CERTAIN AREAS AS COMMON AREA, PARKING, ETC., INTENDED FOR USE BY THE HOMEOWNERS IN THE GABLES OF YORK COUNTY FOR RECREATION AND OTHER RELATED ACTIVITIES.

THE DESIGNATED AREAS ARE NOT DEDICATED HEREBY FOR USE BY THE GENERAL PUBLIC, BUT ARE DEDICATED TO THE COMMON USE AND ENJOYMENT OF THE HOMEOWNERS IN THE GABLES OF YORK COUNTY.

NOTE: ALL PRIVATE DRAINAGE EASEMENTS ARE TO BE DEDICATED TO THE GABLES OF YORK COUNTY COMMUNITY ASSOCIATION, INC.

REVISED AREAS FOR SECTION ONE:
 AREA WITHIN LOTS = 53,640 SQ.FT. OR 1.231 ACRES
 AREA WITHIN COMMON AREA = 71,038 SQ.FT. OR 1.631 ACRES
 RIGHT-OF-WAY AREA = 115,065 SQ.FT. OR 2.641 ACRES
 TOTAL SUBDIVIDED AREA = 239,743 SQ.FT. OR 5.503 ACRES

APPROVED:
 YORK COUNTY BOARD OF SUPERVISORS
 BY: [Signature] PE
 PLAT APPROVING AGENT

DATE: 11/13/98

STATE OF VIRGINIA
 COUNTY OF YORK

IN THE CLERK'S OFFICE OF THE CIRCUIT COURT FOR THE COUNTY OF YORK THE 11th DAY OF November 1998, THIS PLAT WAS PRESENTED AND ADMITTED TO RECORD AS THE LAW DIRECTS IN PLAT BOOK 12, PAGE 643.

TESTE: Nancy B. Kane
 CLERK
 BY: [Signature] D.C.

