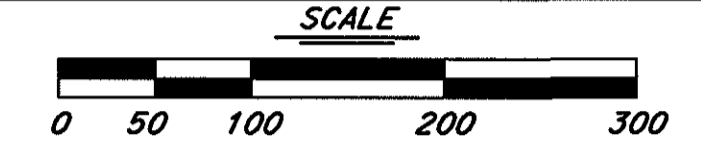


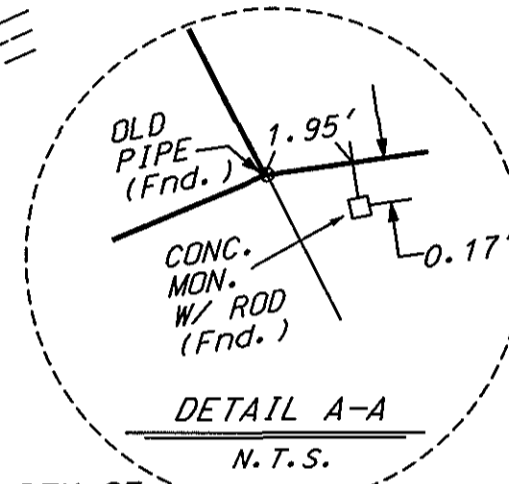
SUBDIVISION OF YORK RIVER COMMERCE PARK PHASE I

SHEET 2 of 2
GRAFTON DISTRICT, YORK COUNTY, VIRGINIA
DATE: 2/24/99 SCALE: 1" = 100' DRAWN: CAD

BENGTSON, DeBELL & ELKIN, LTD.
 808 MOOREFIELD PARK DRIVE, SUITE 220
 RICHMOND, VA 23236
 PHONE: (804) 320-2667
 CONSULTING ENGINEERS • SURVEYORS • PLANNERS • LANDSCAPE ARCHITECTS

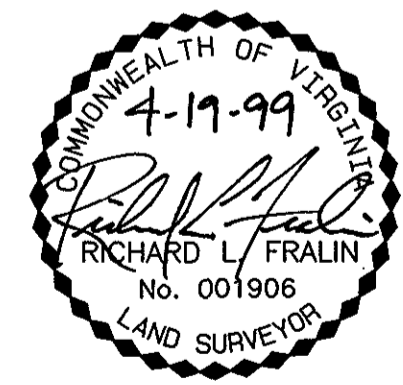


J.N. RC00019700
J.N. RC02099700
J.N. 22668



REMAINING PROPERTY OF VIRGINIA ELECTRIC AND POWER CO.
PART OF T.M. #24-204
D.B. 342, PG. 586
ZONED IG
147± AC.

COUNTY OF YORK
T.M. #24-181
D.B. 369, PG. 462
ZONED IG



APPROVED:
 YORK COUNTY BOARD OF SUPERVISORS
 BY: Don Thomas, PE, PLAT APPROVING AGENT
 DATE: 6/10/99
 STATE OF VIRGINIA
 COUNTY OF YORK
 IN THE CLERK'S OFFICE OF THE CIRCUIT COURT FOR THE COUNTY OF YORK THE 11th DAY OF June, 1999.
 THIS MAP WAS PRESENTED AND ADMITTED TO RECORD AS THE LAW DIRECTS.
 PLAT BOOK 13, PAGE 4
 TESTE: Nancy B. Kane, CLERK
 BY: Kristen N. Nelson, D.C.

LEGEND:
 ○ - ROD TO BE SET, UNLESS OTHERWISE NOTED.
 □ - CONCRETE MONUMENT TO BE SET, UNLESS OTHERWISE NOTED.

NEW R HEREBY ESTABLISHED BY AGREEMENT BETWEEN VEP&CO & THE COUNTY OF YORK

NOTE: THIS 0.517 AC. STRIP OF LAND IS HEREBY QUITCLAIMED BY VIRGINIA ELECTRIC AND POWER CO. TO THE COUNTY OF YORK.

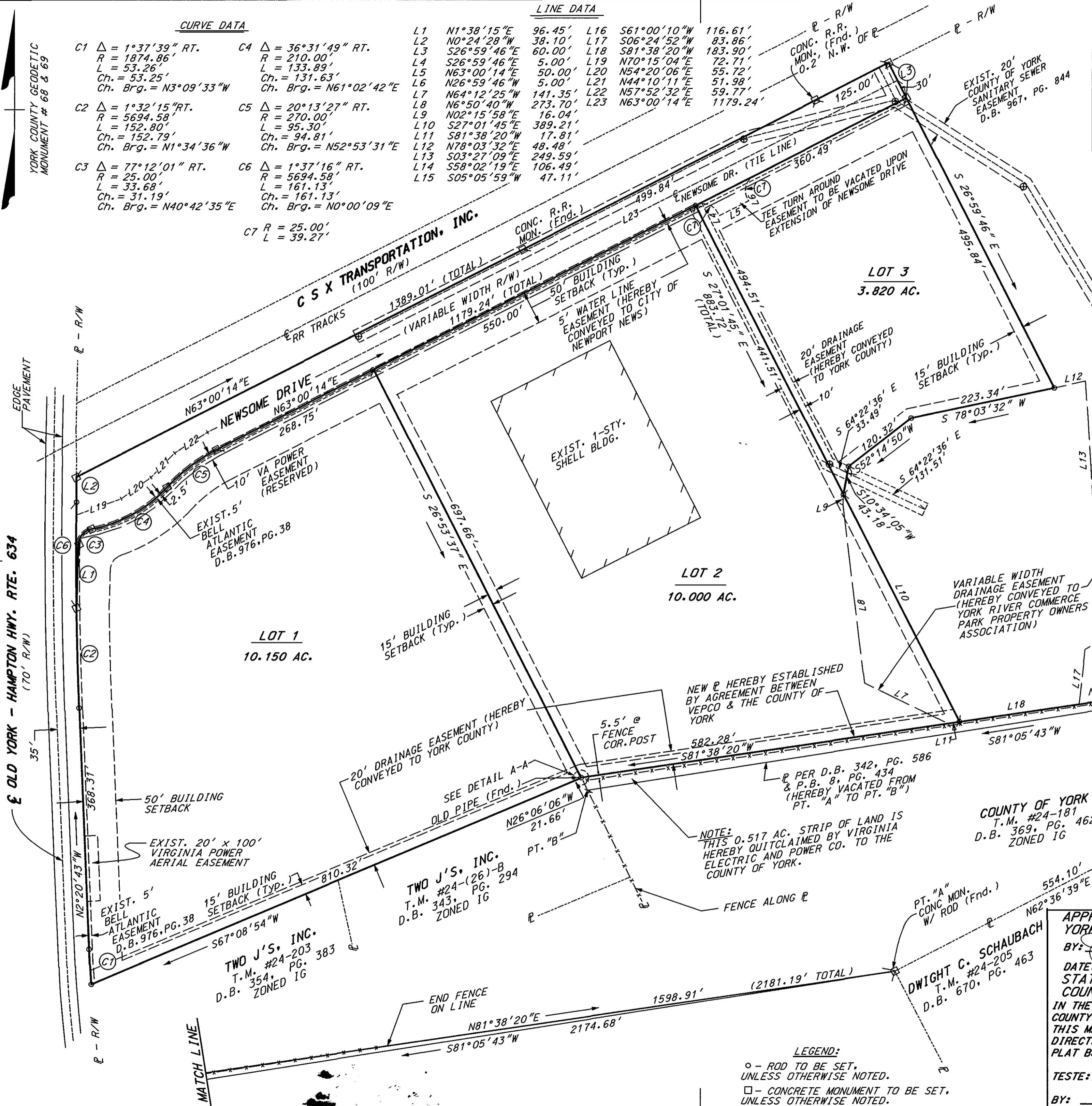
TWO J'S, INC.
T.M. #24-(26)-B
D.B. 343, PG. 294
ZONED IG

TWO J'S, INC.
T.M. #24-203
D.B. 354, PG. 383
ZONED IG

LINE DATA					
L1	N1°38'15"E	96.45'	L16	S61°00'10"W	116.61'
L2	N0°24'28"W	38.10'	L17	S06°24'52"W	83.86'
L3	S26°59'46"E	60.00'	L18	S81°38'20"W	183.90'
L4	S26°59'46"E	5.00'	L19	N70°15'04"E	72.71'
L5	N63°00'14"E	50.00'	L20	N54°20'06"E	55.72'
L6	N26°59'46"W	5.00'	L21	N44°10'11"E	51.98'
L7	N64°12'25"W	141.35'	L22	N57°52'32"E	59.77'
L8	N6°50'40"W	273.70'	L23	N63°00'14"E	1179.24'
L9	N02°15'58"E	16.04'			
L10	S27°01'45"E	389.21'			
L11	S81°38'20"W	17.81'			
L12	N78°03'32"E	48.48'			
L13	S03°27'09"E	249.59'			
L14	S58°02'19"E	106.49'			
L15	S05°05'59"W	47.11'			

CURVE DATA

- C1 Δ = 1°37'39" RT.
R = 1874.86'
L = 53.26'
Ch. = 53.25'
Ch. Brg. = N3°09'33"W
- C2 Δ = 1°32'15" RT.
R = 5694.58'
L = 152.80'
Ch. = 152.79'
Ch. Brg. = N1°34'36"W
- C3 Δ = 77°12'01" RT.
R = 25.00'
L = 33.68'
Ch. = 31.19'
Ch. Brg. = N40°42'35"E
- C4 Δ = 36°31'49" RT.
R = 210.00'
L = 133.89'
Ch. = 131.63'
Ch. Brg. = N61°02'42"E
- C5 Δ = 20°13'27" RT.
R = 270.00'
L = 95.30'
Ch. = 94.81'
Ch. Brg. = N52°53'31"E
- C6 Δ = 1°37'16" RT.
R = 5694.58'
L = 161.13'
Ch. = 161.13'
Ch. Brg. = N0°00'09"E
- C7 R = 25.00'
L = 39.27'



OLD YORK - HAMPTON HWY. RTE. 634
(70' R/W)

YORK COUNTY GEODETIC MONUMENT # 68 & 69

MATCH LINE

MATCH LINE