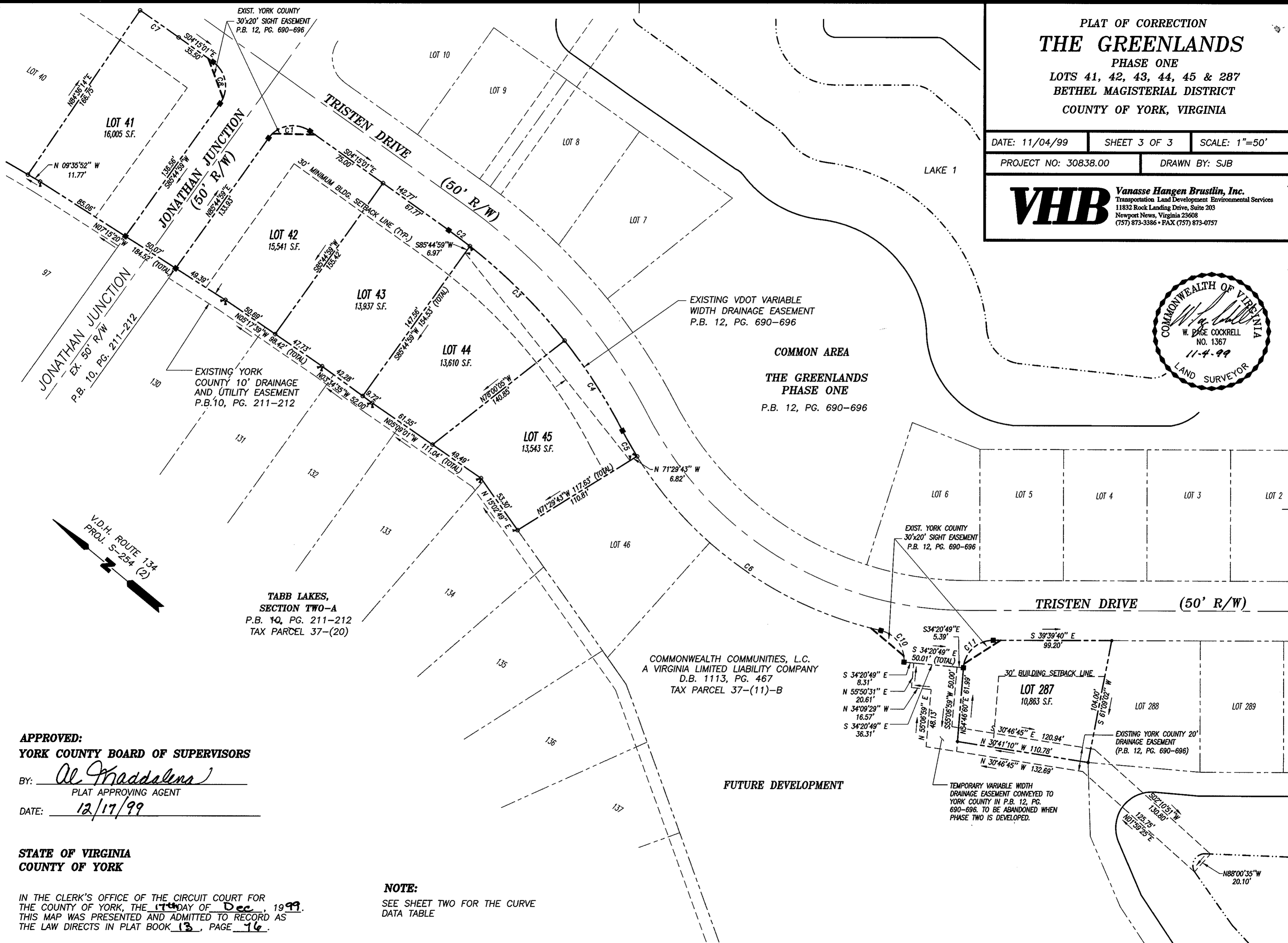


PLAT OF CORRECTION
THE GREENLANDS
 PHASE ONE
 LOTS 41, 42, 43, 44, 45 & 287
 BETHEL MAGISTERIAL DISTRICT
 COUNTY OF YORK, VIRGINIA

DATE: 11/04/99 SHEET 3 OF 3 SCALE: 1"=50'
 PROJECT NO: 30838.00 DRAWN BY: SJB

VHB Vanasse Hangen Brustlin, Inc.
 Transportation Land Development Environmental Services
 11832 Rock Landing Drive, Suite 203
 Newport News, Virginia 23608
 (757) 873-3386 • FAX (757) 873-0757



APPROVED:
YORK COUNTY BOARD OF SUPERVISORS
 BY: Al Maddalena
 PLAT APPROVING AGENT
 DATE: 12/17/99

STATE OF VIRGINIA
COUNTY OF YORK
 IN THE CLERK'S OFFICE OF THE CIRCUIT COURT FOR
 THE COUNTY OF YORK, THE 17th DAY OF Dec, 1999.
 THIS MAP WAS PRESENTED AND ADMITTED TO RECORD AS
 THE LAW DIRECTS IN PLAT BOOK 13, PAGE 76.

TESTE: NANCY B. Kane
 CLERK
 BY: Dunde S. Hughes D.C.

NOTE:
 SEE SHEET TWO FOR THE CURVE
 DATA TABLE

