

SUBDIVISION PLAT OF

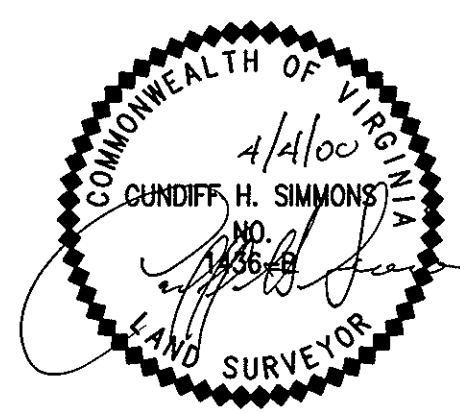
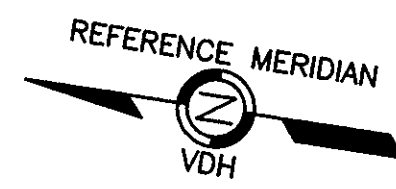
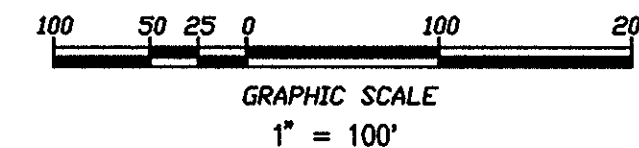
JAMES ALLEN ESTATE

BRUTON DISTRICT - YORK COUNTY, VIRGINIA

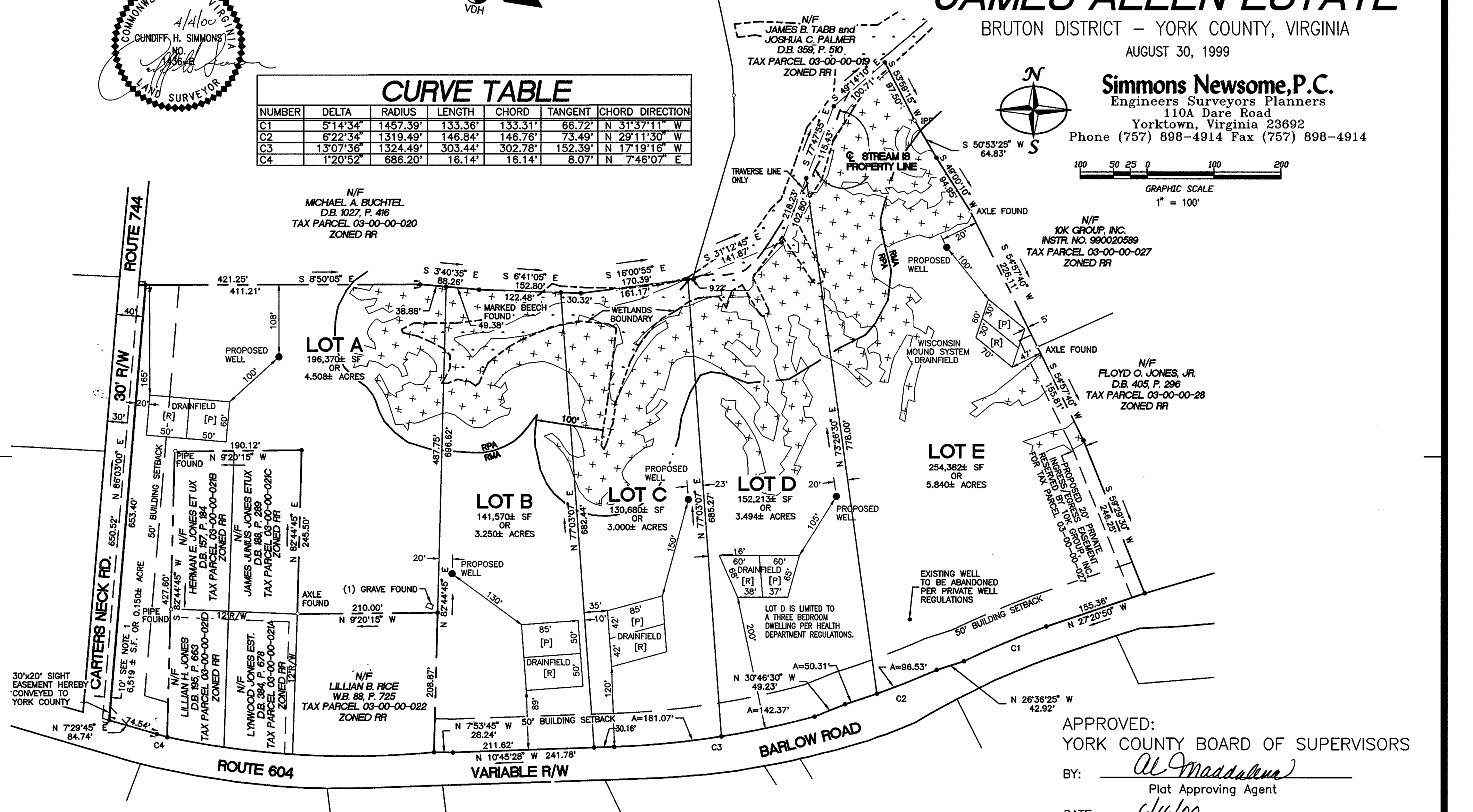
AUGUST 30, 1999

Simmons Newsome, P.C.

Engineers Surveyors Planners
110A Dare Road
Yorktown, Virginia 23692
Phone (757) 898-4914 Fax (757) 898-4914



CURVE TABLE						
NUMBER	DELTA	RADIUS	LENGTH	CHORD	TANGENT	CHORD DIRECTION
C1	5°14'34"	1457.39'	133.36'	133.31'	66.72'	N 31°37'11" W
C2	6°22'34"	1319.49'	146.84'	146.76'	73.49'	N 29°11'30" W
C3	13°07'36"	1324.49'	303.44'	302.78'	152.39'	N 17°19'16" W
C4	1°20'52"	686.20'	16.14'	16.14'	8.07'	N 7°46'07" E



NOTE 1: 10' STRIP HEREBY DEDICATED TO THE COMMONWEALTH OF VIRGINIA, DEPARTMENT OF TRANSPORTATION, FOR RIGHT-OF-WAY PURPOSES.

NOTE 2: ANY RIGHTS THE OWNERS MAY HAVE IN THE EXISTING CARTERS NECK ROAD ARE HEREBY QUIT CLAIMED AND DEDICATED TO THE COMMONWEALTH OF VIRGINIA, DEPARTMENT OF TRANSPORTATION, FOR RIGHT-OF-WAY PURPOSES.

APPROVED:
YORK COUNTY BOARD OF SUPERVISORS
BY: Al Maddalena
Plat Approving Agent
DATE: 6/16/00

STATE OF VIRGINIA
COUNTY OF YORK
In the Clerk's Office of the Circuit Court for the County of York the 23 day of June, 2000 this map was presented and admitted to record as the law directs in PLAT BOOK 13 at PAGE 146

TESTE: LYNN S. JENKINS, CLERK
Clerk
BY: Stacy White, P.C.

SHEET 2 OF 2
97-9-2461
2461\PLAT\PLAT1.DWG