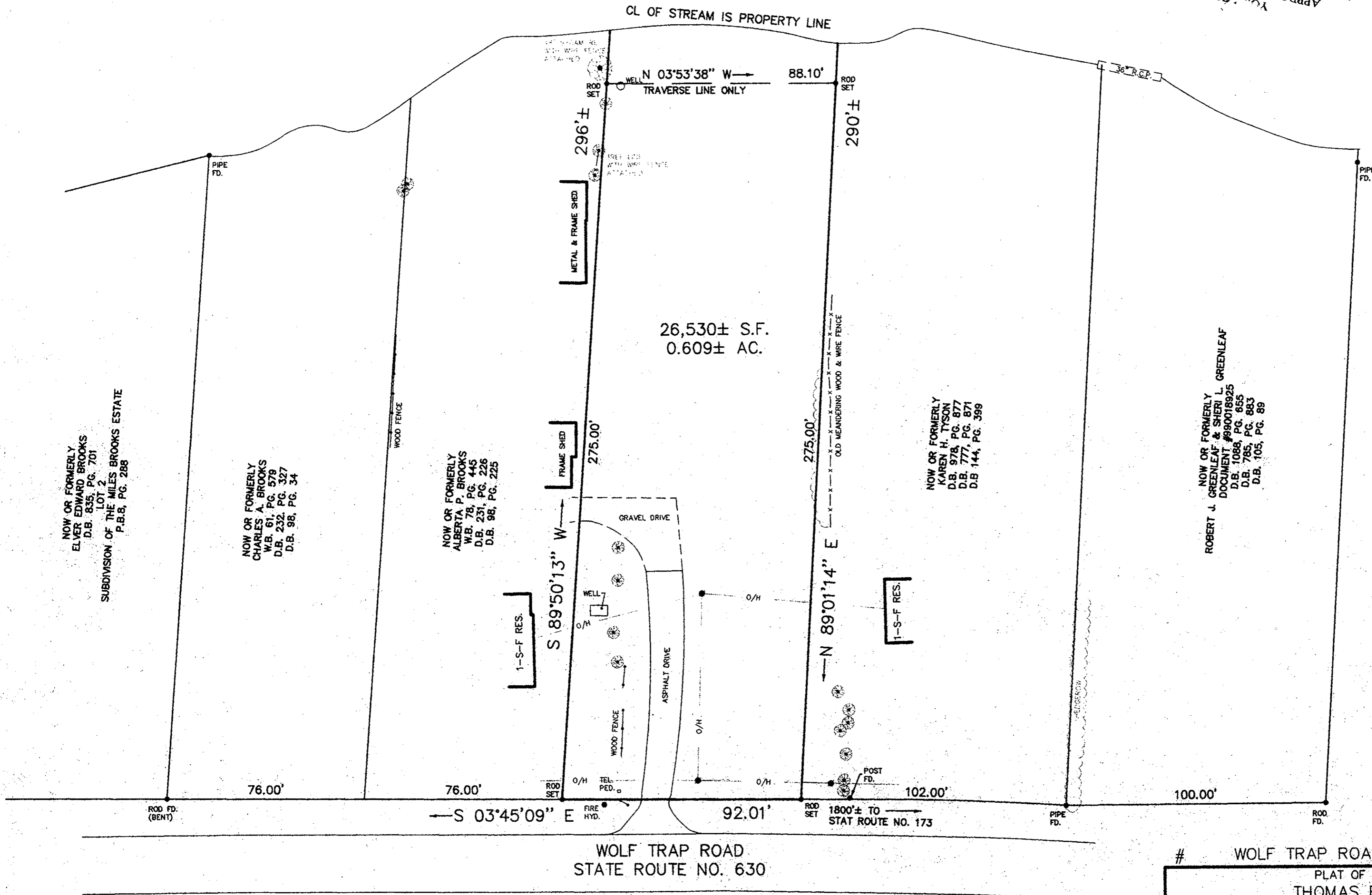


NOW OR FORMERLY
V.E.P.C.O.
P.B. 8, PG. 172

DATE: 11/15/00
TITLE: GIS Supervisor
BY: J.E. Duncan
APPROVED FOR RECORDED
YORK COUNTY



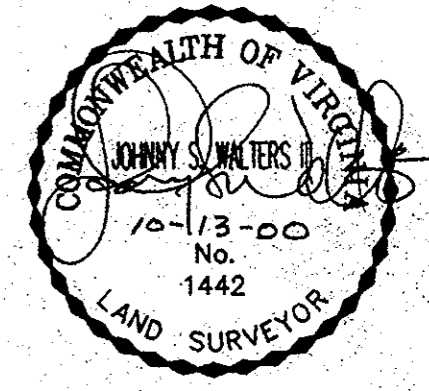
NOW OR FORMERLY
ELVER EDWARD BROOKS
D.B. 835, PG. 701
LOT 2
SUBDIVISION OF THE MILES BROOKS ESTATE
P.B.8, PG. 288

NOW OR FORMERLY
CHARLES A. BROOKS
W.B. 61, PG. 579
D.B. 232, PG. 327
D.B. 98, PG. 34

NOW OR FORMERLY
ALBERTA P. BROOKS
W.B. 78, PG. 445
D.B. 231, PG. 226
D.B. 98, PG. 225

NOW OR FORMERLY
KAREN H. TYSON
D.B. 978, PG. 877
D.B. 777, PG. 871
D.B. 144, PG. 399

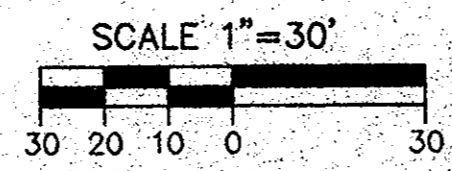
NOW OR FORMERLY
ROBERT J. GREENLEAF & SHERI L. GREENLEAF
DOCUMENT #890018925
D.B. 1088, PG. 655
D.B. 785, PG. 853
D.B. 105, PG. 89



REFERENCES:
D.B. 228, PG. 135
D.B. 94, PG. 447

Filed in the Clerk's Office, Circuit Court, York Co., VA
the 15 day of November, 2000

Teste: Lynn S. Jenkins, Clerk
by Stacy White D.C.



Plat Book No. 13 Page 202

WOLF TRAP ROAD

PLAT OF THE PROPERTY OF
THOMAS BROOKS ESTATE

PARCEL OF LAND CONTAINING
26,530± SQ. FT.
0.609± ACRE
COUNTY OF YORK, VIRGINIA

WALTERS LAND SURVEYING, LTD.
710 DENBIGH BOULEVARD, SUITE 4C
NEWPORT NEWS, VIRGINIA 23608
P.O. BOX 1594 YORKTOWN, VIRGINIA 23692
PHONE: (757)898-1057 FAX: (757)898-2862

DATE: 10-13-2000	JOB # 201159	CLIENT: BROOKS
SCALE: 1"=30'	F.B. 213	Pa. 35
DRAWN BY:		