

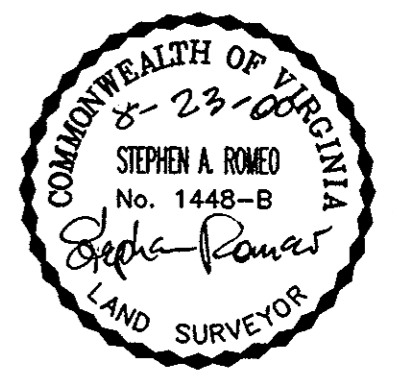
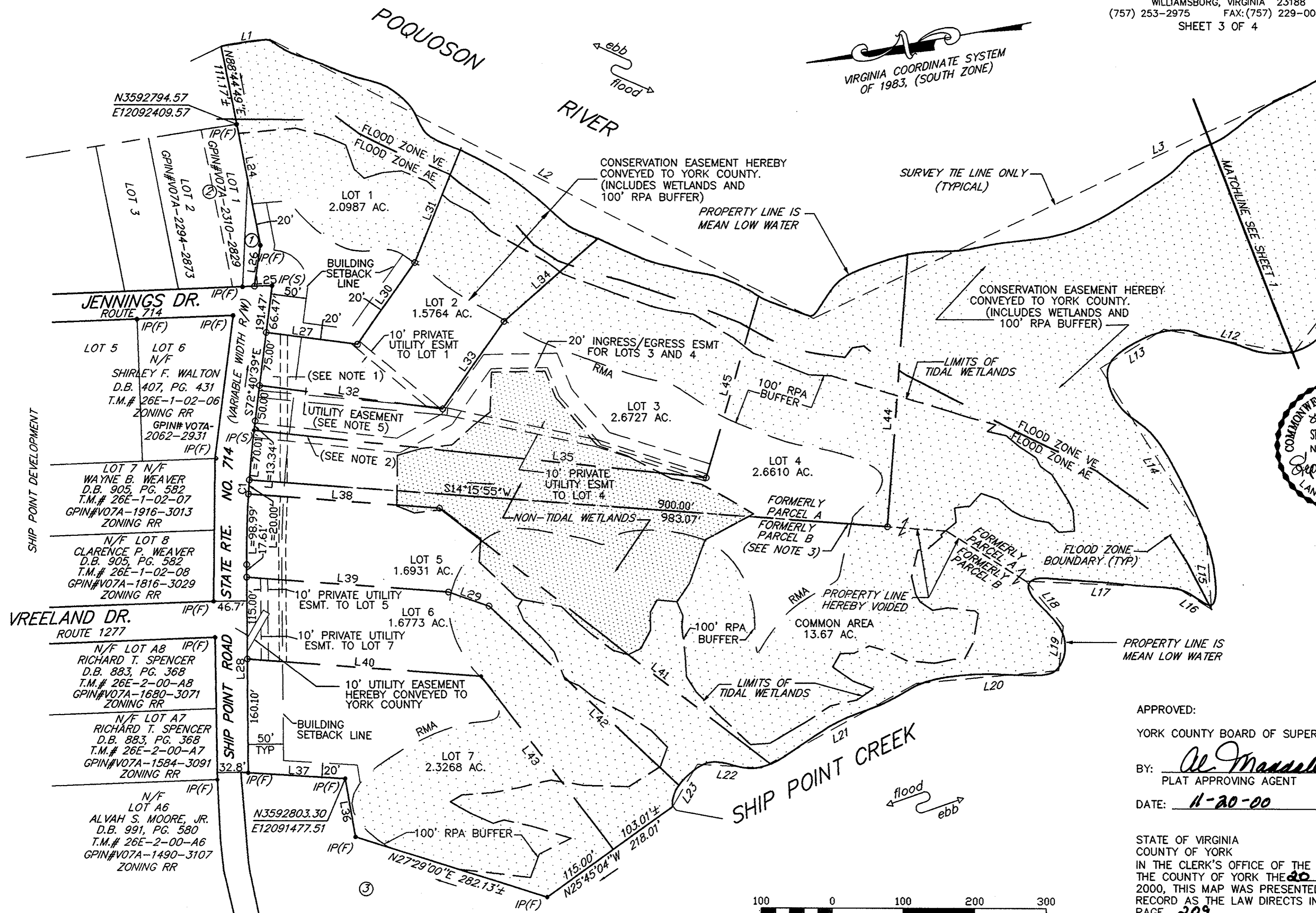
CHESAPEAKE WATCH
 BEING A SUBDIVISION OF
 PROPERTY OF
PAMELA C. PEASLEE HUNTER
 GRAFTON DISTRICT YORK COUNTY, VIRGINIA
 DATE: JUNE 9, 2000 SCALE: 1"=100'

LANDMARK
DESIGN GROUP
 Engineers • Planners • Surveyors
 Landscape Architects • Environmental Consultants
 4029 IRONBOUND ROAD SUITE 100
 WILLIAMSBURG, VIRGINIA 23188
 (757) 253-2975 FAX: (757) 229-0049
 SHEET 3 OF 4

NOW OR FORMERLY
 ① CLARENCE P. & CATHERINE WEAVER
 D.B. 121, PG. 553
 TAX MAP NO. 26E-01-00-001
 P.B. 4, PG. 166
 ZONING RR

NOW OR FORMERLY
 ③ HAROLD E. SMITH, JR. ET UX
 D.B. 392, PG. 281
 P.B. 9, PG. 455
 TAX MAP NO. 26-05-00-000C2
 GPIN#V07A-1213-2675
 ZONING RR

NOW OR FORMERLY
 ② CLARENCE P. WEAVER, ET UX
 D.B. 70, PG. 437
 TAX MAP NO. 26E-01-00-001
 P.B. 4, PG. 166
 ZONING RR



APPROVED:
 YORK COUNTY BOARD OF SUPERVISORS
 BY: *Al Maddalena*
 PLAT APPROVING AGENT
 DATE: 11-20-00

STATE OF VIRGINIA
 COUNTY OF YORK
 IN THE CLERK'S OFFICE OF THE CIRCUIT COURT FOR
 THE COUNTY OF YORK THE 20 DAY OF Nov
 2000, THIS MAP WAS PRESENTED AND ADMITTED TO
 RECORD AS THE LAW DIRECTS IN PLAT BOOK 13
 PAGE 209

TESTE: *Lynn S. Jenkins*
 CLERK
 BY: *Stacy White D.C.*

