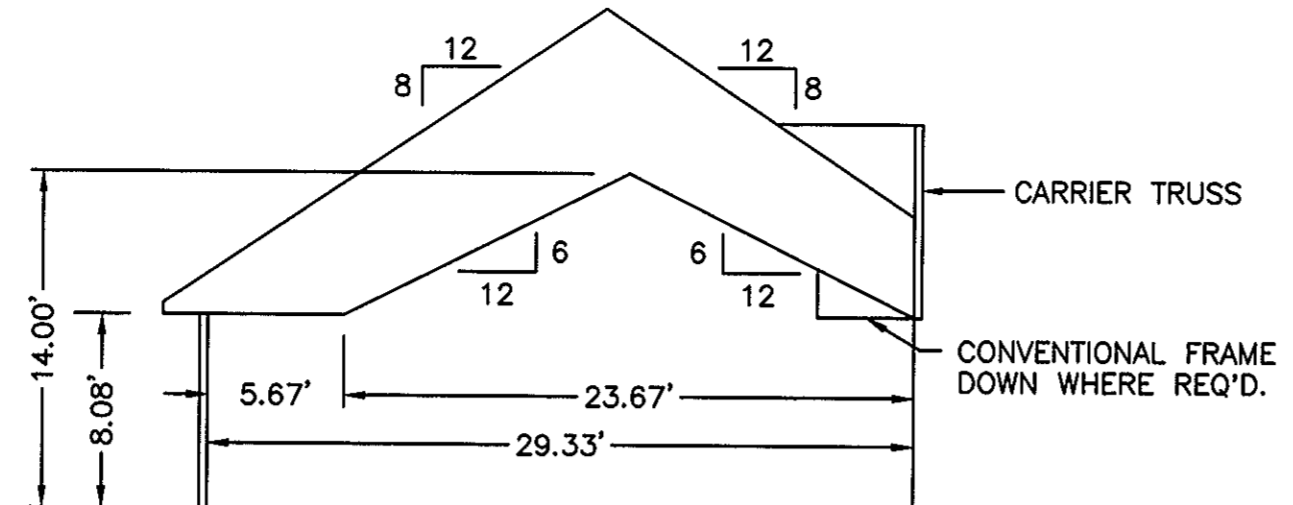
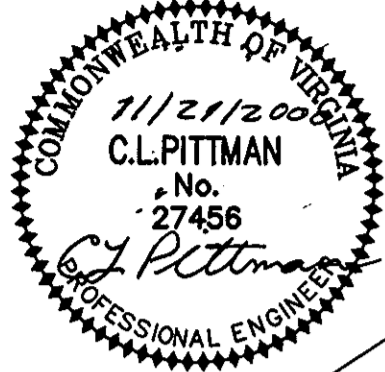
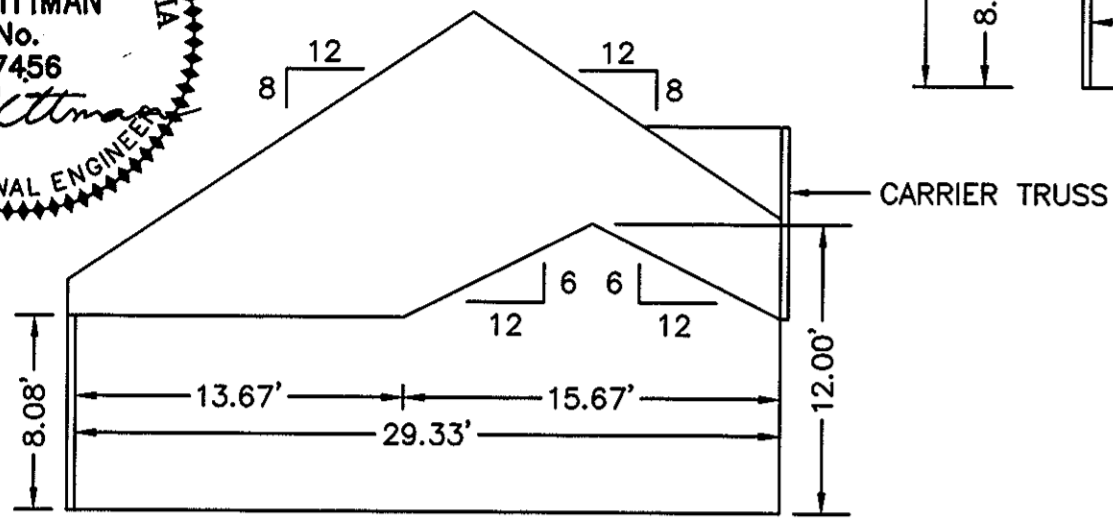


THE UNDERSIGNED CERTIFIES THAT THIS PLAN IS ACCURATE AND COMPLIES WITH THE PROVISIONS OF THE CODE OF VIRGINIA SECTION 55-79.58 (b) AND ALL UNITS DEPICTED HEREON HAVE BEEN SUBSTANTIALLY COMPLETED.

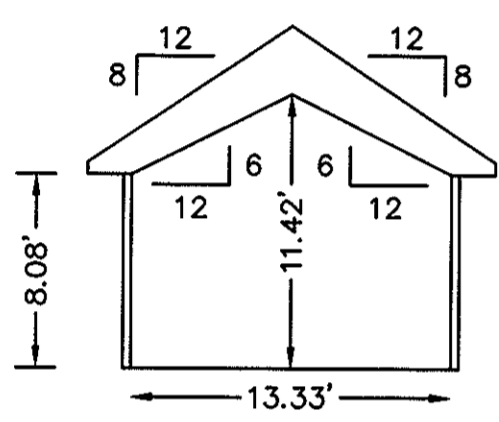
SIGNED: C.L. Pittman DATE: 11/21/2000  
C.L. PITTMAN, P.E.



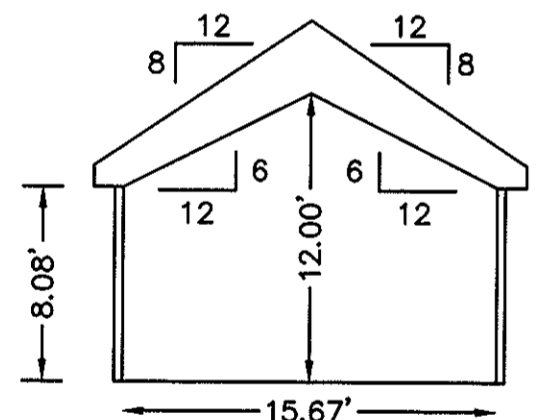
SECTION F-F



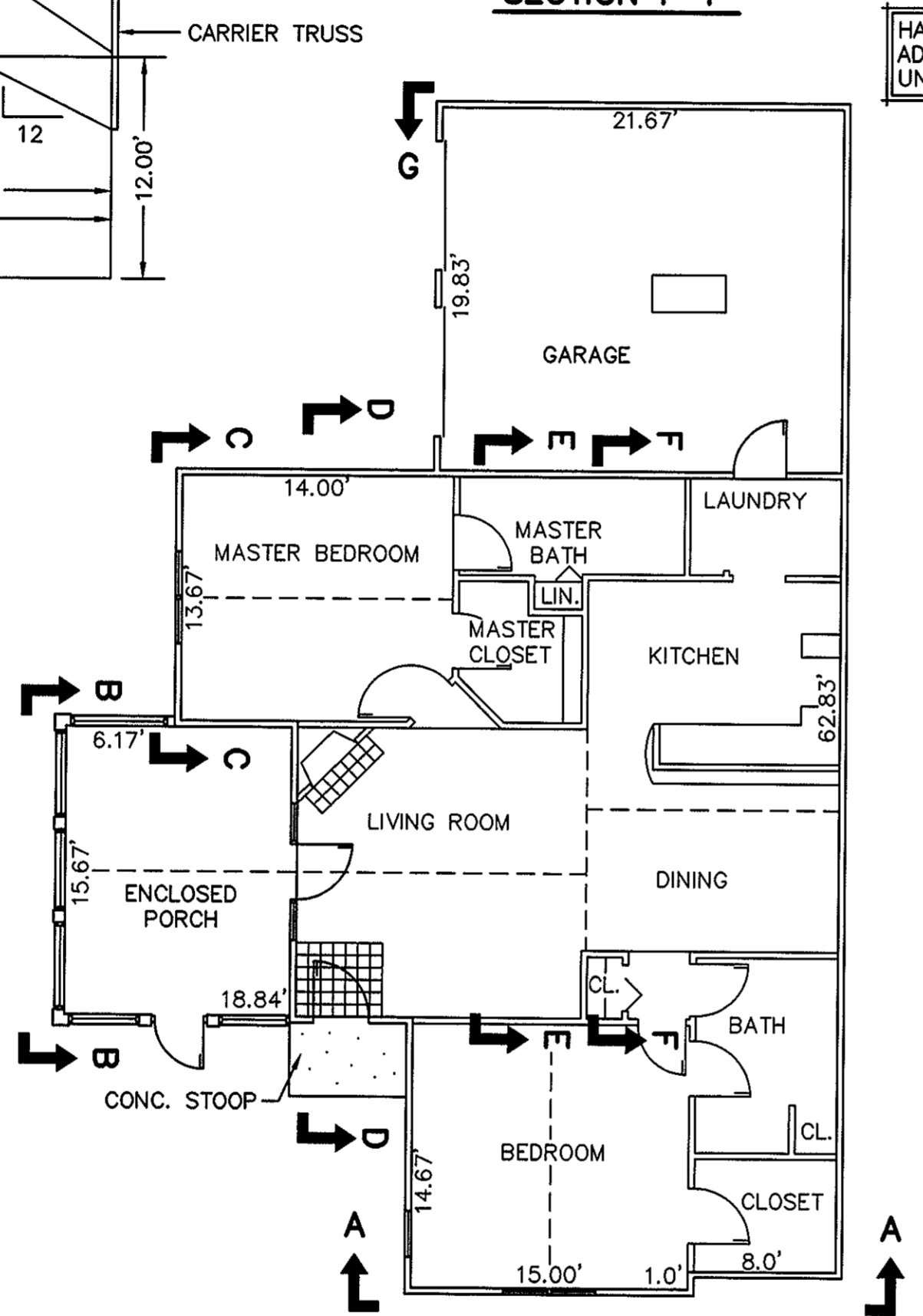
SECTION E-E



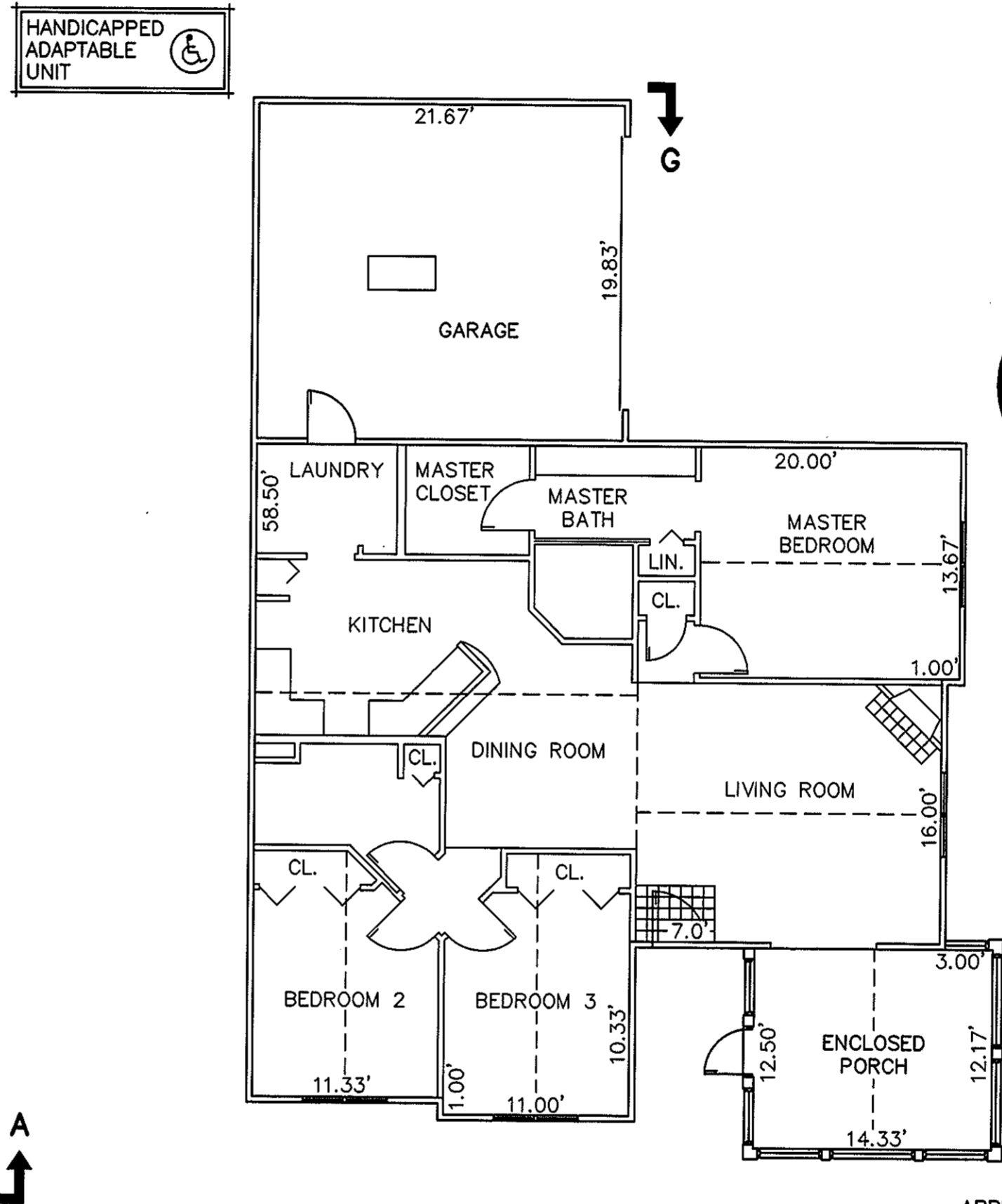
SECTION C-C



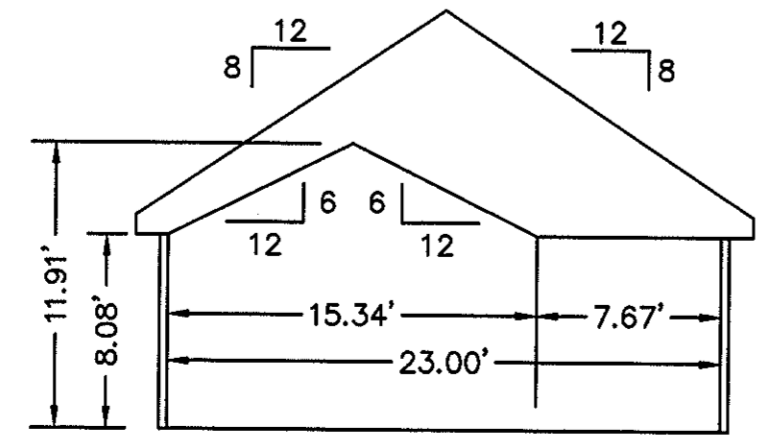
SECTION B-B ENCLOSED PORCH



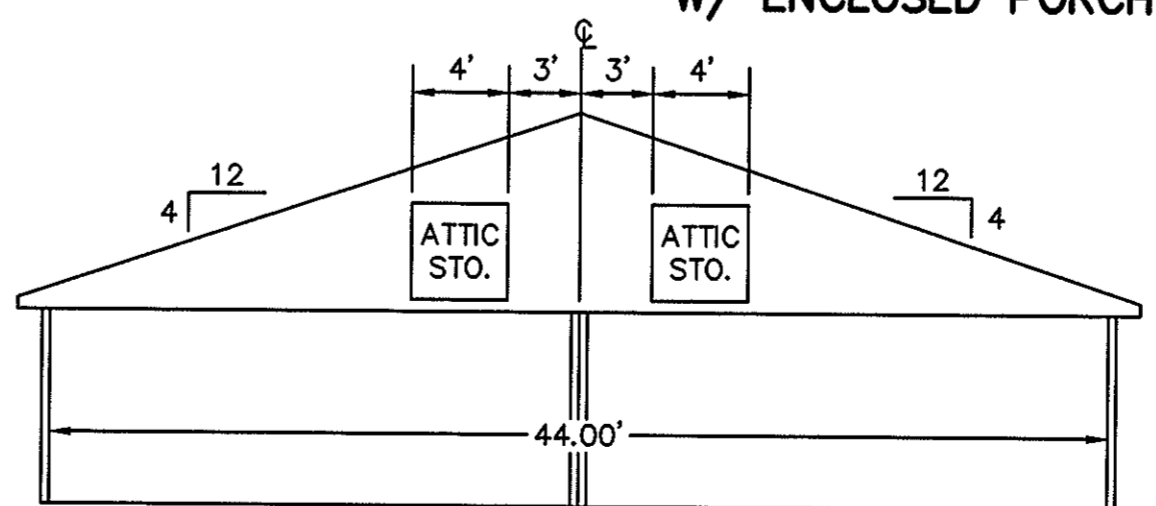
BUILDING 3-1 & 3-3 - ABBEY  
FLOOR PLAN  
W/ ENCLOSED PORCH



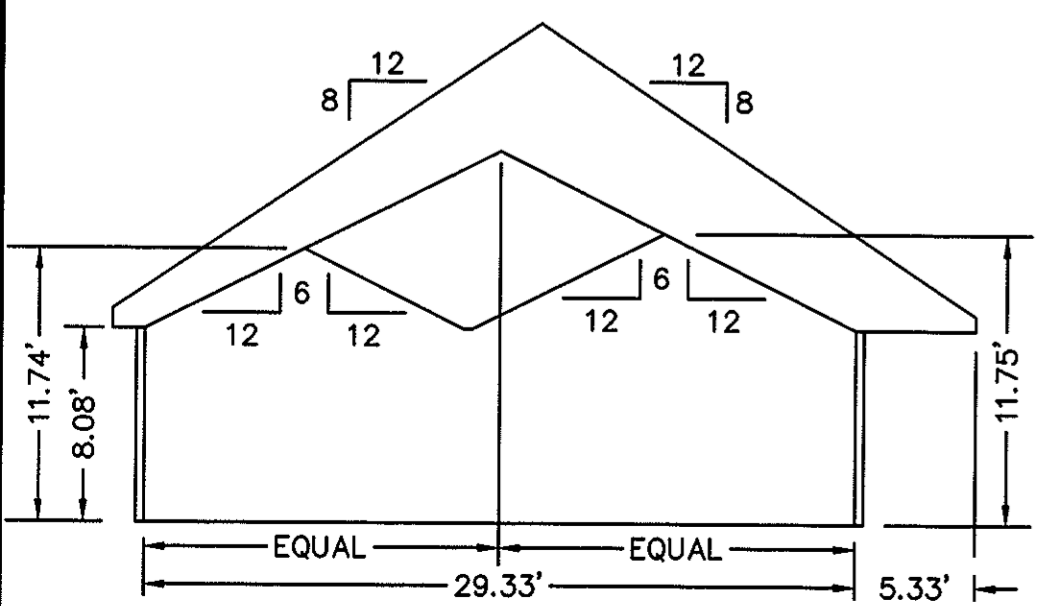
BUILDING 3-2 & 3-4 - CANTERBURY  
FLOOR PLAN  
W/ ENCLOSED PORCH



SECTION A-A



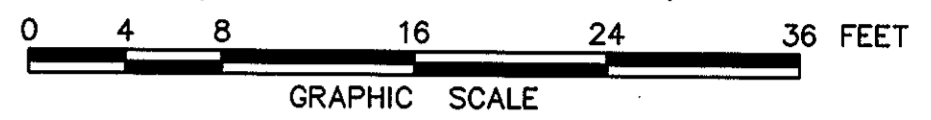
SECTION G-G GARAGE



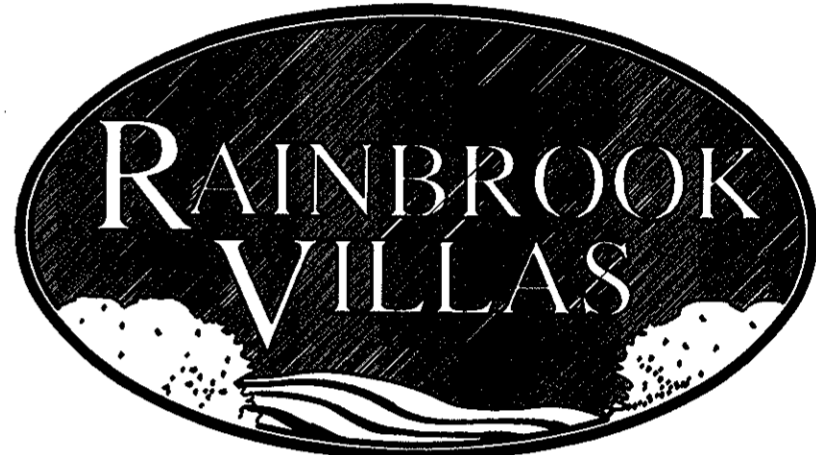
SECTION D-D

EXHIBIT "D"  
PLAT OF  
RAINBROOK VILLAS  
A CONDOMINIUM  
PHASE III  
SHEET 3 OF 4

GRAFTON DISTRICT - COUNTY OF YORK, VIRGINIA  
SCALE: 1/8" = 1'-0" NOVEMBER 20, 2000



THE SIRINE GROUP, LTD.  
SURVEYORS • ENGINEERS • PLANNERS  
4794 GEORGE WASHINGTON MEMORIAL HIGHWAY  
U.S. ROUTE 17  
P.O. BOX 450  
WHITE MARSH, VIRGINIA 23183



APPROVED:  
YORK COUNTY BOARD OF SUPERVISORS

BY: Al Maddalena

DATE: 11/27/00

NOTES:  
1. ALL BUILDING DIMENSIONS SHOWN HEREON ARE INTERIOR DIMENSIONS AND ARE IN FEET.

STATE OF VIRGINIA  
COUNTY OF YORK

IN THE CLERK'S OFFICE OF THE CIRCUIT COURT FOR THE COUNTY OF YORK THE 21 DAY OF Nov, 2000, THIS PLAT WAS PRESENTED AND ADMITTED TO RECORD AS THE LAW DIRECTS IN PLAT BOOK 13, PAGE 214.

TESTE: Lynn S. Jenkins  
CLERK

BY: Stacy White D.C.