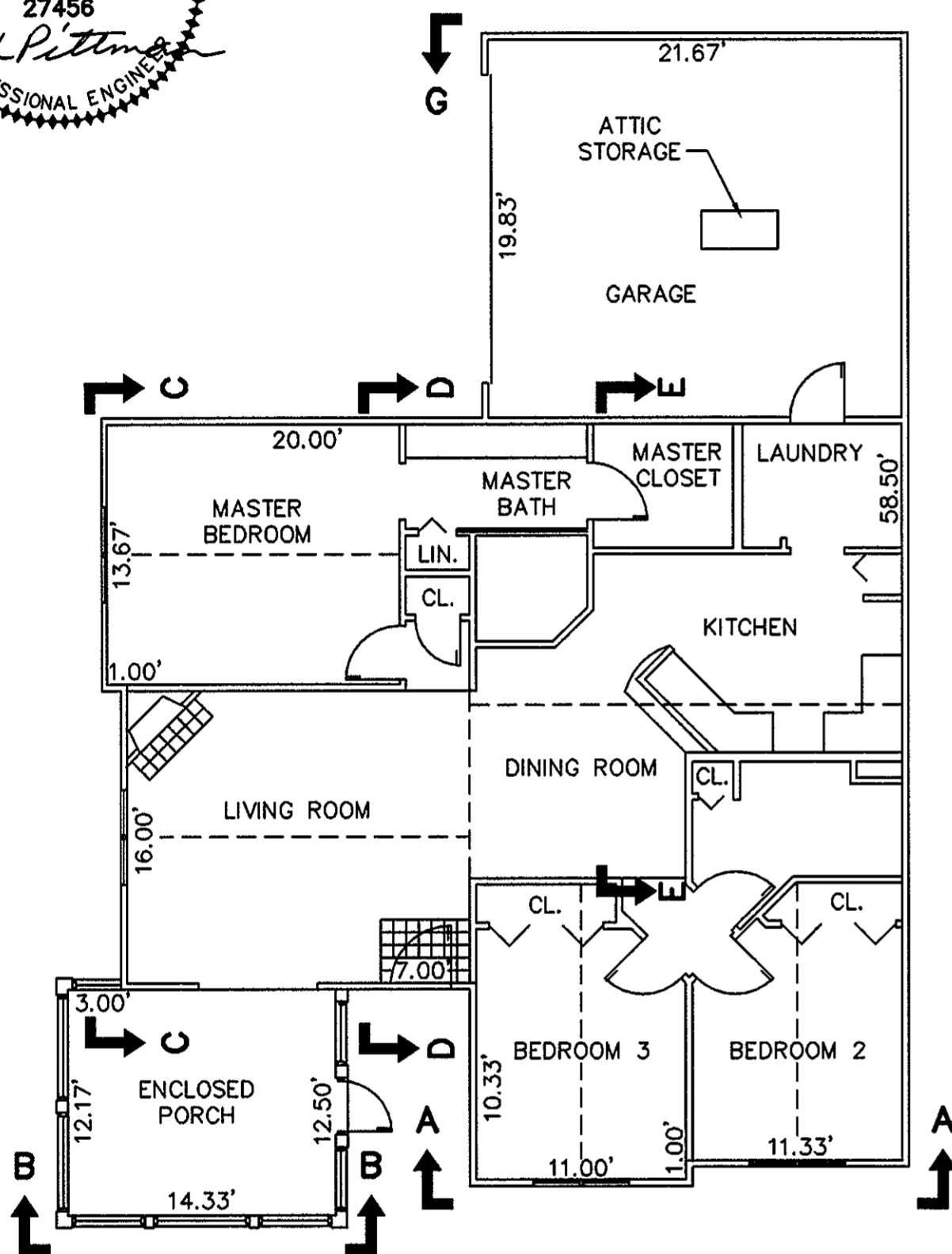
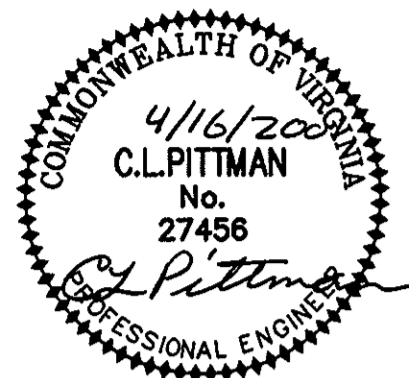
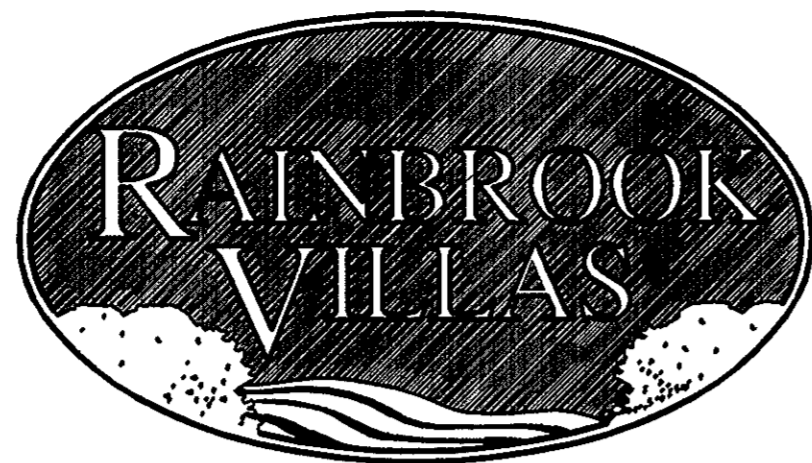
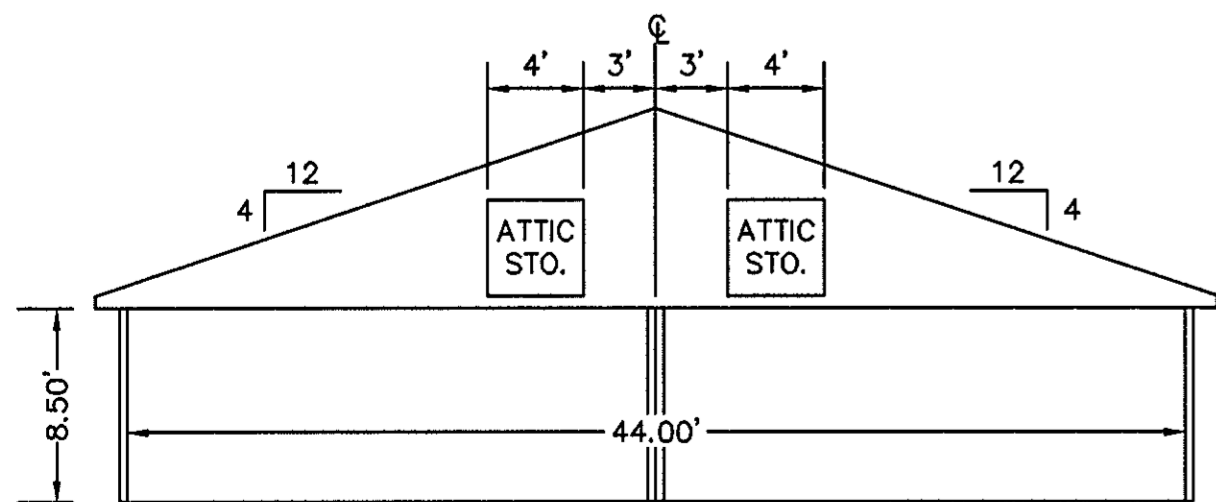


THE UNDERSIGNED CERTIFIES THAT THIS PLAN IS ACCURATE AND COMPLIES WITH THE PROVISIONS OF THE CODE OF VIRGINIA SECTION 55-79.58 (b) AND ALL UNITS DEPICTED HEREON HAVE BEEN SUBSTANTIALLY COMPLETED.

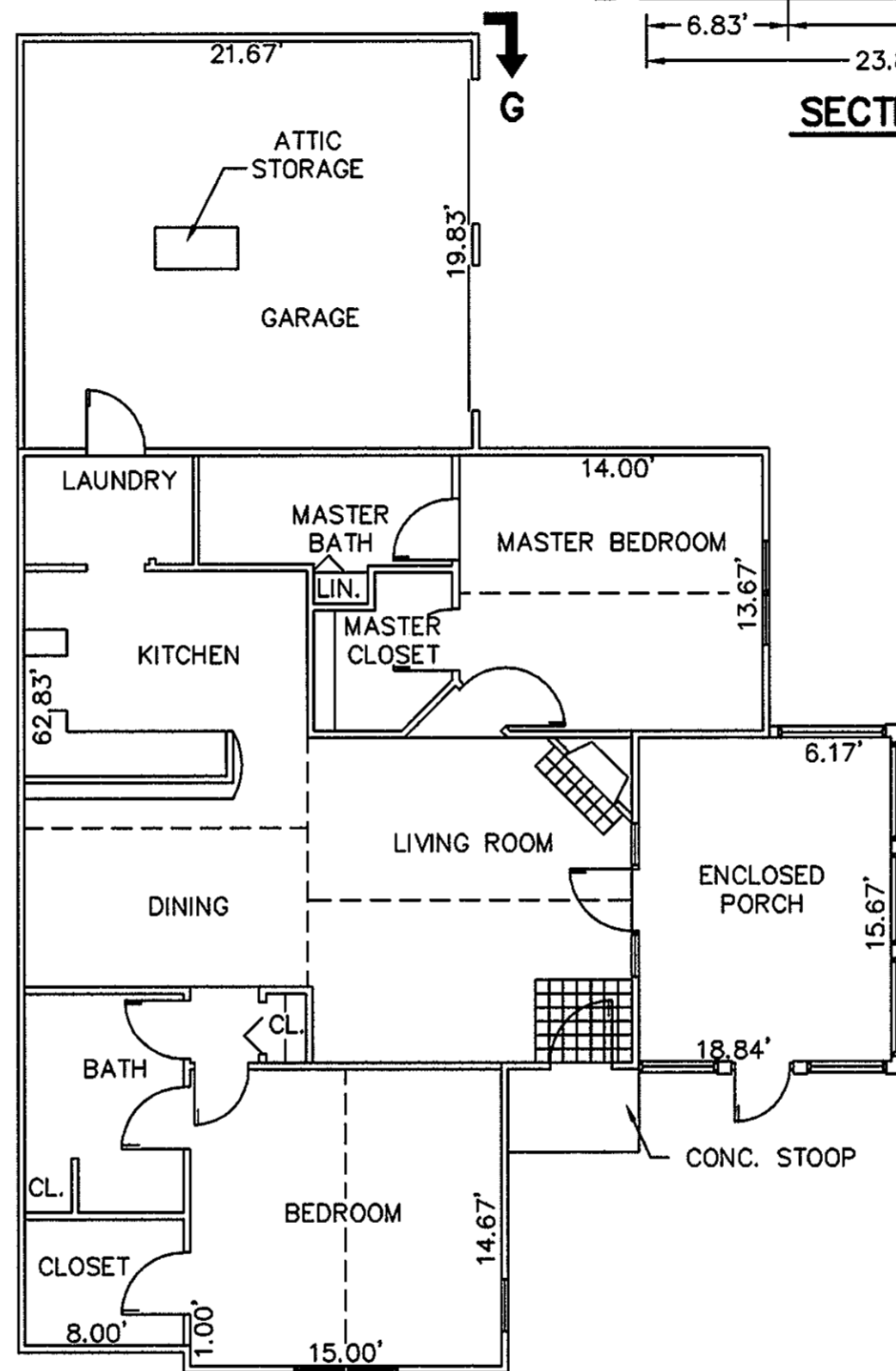
SIGNED: C.L. Pittman DATE: 4/16/2001
C.L. PITTMAN, P.E.



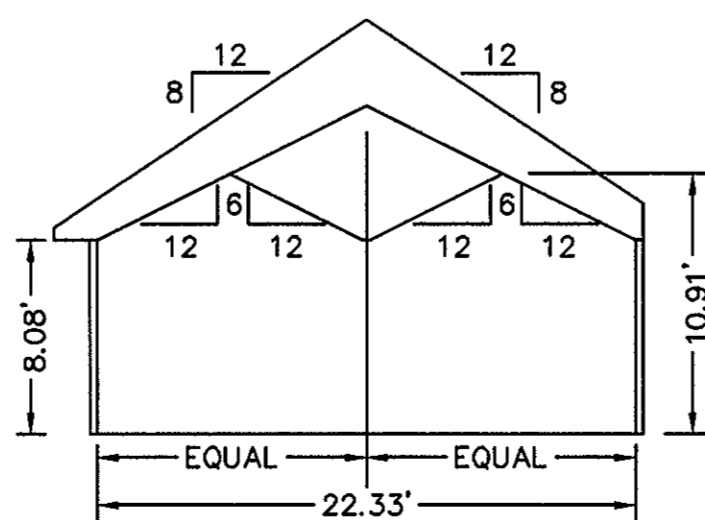
BUILDING 20-1 & 20-3 - CANTERBURY
FLOOR PLAN
W/ ENCLOSED PORCH



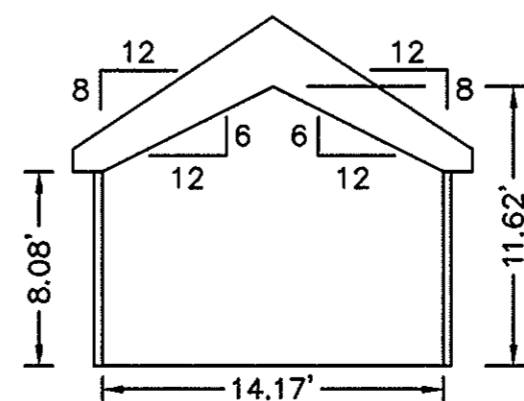
SECTION G-G
GARAGE



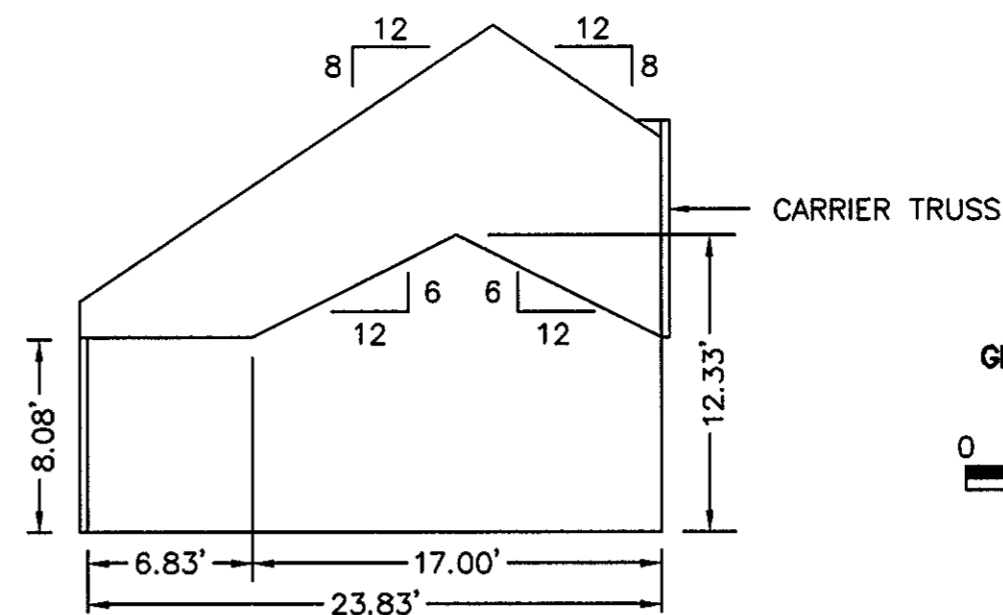
BUILDING 20-2 & 20-4 - ABBEY
FLOOR PLAN
W/ ENCLOSED PORCH



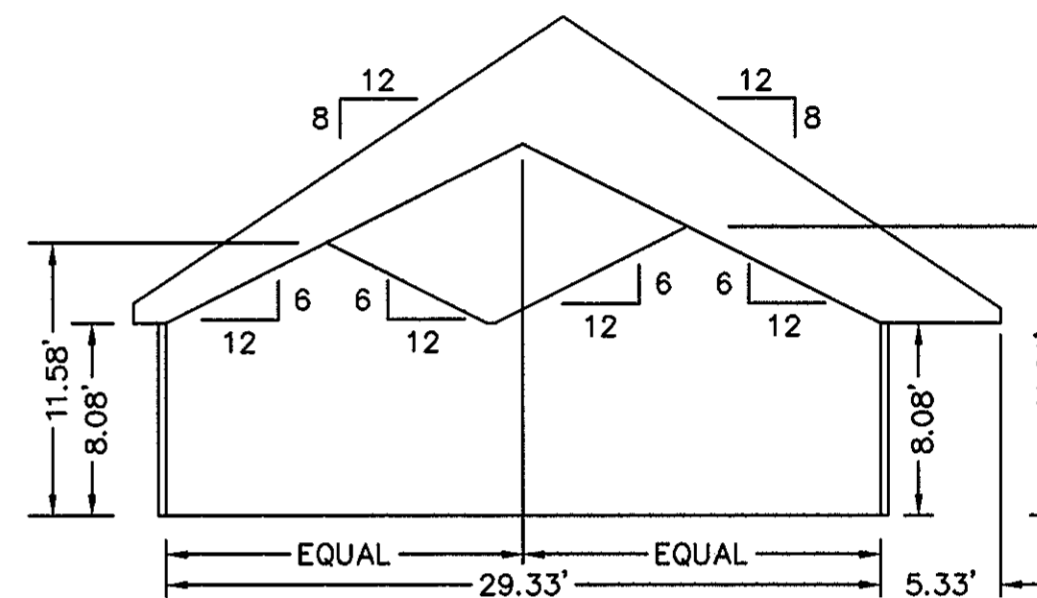
SECTION A-A



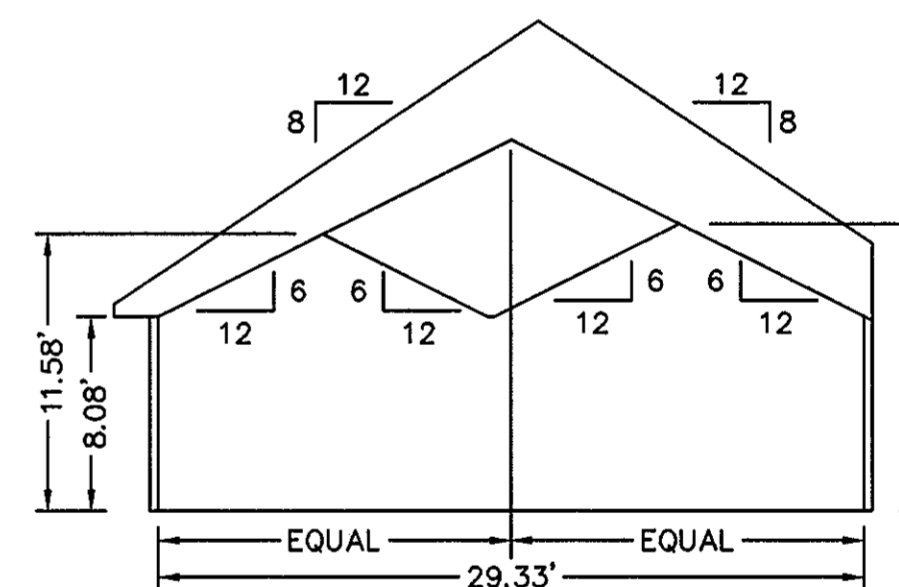
SECTION B-B
ENCLOSED PORCH



SECTION E-E



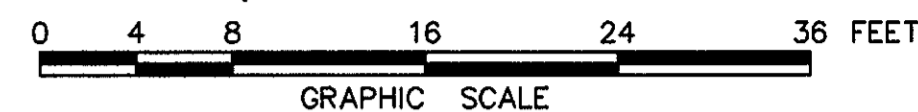
SECTION D-D



SECTION C-C

EXHIBIT "D"
PLAT OF
RAINBROOK VILLAS
A CONDOMINIUM
PHASE VII
SHEET 3 OF 4

GRAFTON DISTRICT - COUNTY OF YORK, VIRGINIA
SCALE: 1/8" = 1'-0" MARCH 15, 2001



THE SIRINE GROUP, LTD.
SURVEYORS • ENGINEERS • PLANNERS
4794 GEORGE WASHINGTON MEMORIAL HIGHWAY
U.S. ROUTE 17
P.O. BOX 450
WHITE MARSH, VIRGINIA 23183

APPROVED:
YORK COUNTY BOARD OF SUPERVISORS

BY: Al Maddalena

DATE: April 16, 2001

NOTES:
1. ALL BUILDING DIMENSIONS SHOWN HEREON ARE INTERIOR DIMENSIONS AND ARE IN FEET.

STATE OF VIRGINIA
COUNTY OF YORK

IN THE CLERK'S OFFICE OF THE CIRCUIT COURT FOR THE COUNTY OF YORK THE 16 DAY OF April, 2001, THIS PLAT WAS PRESENTED AND ADMITTED TO RECORD AS THE LAW DIRECTS IN PLAT BOOK 13, PAGE 281.

TESTE: Lynn S. Jenkins
CLERK

BY: Lupia A. Beris