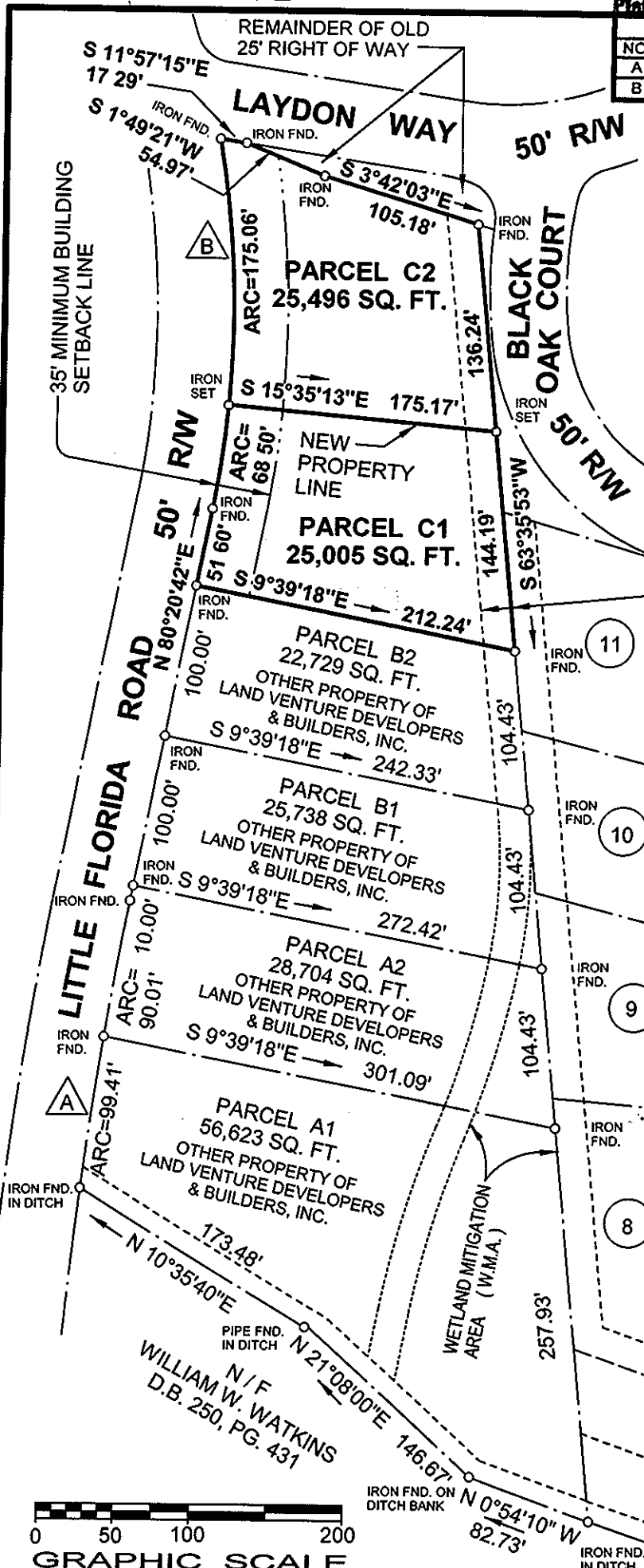


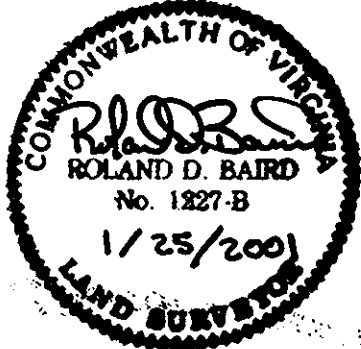
CURVE DATA						
NO.	ARC	RADIUS	TANGENT	DELTA	CHORD	CHORD BEARING
A	189.42'	2839.79'	94.75'	3°49'19"	189.39'	N 78°26'02" E
B	243.56'	661.62'	123.17'	21°05'31"	242.18'	N 69°47'56" E



Filed in the City's Office, Circuit Court, York Co., VA
 the 20 day of April, 2001
 Testes: Lynn S. Jenkins, Clerk
[Signature]

LEGAL REFERENCES
 INSTRUMENT NO. 5142 @ PG. 173
 INSTRUMENT NO. 12983 @ PG. 394

THE HOLLYS
 P.B. 13, PG. 129



PROPERTIES OF
LAND VENTURE DELVELOPERS AND BUILDERS, INC.

PLAT SHOWING
PARCELS C1 & C2
 BEING A DIVISION OF PARCEL C

CITY OF POQUOSON, VIRGINIA

JOHNSON-BAIRD AND ASSOCIATES
 CIVIL ENGINEERING AND LAND SURVEYING
 1538 WEST QUEEN STREET - HAMPTON, VIRGINIA - 23669-3645

SCALE: 1" = 100'
 DATE: JAN. 25, 2001

FILE NO. 99-155W1