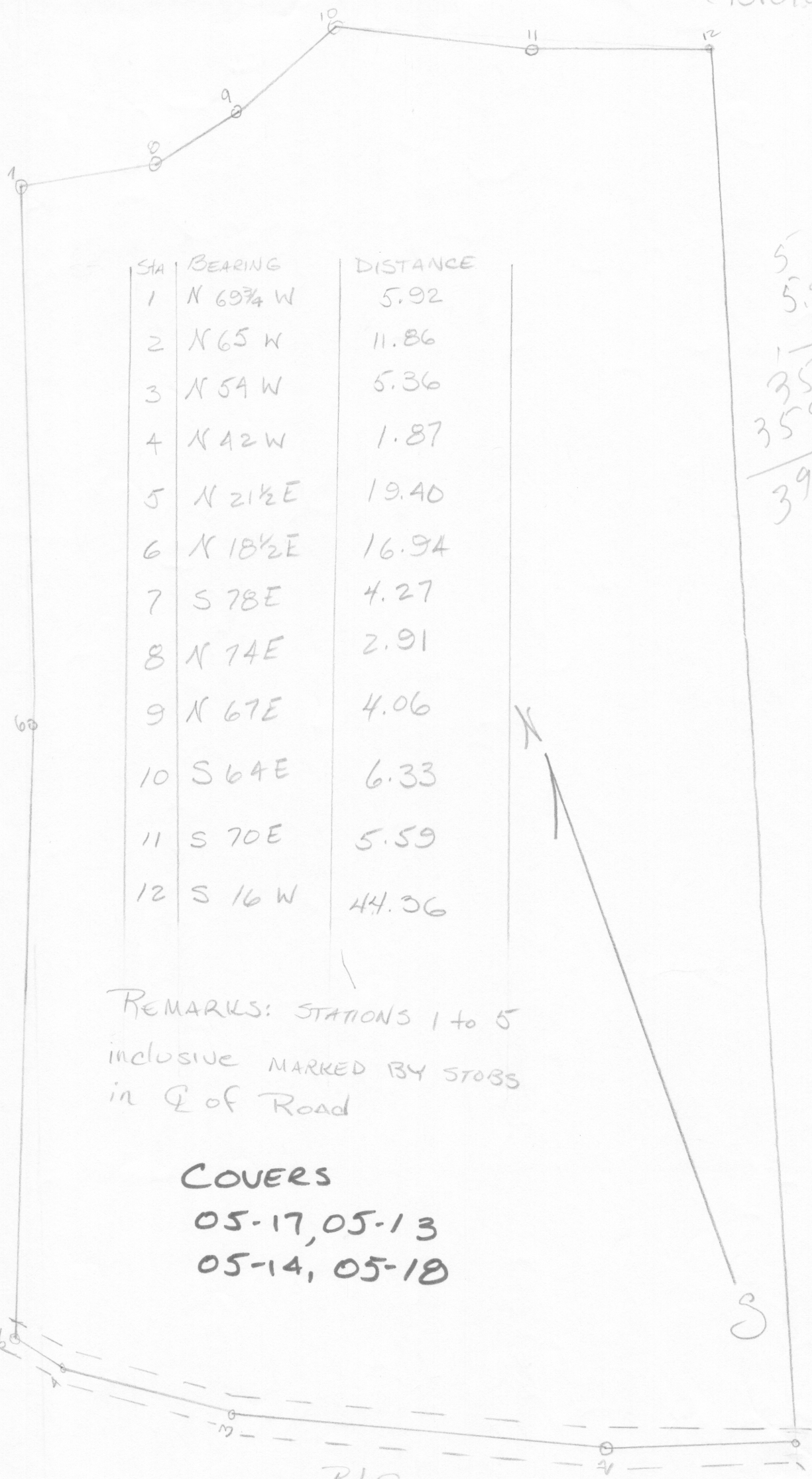


Schenck TRACT  
(BRITON DIS.)



STA	BEARING	DISTANCE
1	N 69 <sup>3</sup> / <sub>4</sub> W	5.92
2	N 65 W	11.86
3	N 54 W	5.36
4	N 42 W	1.87
5	N 21 <sup>1</sup> / <sub>2</sub> E	19.40
6	N 18 <sup>1</sup> / <sub>2</sub> E	16.94
7	S 78 E	4.27
8	N 74 E	2.91
9	N 67 E	4.06
10	S 64 E	6.33
11	S 70 E	5.59
12	S 16 W	44.36

5 1  
5.92  
66  
3552  
3552  
39 0.72

REMARKS: STATIONS 1 to 5  
inclusive MARKED BY STOPS  
in E of Road

**COVERS**  
05-17, 05-13  
05-14, 05-18

Rd from 6 mile ORDINARY  
to Oak Tree (RT 602)

MARCH 13-15  
1901 - Sydney Smith SUR.

Scale 4ch = 1"

Tax Map 2-59 from D.B. 25-268