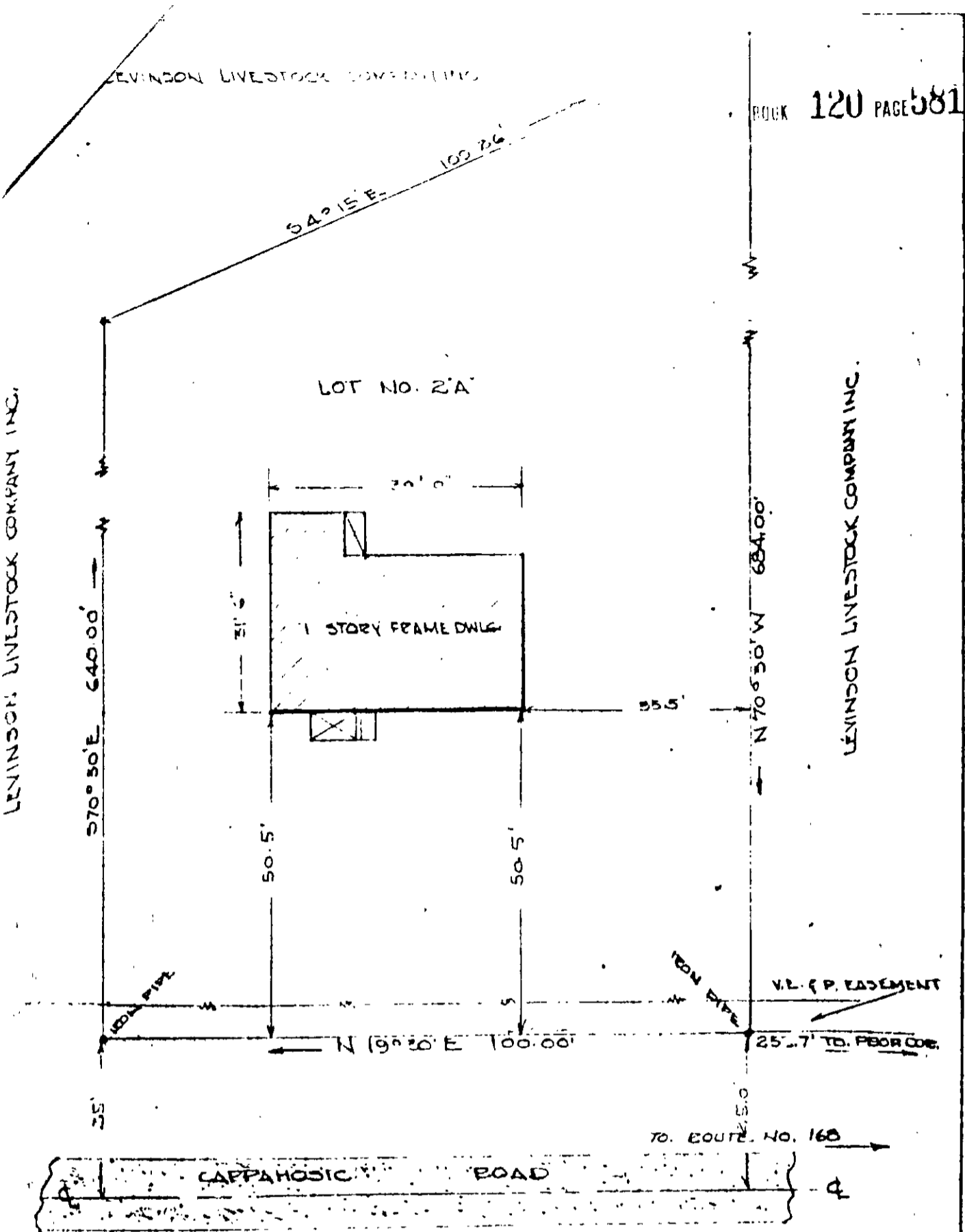


LEVINSON LIVESTOCK COMPANY INC.

LEVINSON LIVESTOCK COMPANY INC.



LEVINSON LIVESTOCK COMPANY INC.  
 "THREE ACRE FARMS"  
 BRATON DISTRICT, YORK COUNTY VA.  
 PLAT SHOWING BOUNDARY SURVEY  
 & LOCATION OF IMPROVEMENTS PARCEL  
 NO. 2-A, DATE 20, 1957 SCALE 1" = 20'

VINCENT D. McMANUS  
 WILLIAMSBURG, VIRGINIA  
 REGISTERED VIRGINIA  
 LAND SURVEYOR AND  
 HIGHWAY ENGINEER  
 CIVIL ENGINEER 1938

NS5013

3B(1)2A