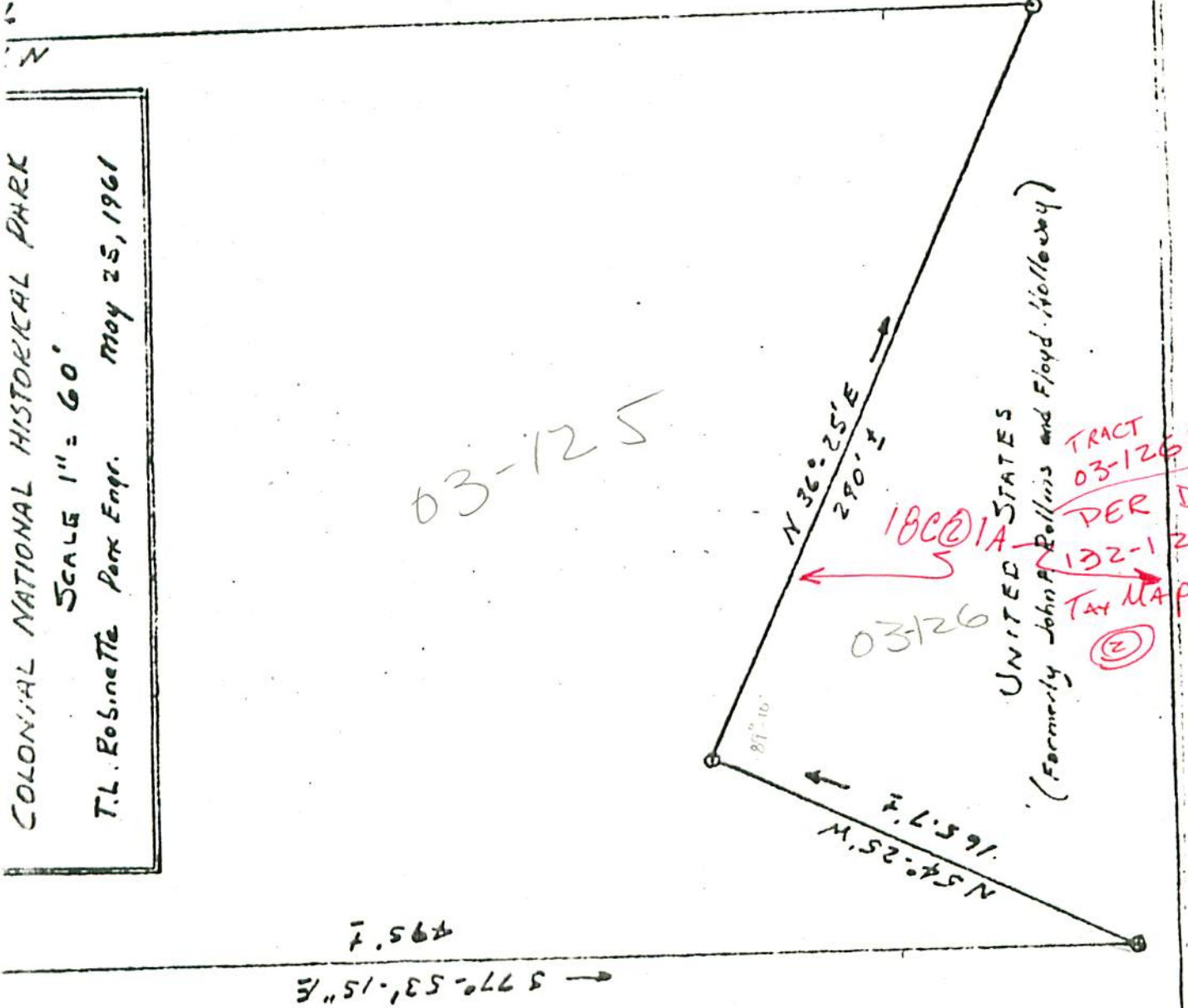


COLONIAL NATIONAL HISTORICAL PARK
SCALE 1" = 60'
T.L. Robins & Co. Park Engr. May 25, 1961

UNITED STATES
(Formerly Yorktown)

03-125



(Formerly Dunwoody Corp)

18C@1A STATES
03-126
TRACT 03-126:
PER DB 132-124?
TAX MAP 18C
1+1A
②

18C(2)1A