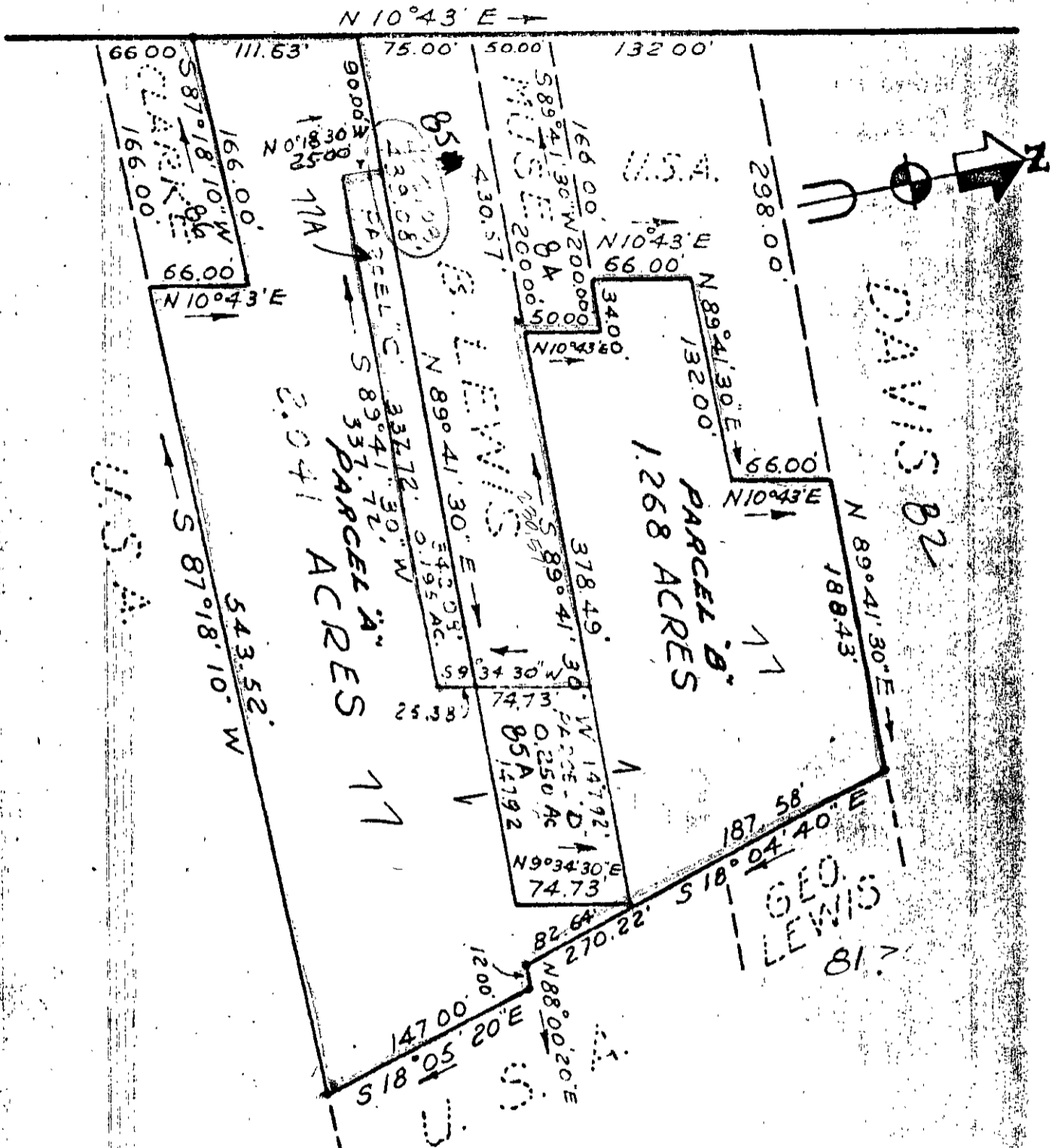


ROUTE 634



MAP OF FOUR PARCELS OF LAND ON THE EAST SIDE OF ROUTE 634, YORK COUNTY, VIRGINIA.

18-77,77A
84, 85, 85A

GEO. TIMMONS
ENGINEER & SURVEYOR
RICHMOND, VA.

SCALE: 1" = 100'

LAZEBROOK

3754